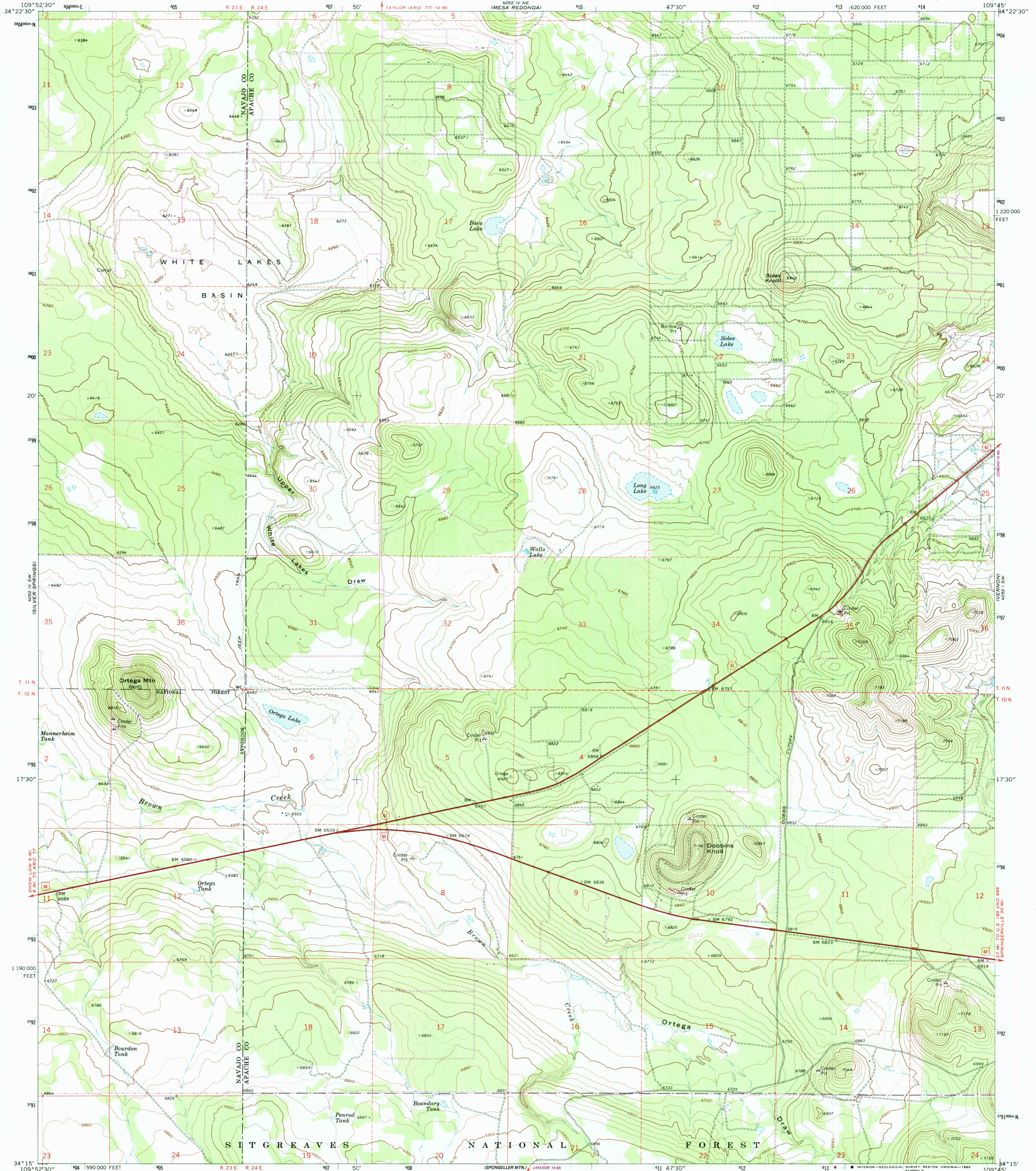


UNITED STATES
DEPARTMENT OF THE INTERIOR
GEOLOGICAL SURVEY

ORTEGA MTN. QUADRANGLE
ARIZONA
7.5 MINUTE SERIES (TOPOGRAPHIC)



Mapped, edited, and published by the Geological Survey
Control by USGS and NOS/NOAA
Topography by photogrammetric methods from aerial photographs taken 1969. Field checked 1971
Projection and 10,000-foot grid ticks: Arizona coordinate system, east zone (transverse Mercator)
1000-meter Universal Transverse Mercator grid ticks, zone 12, shown in blue
1927 North American Datum
To place on the predicted North American Datum 1983 move the projection lines 1 meter south and 59 meters east as shown by dashed corner ticks
Fine red dashed lines indicate selected fence lines
There may be private inclusions within the boundaries of the National or State reservations shown on this map

Revisions shown in purple and woodland compiled from aerial photographs taken 1982 and other sources
This information not field checked. Map edited 1984

SCALE 1:24 000
CONTOUR INTERVAL 20 FEET
DOTTED LINES REPRESENT 10-FOOT CONTOURS
NATIONAL GEODETIC VERTICAL DATUM OF 1929
THIS MAP COMPLIES WITH NATIONAL MAP ACCURACY STANDARDS
FOR SALE BY U. S. GEOLOGICAL SURVEY, DENVER, COLORADO 80225, OR RESTON, VIRGINIA 22092
A FOLDER DESCRIBING TOPOGRAPHIC MAPS AND SYMBOLS IS AVAILABLE ON REQUEST

ROAD CLASSIFICATION
Primary highway, hard surface
Secondary highway, hard surface
Light-duty road, hard or improved surface
Unimproved road
Interstate Route
U. S. Route
State Route
QUADRANGLE LOCATION
ORTEGA MTN., ARIZ.
34109-C7-TF-024
1971
PHOTOREVISED 1984
DMA 4052 IV SE - SERIES 9898