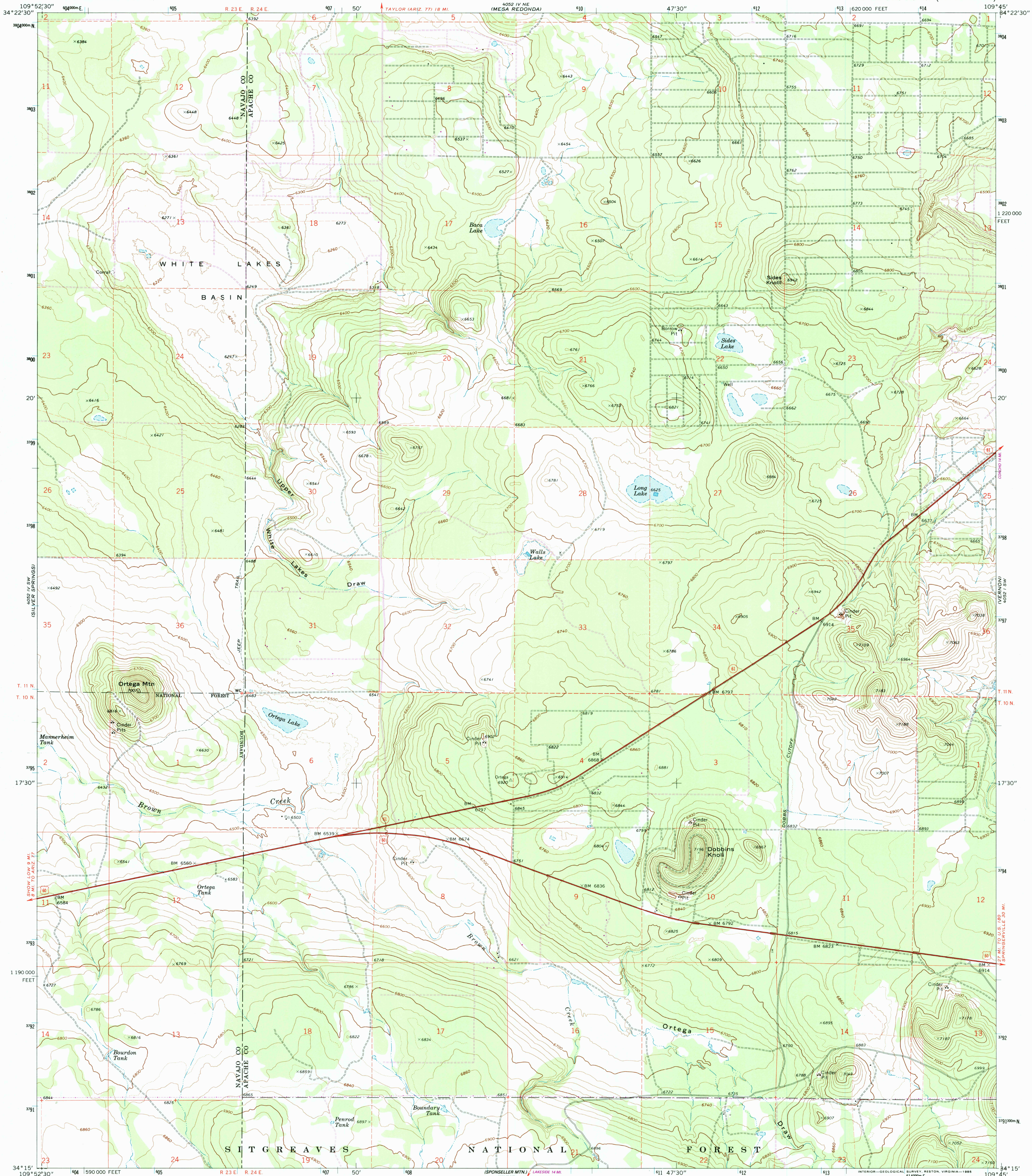


UNITED STATES
DEPARTMENT OF THE INTERIOR
GEOLOGICAL SURVEY

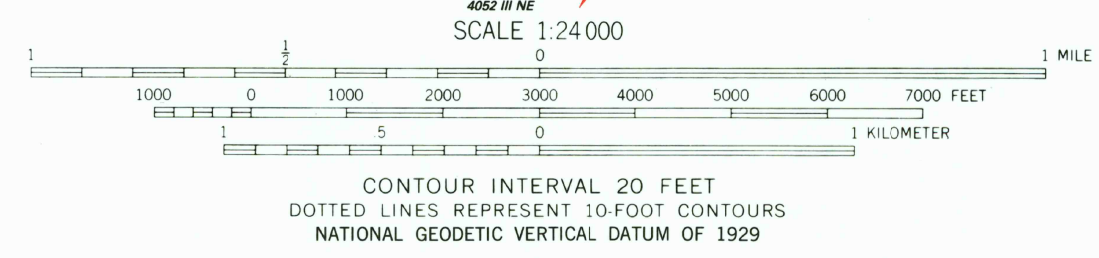
ORTEGA MTN. QUADRANGLE
ARIZONA
7.5 MINUTE SERIES (TOPOGRAPHIC)



Mapped, edited, and published by the Geological Survey

Control by USGS and NOS/NOAA
 Topography by photogrammetric methods from aerial photographs taken 1969. Field checked 1971
 Projection and 10,000-foot grid ticks: Arizona coordinate system, east zone (transverse Mercator)
 1000-meter Universal Transverse Mercator grid ticks, zone 12, shown in blue
 1927 North American Datum
 To place on the predicted North American Datum 1983 move the projection lines 1 meter south and 59 meters east as shown by dashed corner ticks
 Fine red dashed lines indicate selected fence lines
 There may be private inholdings within the boundaries of the National or State reservations shown on this map

Revisions shown in purple and woodland compiled from aerial photographs taken 1982 and other sources
 This information not field checked. Map edited 1984



ROAD CLASSIFICATION

Primary highway, hard surface	Light duty road, hard or improved surface
Secondary highway, hard surface	Unimproved road
Interstate Route	U. S. Route
	State Route

USGS AND HISTORICAL MAP ARCHIVES
 OCT 12 1995
 REC'D FILE COPY

ORTEGA MTN., ARIZ.
 34109-C7-1F-024
 1971
 PHOTOREVISED 1984
 DMA 4052 IV SE - SERIES V988

ISBN 0-607-06983-9
 9 780607 069839

THIS MAP COMPLIES WITH NATIONAL MAP ACCURACY STANDARDS
 FOR SALE BY U. S. GEOLOGICAL SURVEY, DENVER, COLORADO 80225, OR RESTON, VIRGINIA 22092
 A FOLDER DESCRIBING TOPOGRAPHIC MAPS AND SYMBOLS IS AVAILABLE ON REQUEST