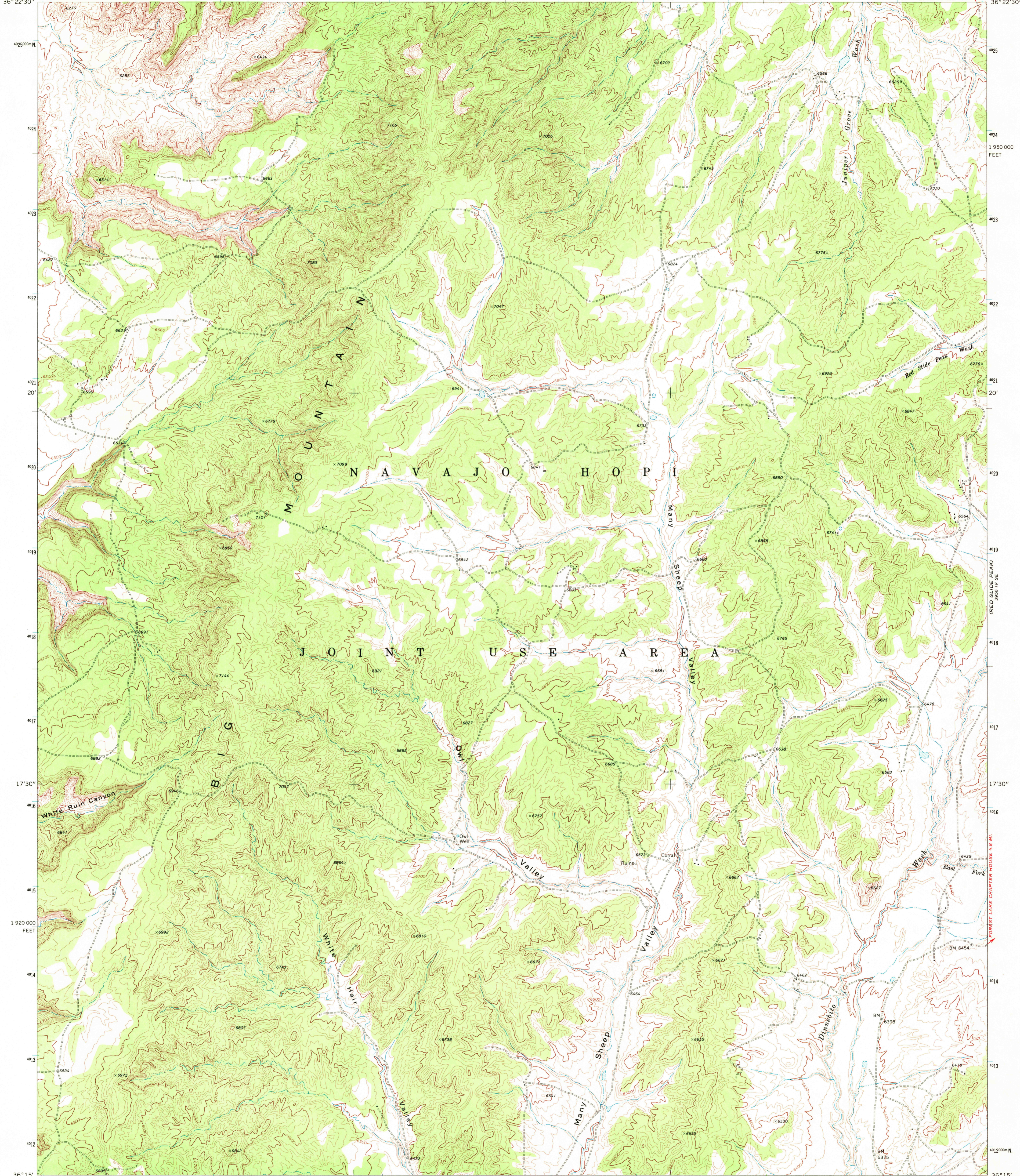
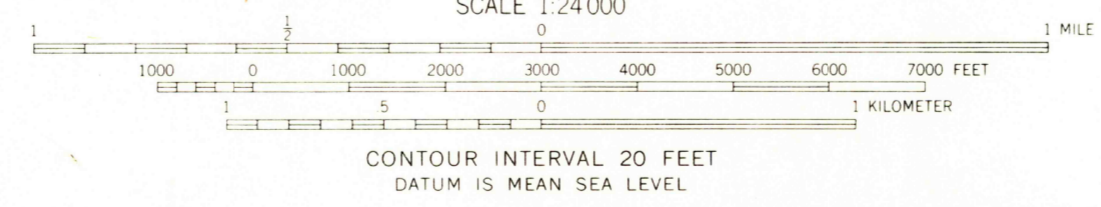
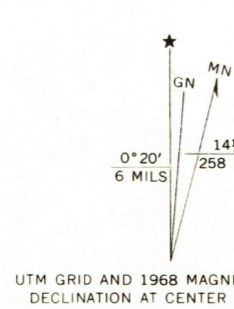


36° 22' 30" 110° 30' 145 000' E 146 147 148 27' 30" 149 150 (GREAT SPRING) 151 152 25' 153 430 000 FEET 154 155 21 MI. TO U.S. 164 110° 22' 30" 36° 22' 30"



Mapped, edited, and published by the Geological Survey  
Control by USGS and USC&GS  
Topography by photogrammetric methods from aerial photographs taken 1967. Field checked 1968  
Polyconic projection. 1927 North American datum  
10,000-foot grid based on Arizona coordinate system, east zone  
1000-meter Universal Transverse Mercator grid ticks, zone 12, shown in blue  
Land lines have not been established in this area



ROAD CLASSIFICATION  
Unimproved dirt -----

THIS MAP COMPLIES WITH NATIONAL MAP ACCURACY STANDARDS  
FOR SALE BY U. S. GEOLOGICAL SURVEY, DENVER, COLORADO 80225, OR WASHINGTON, D. C. 20242  
A FOLDER DESCRIBING TOPOGRAPHIC MAPS AND SYMBOLS IS AVAILABLE ON REQUEST

USGS  
HISTORICAL FILE  
TOPOGRAPHIC DIVISION

OWL VALLEY, ARIZ.  
N3615—W11022.5/7.5

1968  
AMS 3956 IV SW—SERIES V898

JAN 3 1972