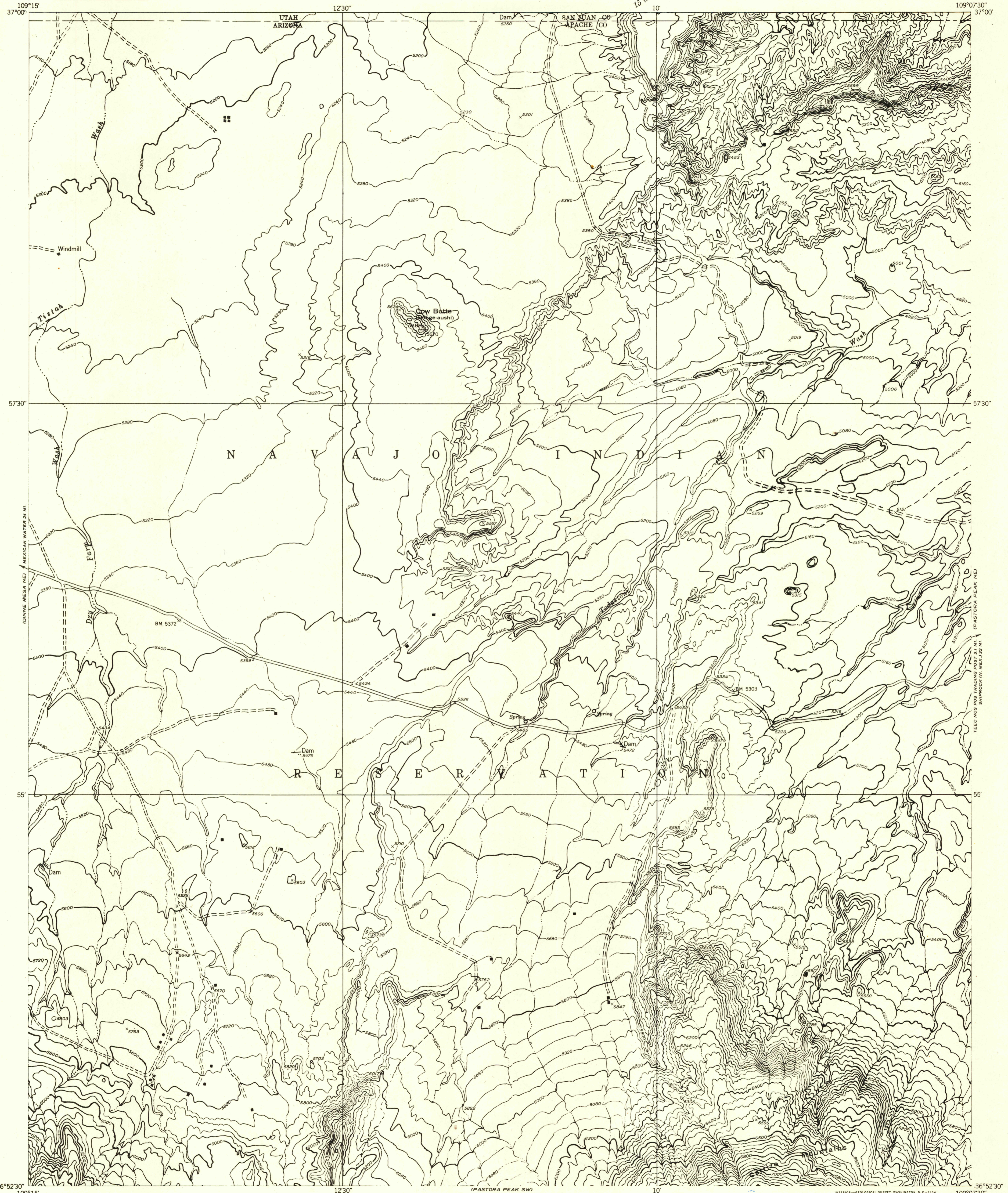


U.S.G.S.
FILE COPY
Lithographer and Editor

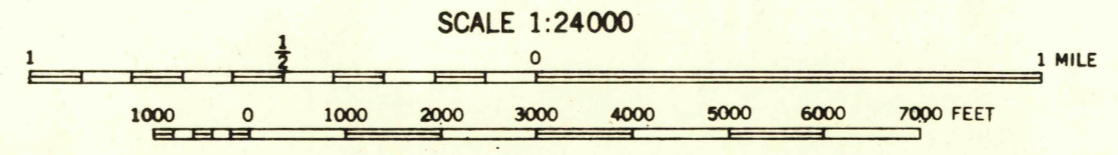
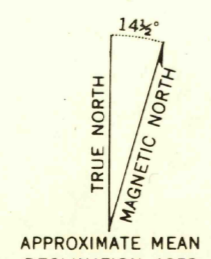
UNITED STATES
DEPARTMENT OF THE INTERIOR
GEOLOGICAL SURVEY

Preliminary edition
Pending completion of 1:62,500 scale
15 minute maps covering this area

PASTORA PEAK NW QUADRANGLE
ARIZONA-UTAH



Mapped by the Geological Survey 1953
Topography by multiplex methods from
aerial photographs taken 1950



CONTOUR INTERVAL 40 FEET
DATUM IS MEAN SEA LEVEL

USGS
Historical File
Topographic Division

ROAD CLASSIFICATION
Improved ——— Unimproved - - - - -

U.S.G.S.
FILE COPY
Lithographer and Editor

PASTORA PEAK NW, ARIZ.-UTAH
N3652.5-W10907.5/7.5

JUN 23 1954