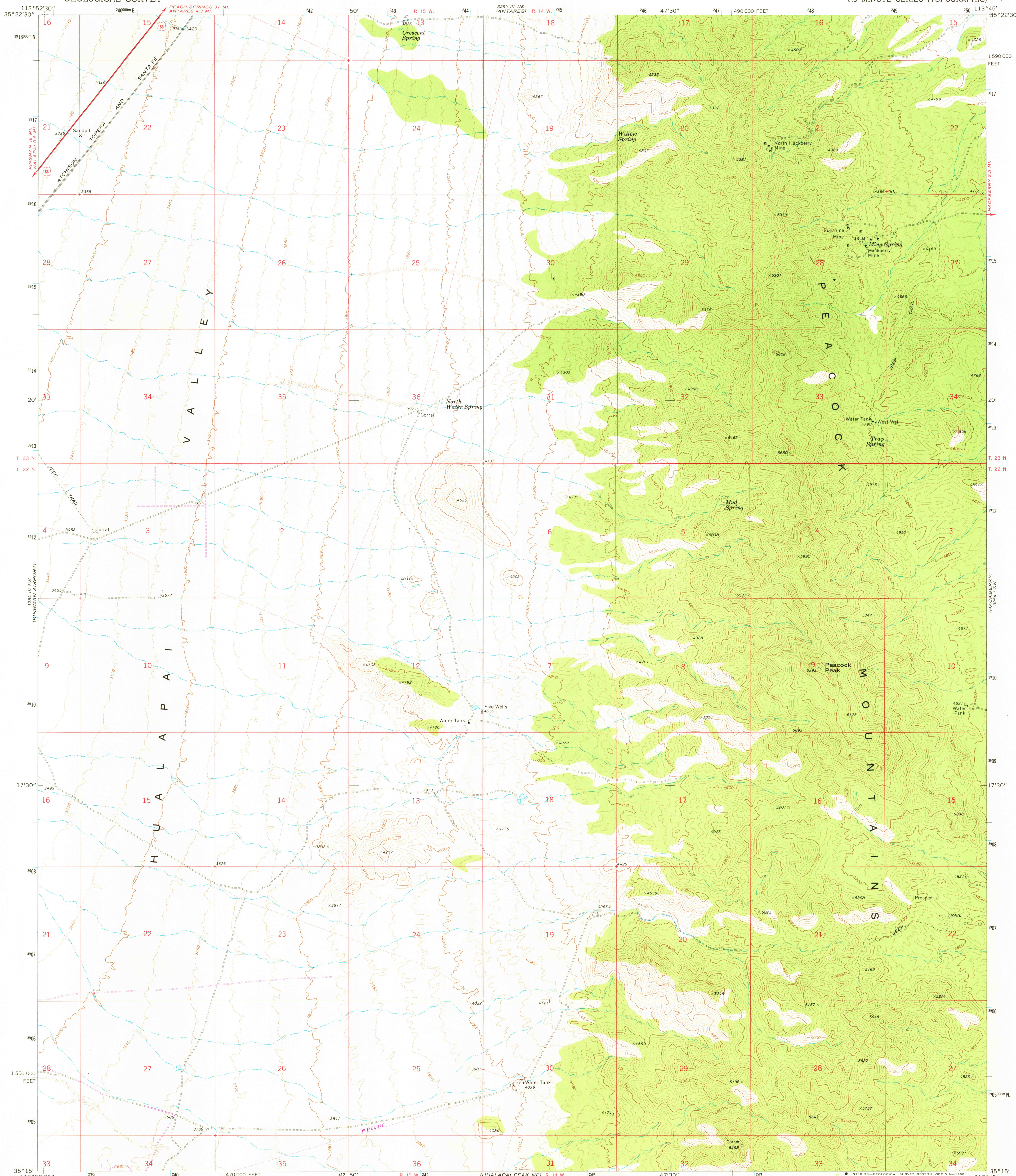
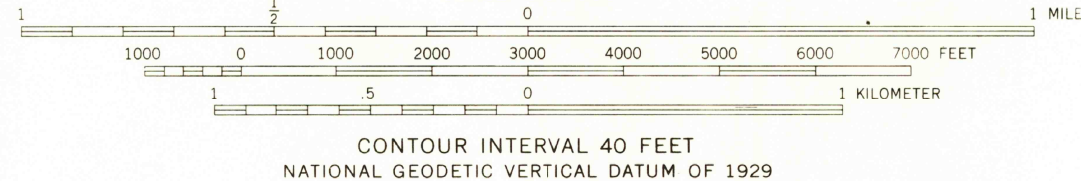
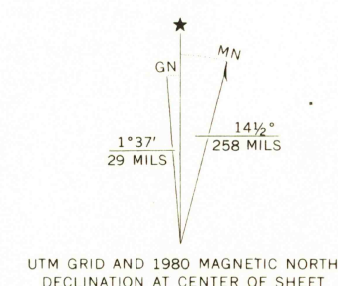


UNITED STATES  
DEPARTMENT OF THE INTERIOR  
GEOLOGICAL SURVEY

PEACOCK PEAK QUADRANGLE  
ARIZONA—MOHAVE CO.  
7.5 MINUTE SERIES (TOPOGRAPHIC)



Mapped, edited, and published by the Geological Survey  
Control by USGS and NOS/NOAA  
Topography by photogrammetric methods from aerial  
photographs taken 1967. Field checked 1968  
Polyconic projection. 1927 North American datum  
10,000-foot grid based on Arizona coordinate system, west zone  
1000-meter Universal Transverse Mercator grid ticks,  
zone 12, shown in blue  
To place on the predicted North American Datum 1983  
move the projection lines 2 meters north and  
71 meters east as shown by dashed corner ticks  
Fine red dashed lines indicate selected fence lines



ROAD CLASSIFICATION  
Heavy-duty — Unimproved dirt —  
U.S. Route

USGS  
Historical File  
Topographic Division

PEACOCK PEAK, ARIZ.  
N3515—W11345/7.5  
1968  
PHOTOREVISED 1980  
DMA 1234 IV SE—SERIES 1698

THIS MAP COMPLIES WITH NATIONAL MAP ACCURACY STANDARDS  
FOR SALE BY U. S. GEOLOGICAL SURVEY, DENVER, COLORADO 80225, OR RESTON, VIRGINIA 22092  
A FOLDER DESCRIBING TOPOGRAPHIC MAPS AND SYMBOLS IS AVAILABLE ON REQUEST

Revisions shown in purple compiled by the Geological Survey  
from aerial photographs taken 1978 and other source data  
This information not field checked. Map edited 1980

AUG 14 1980

1894