

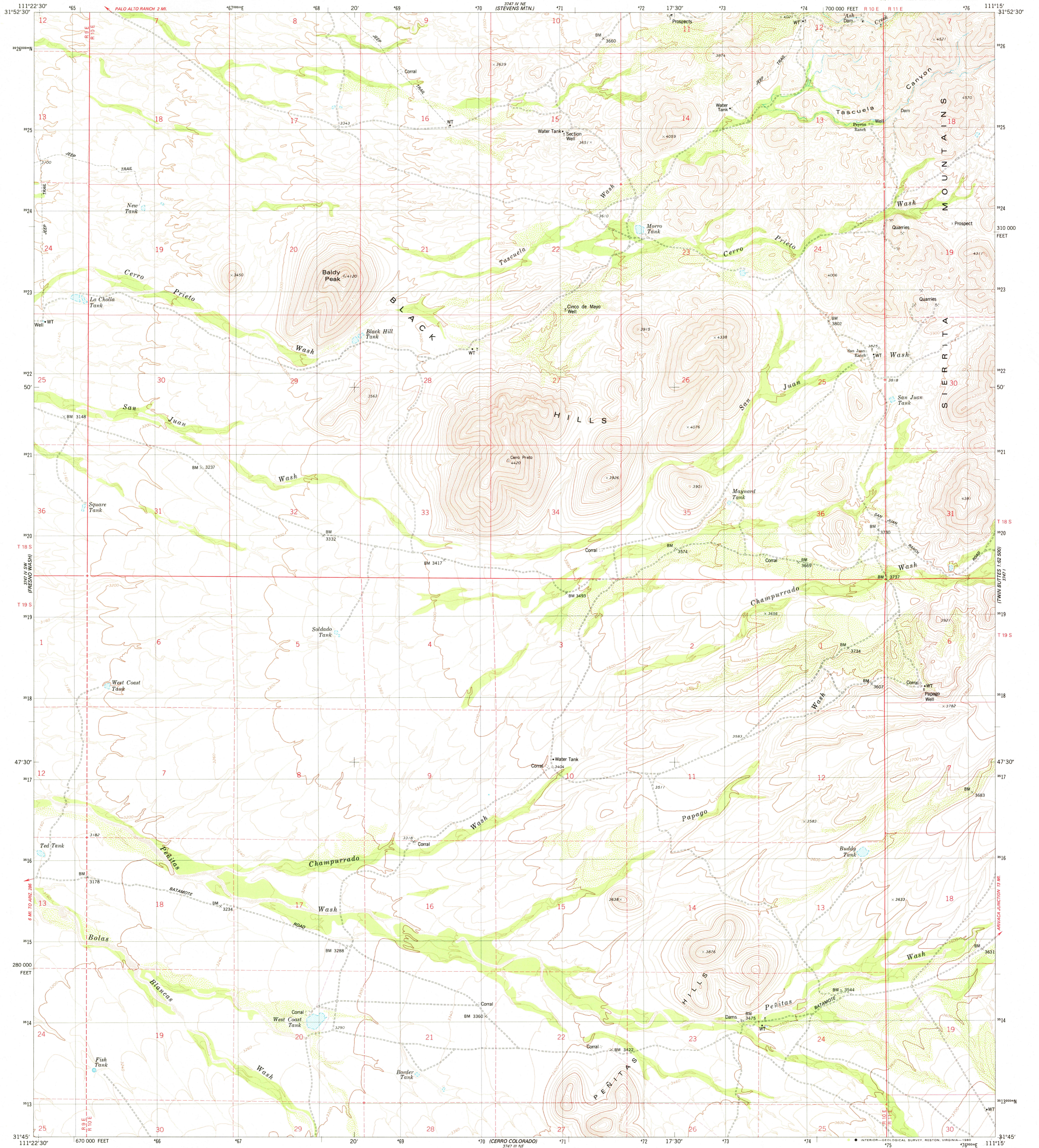
PALEO ALTO RANCH

UNITED STATES DEPARTMENT OF THE INTERIOR GEOLOGICAL SURVEY



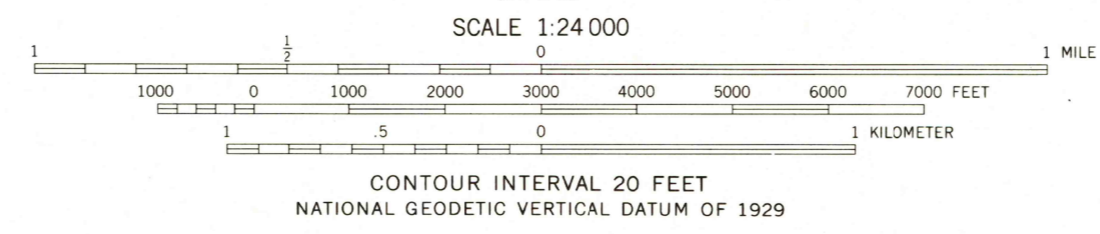
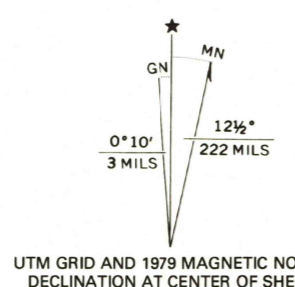
PEÑITAS HILLS QUADRANGLE ARIZONA—PIMA CO. 7.5 MINUTE SERIES (TOPOGRAPHIC)

PALEO ALTO RANCH



Mapped, edited, and published by the Geological Survey

Control by USGS and NOS/NOAA. Topography by photogrammetric methods from aerial photographs taken 1974. Field checked 1975. Map edited 1979. Projection and 10,000-foot grid ticks: Arizona coordinate system, central zone (transverse Mercator) 1000-meter Universal Transverse Mercator grid, zone 12 1927 North American Datum To place on the predicted North American Datum 1983 move the projection lines 7 meters south and 63 meters east as shown by dashed corner ticks Fine red dashed lines indicate selected fence and field lines where generally visible on aerial photographs. This information is unchecked



ROAD CLASSIFICATION table with symbols for primary highway, secondary highway, unimproved road, interstate route, U.S. Route, and State Route.

THIS MAP COMPLIES WITH NATIONAL MAP ACCURACY STANDARDS FOR SALE BY U. S. GEOLOGICAL SURVEY, DENVER, COLORADO 80225, OR RESTON, VIRGINIA 22092 A FOLDER DESCRIBING TOPOGRAPHIC MAPS AND SYMBOLS IS AVAILABLE ON REQUEST

MAR 25 1980 PEÑITAS HILLS, ARIZ. SE/4 PALEO ALTO RANCH 15' QUADRANGLE N3145—W11115/7.5 1979 DMA 3747 IV SE—SERIES V898

2900