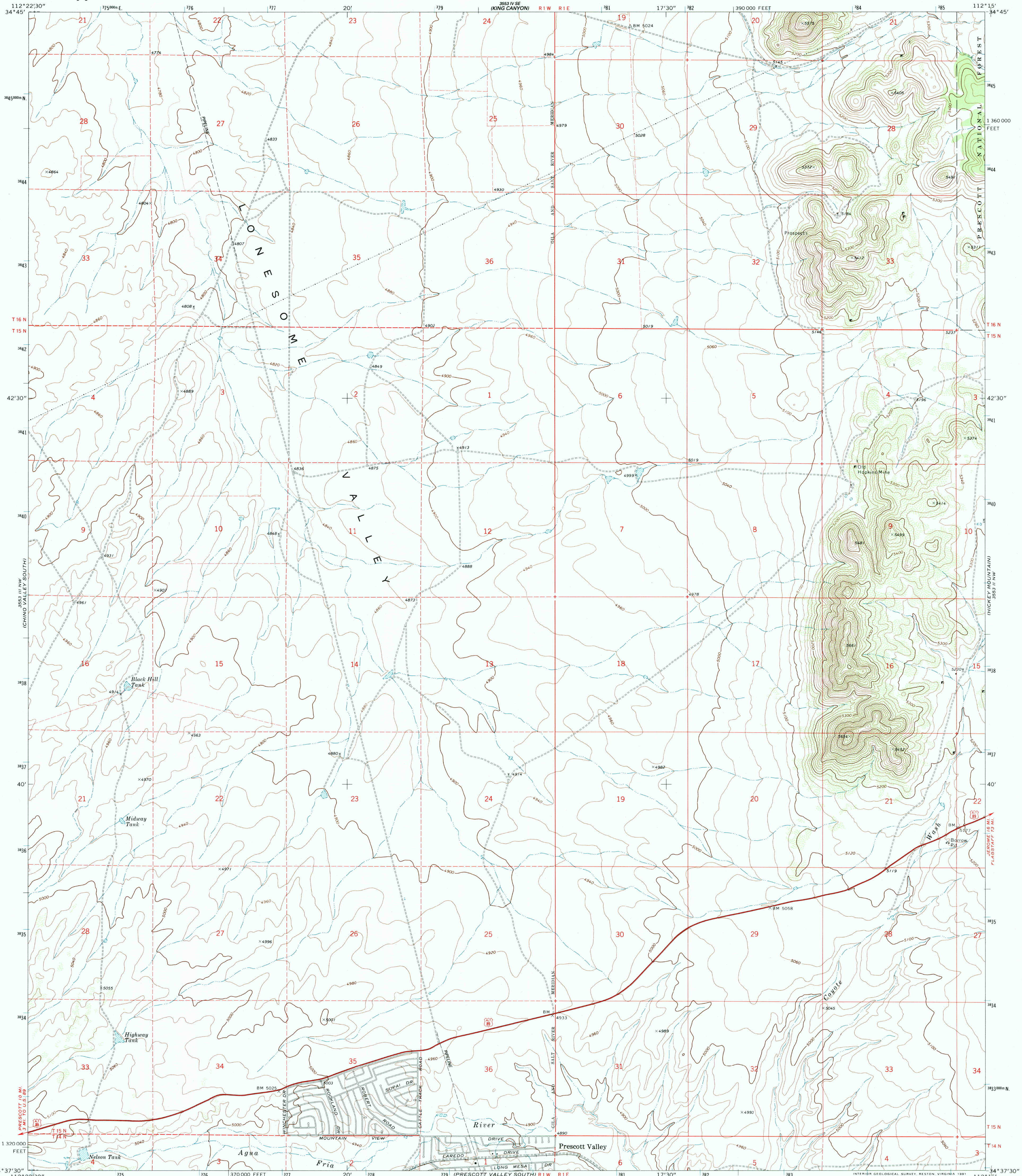




U.S. DEPARTMENT OF THE INTERIOR
U.S. GEOLOGICAL SURVEY

PRESCOTT VALLEY NORTH QUADRANGLE
ARIZONA—YAVAPAI CO.
7.5 MINUTE SERIES (TOPOGRAPHIC)
NE/4 PRESCOTT 15' QUADRANGLE



Mapped, edited, and published by the Geological Survey

Control by USGS and NOS/NOAA

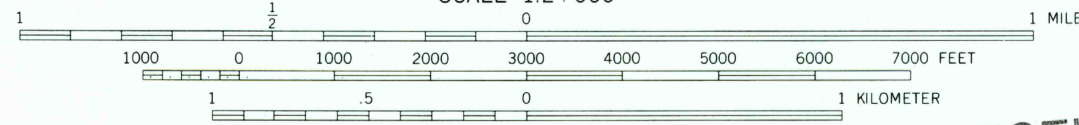
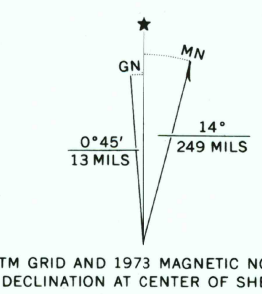
Topography by photogrammetric methods from aerial photographs taken 1972. Field checked 1973

Polyconic projection. 1927 North American Datum
10,000-foot grid based on Arizona coordinate system, central zone
1000-meter Universal Transverse Mercator grid ticks, zone 12
shown in blue. The difference between 1927 N-11th American Datum
and North American Datum of 1983 (NAD 83) for 7.5 minute
intersections is given in USGS Bulletin 1875. The NAD 83 is shown
by dashed corner ticks

Fine red dashed lines indicate selected fence lines

Where omitted, land lines have not been established

There may be private inholdings within the boundaries of the
National or State reservations shown on this map



CONTOUR INTERVAL 20 FEET
DOTTED LINES REPRESENT 10-FOOT CONTOURS
NATIONAL GEODETIC VERTICAL DATUM OF 1929

THIS MAP COMPLIES WITH NATIONAL MAP ACCURACY STANDARDS
FOR SALE BY U.S. GEOLOGICAL SURVEY
P.O. BOX 25286, DENVER, COLORADO 80225

A FOLDER DESCRIBING TOPOGRAPHIC MAPS AND SYMBOLS IS AVAILABLE ON REQUEST

ROAD CLASSIFICATION

Primary highway, hard surface ———— Light-duty road, hard or improved surface ————
Secondary highway, hard surface ———— Unimproved road ————
Interstate Route ———— U.S. Route ———— State Route ————



PRESCOTT VALLEY NORTH, ARIZ.

34112-F3-TF-024

1973

DMA 3553 III NE-SERIES V988

