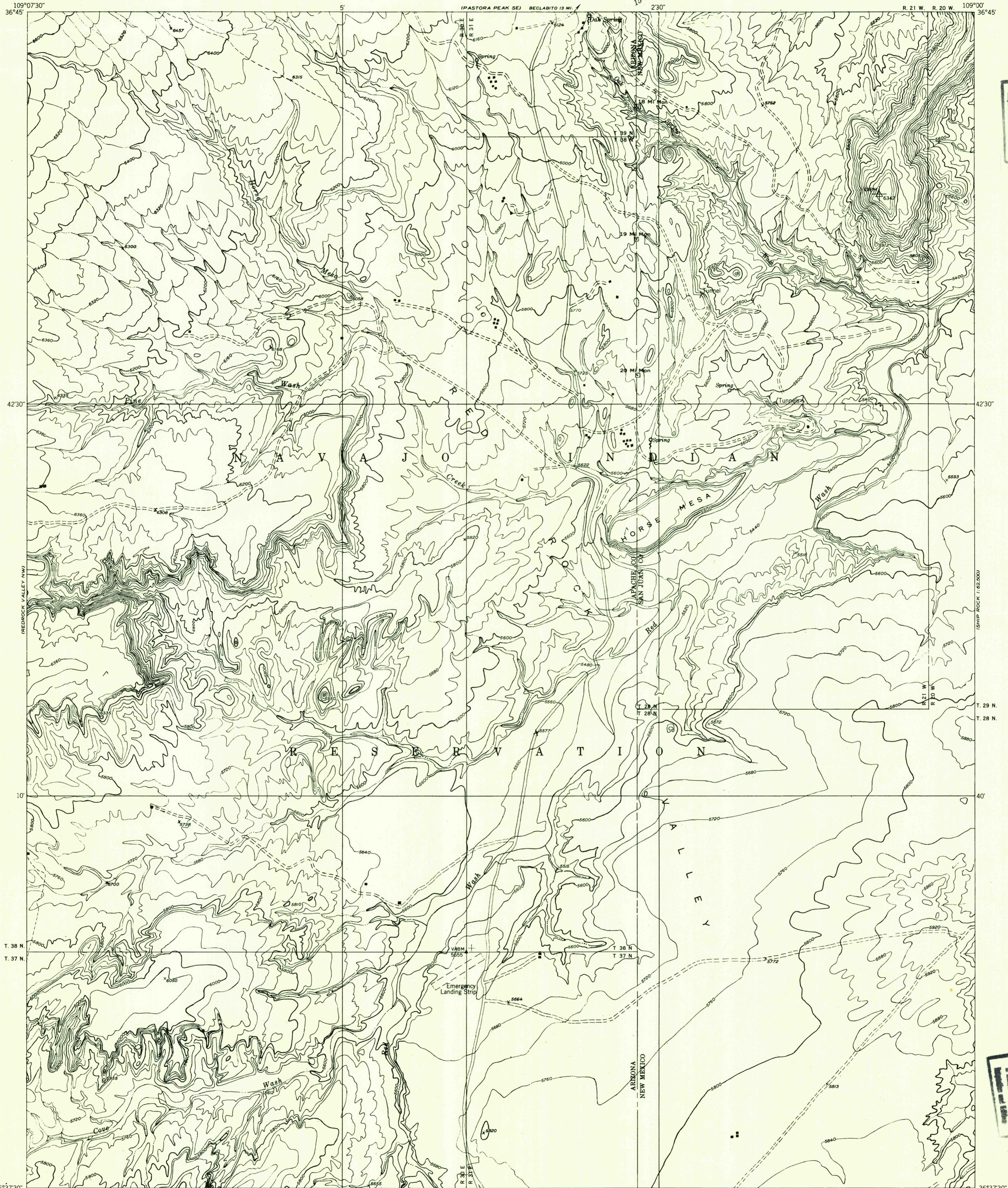


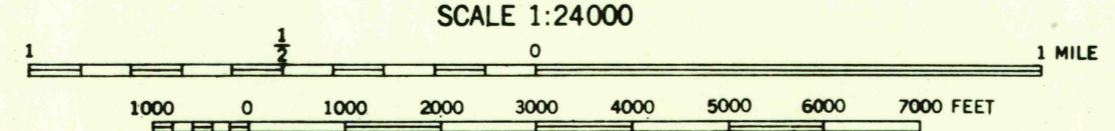
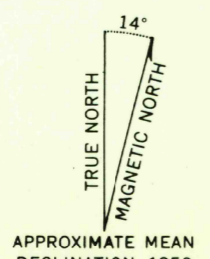
Preliminary edition  
Pending completion of 1:62,500 scale  
15 minute maps covering this area



FILE COPY

FILE COPY

Mapped by the Geological Survey 1953  
Topography by multiplex methods from  
aerial photographs taken 1950



CONTOUR INTERVAL 40 FEET  
DATUM IS MEAN SEA LEVEL

USGS  
Historical File  
Topographic Division

ROAD CLASSIFICATION

Heavy-duty	Light-duty
Medium-duty	Unimproved dirt
U. S. Route	State Route

REDROCK VALLEY NE, ARIZ.-N. MEX.  
N3637.5-W10900/7.5

JUN 22 1954

2060