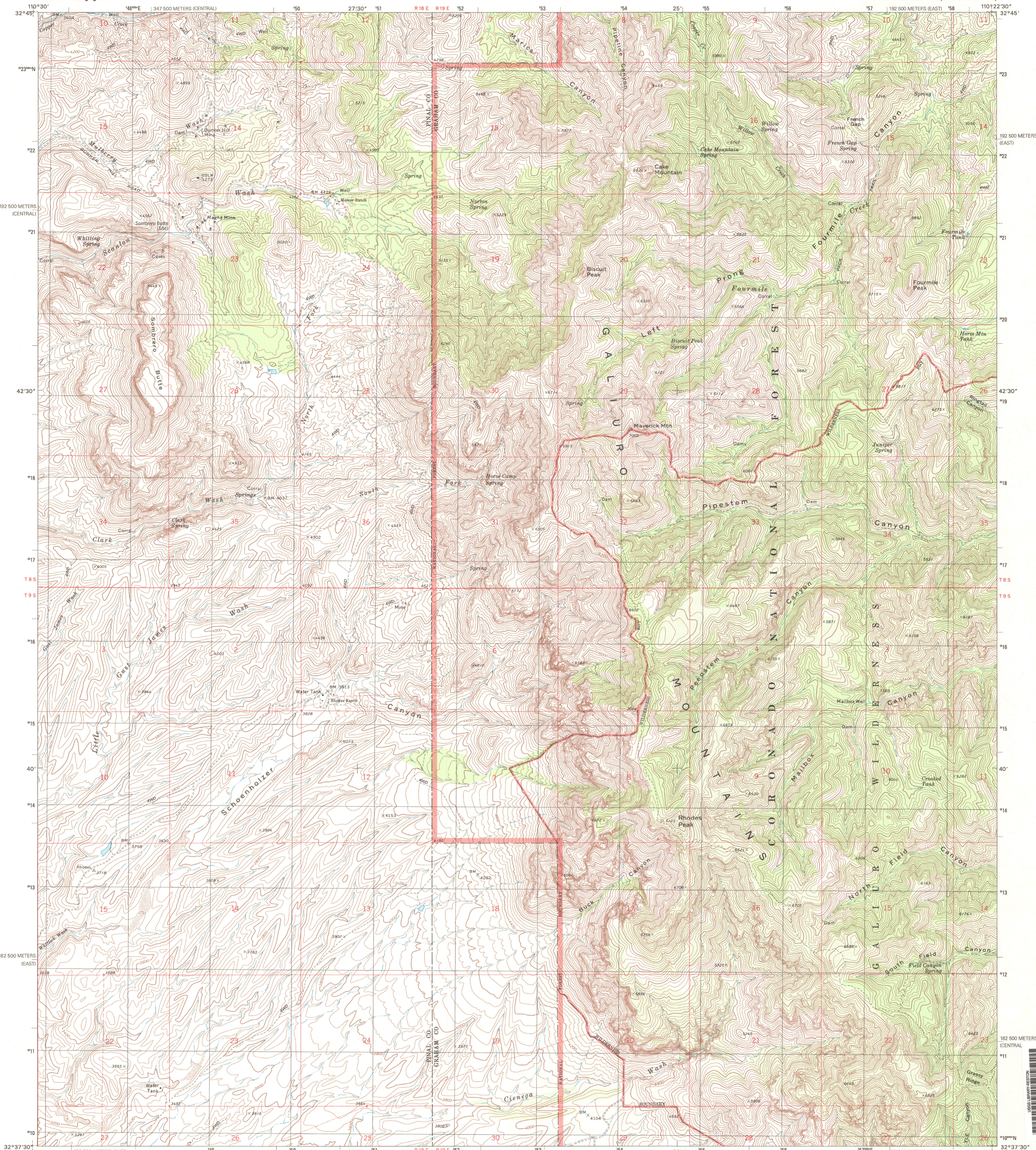


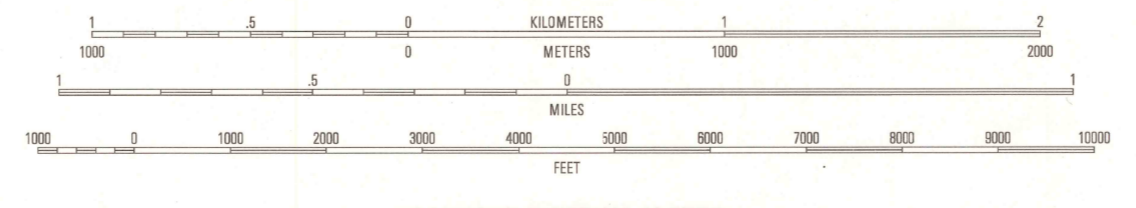
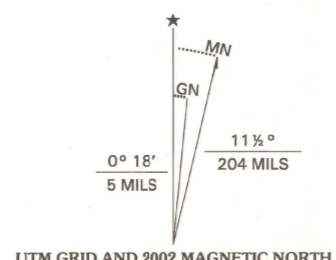


U.S. DEPARTMENT OF THE INTERIOR
U.S. GEOLOGICAL SURVEY

RHODES PEAK QUADRANGLE
ARIZONA
7.5-MINUTE SERIES (TOPOGRAPHIC)

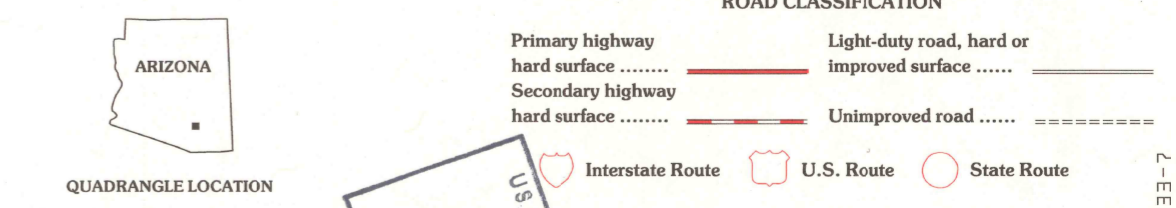


Produced by the United States Geological Survey
Topography compiled 1971. Planimetry derived from imagery taken 1946 and other sources. Public Land Survey System and survey control current as of 1972. Boundaries current as of 2001.
North American Datum of 1983 (NAD 83). Projection and 1 000-meter grid: Universal Transverse Mercator, zone 12 2 500-meter ticks: Arizona Coordinate System of 1983 (east and central zones)
North American Datum of 1927 (NAD 27) is shown by dashed corner ticks. The values of the shift between NAD 83 and NAD 27 for 7.5-minute intersections are obtainable from National Geodetic Survey NADCON software.
There may be private inholdings within the boundaries of the National or State Reservations shown on this map.
Houses of worship, schools, and other labeled buildings verified 1972.

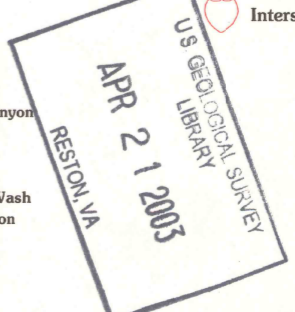


CONTOUR INTERVAL 40 FEET
NATIONAL GEODETIC VERTICAL DATUM OF 1929
(TO CONVERT ELEVATIONS TO THE NORTH AMERICAN VERTICAL DATUM OF 1988, ADD 3 FEET)
TO CONVERT FROM FEET TO METERS, MULTIPLY BY 0.3048

THIS MAP COMPLIES WITH NATIONAL MAP ACCURACY STANDARDS
FOR SALE BY U.S. GEOLOGICAL SURVEY, P.O. BOX 25286, DENVER, COLORADO 80225
A FOLDER DESCRIBING TOPOGRAPHIC MAPS AND SYMBOLS IS AVAILABLE ON REQUEST



1	2	3	1 Holy Joe Peak
2	3	4	2 Oak Grove Canyon
3	4	5	3 Kennedy Peak
4	5	6	4 Clark Ranch
5	6	7	5 Kennedy Peak
6	7	8	6 Peppersauce Wash
			7 Washers Canyon
			8 Bassett Peak



RHODES PEAK, AZ
1996
NIMA 3949 III NW-SERIES V988

