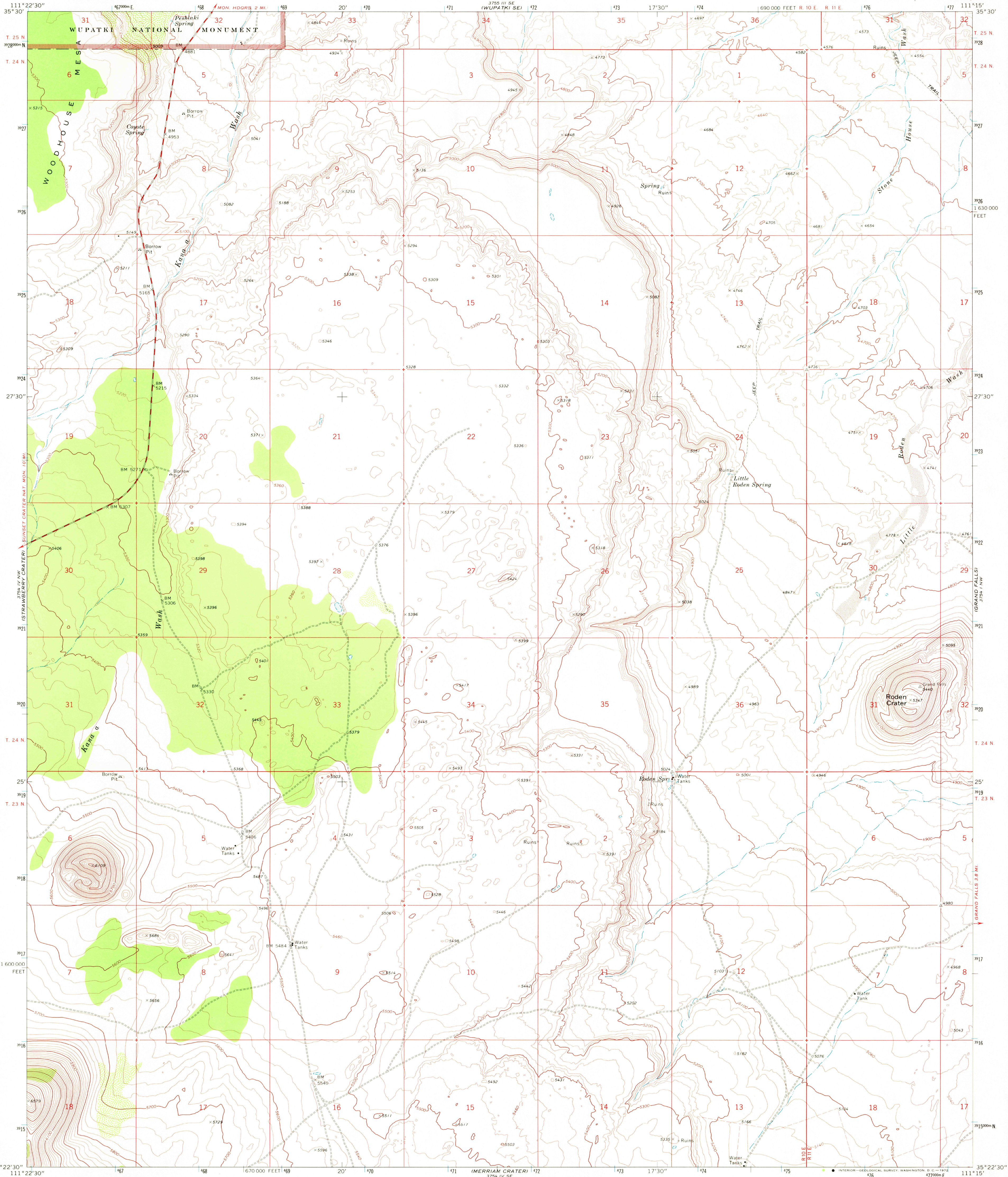


UNITED STATES
DEPARTMENT OF THE INTERIOR
GEOLOGICAL SURVEY

RODEN CRATER QUADRANGLE
ARIZONA—COCONINO CO.
7.5 MINUTE SERIES (TOPOGRAPHIC)



Mapped, edited, and published by the Geological Survey
Control by USGS and USC&GS
Topography by photogrammetric methods from aerial
photographs taken 1968. Field checked 1969
Polyconic projection. 1927 North American datum
10,000-foot grid based on Arizona coordinate system; central zone
1000-meter Universal Transverse Mercator grid ticks,
zone 12, shown in blue
Fine red dashed lines indicate selected fence lines

UTM GRID AND 1969 MAGNETIC NORTH
DECLINATION AT CENTER OF SHEET

SCALE 1:24 000
CONTOUR INTERVAL 20 FEET
DATUM IS MEAN SEA LEVEL



ROAD CLASSIFICATION
Primary highway, Light-duty road, hard or
hard surface improved surface
Secondary highway, Unimproved road
hard surface
Interstate Route U. S. Route State Route

USGS HISTORICAL FILE TOPOGRAPHIC DIVISION
RODEN CRATER, ARIZ.
N3522.5-W11115.7.5
1969

AMS 3754 IV NE—SERIES V898

JUL 3 1972
3790