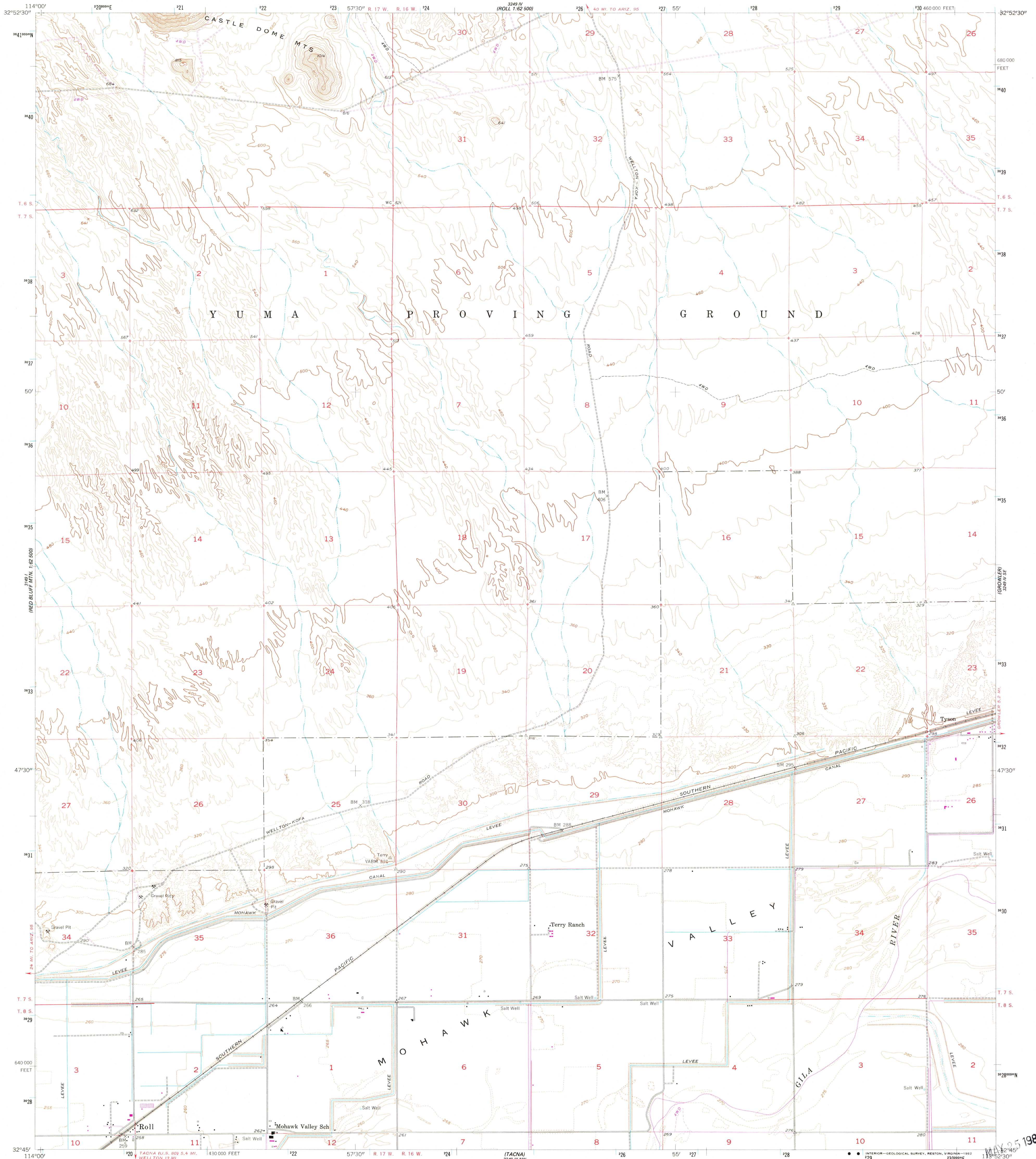


RED BLUF. MTN. 1:62 500'

UNITED STATES DEPARTMENT OF THE INTERIOR GEOLOGICAL SURVEY

ROLL QUADRANGLE ARIZONA—YUMA CO. 7.5 MINUTE SERIES (TOPOGRAPHIC)

ROLL IV (ROLL 1:62 500')



Mapped, edited, and published by the Geological Survey

Control by USGS, NOS/NOAA, and USBR

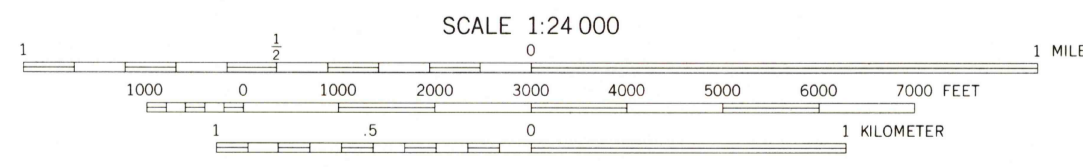
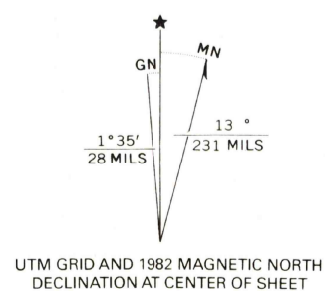
Topography from aerial photographs by Kelsch plotter and from plane-table surveys by USBR 1940 Aerial photographs taken 1953. Field check 1955

Polycyclic projection, 1927 North American datum 10,000-foot grid based on Arizona coordinate system, west zone

1000-meter Universal Transverse Mercator grid ticks, zone 12, shown in blue.

To place on the predicted North American Datum 1983 move the projection lines 4 meters south and 71 meters east as shown by dashed corner ticks

There may be private inholdings within the boundaries of the National or State reservations shown on this map



CONTOUR INTERVAL 20 FEET DOTTED LINES REPRESENT 5-FOOT CONTOURS NATIONAL GEODETIC VERTICAL DATUM OF 1929

THIS MAP COMPLIES WITH NATIONAL MAP ACCURACY STANDARDS FOR SALE BY U. S. GEOLOGICAL SURVEY, DENVER, COLORADO 80225, OR RESTON, VIRGINIA 22092 A FOLDER DESCRIBING TOPOGRAPHIC MAPS AND SYMBOLS IS AVAILABLE ON REQUEST

ROAD CLASSIFICATION table with symbols for Heavy-duty, Medium-duty, Light-duty, and Unimproved dirt roads, as well as U.S. and State Routes.



ROLL, ARIZ. N3245-W1152.5/7.5

1955 PHOTOREVISED 1982 DMA 3249 IV SW—SERIES V898

Revisions shown in purple compiled from aerial photographs taken 1980 and other source data This information not field checked. Map edited 1982

MAY 25 1982

2900