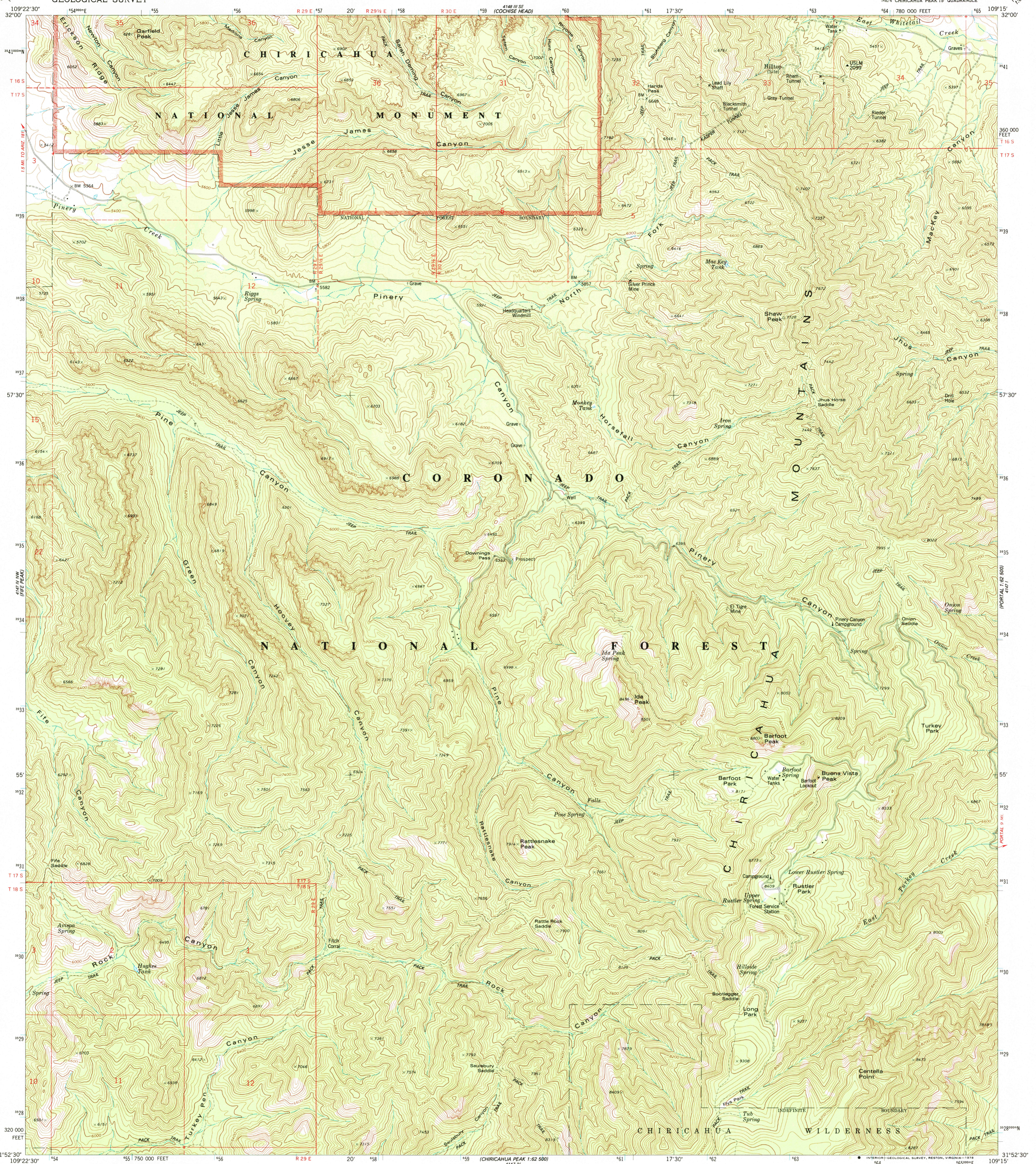


1:50,000
1:50,000
1:50,000

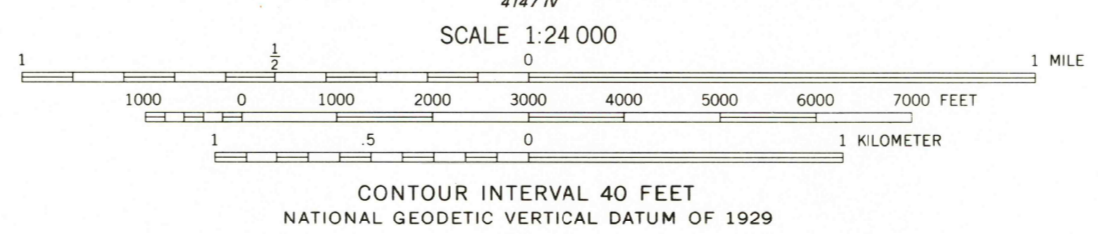
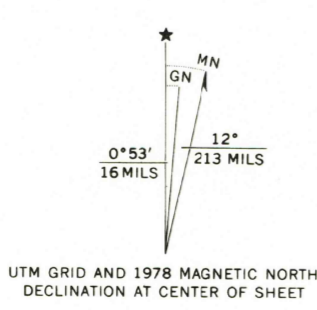
UNITED STATES
DEPARTMENT OF THE INTERIOR
GEOLOGICAL SURVEY

RUSTLER PARK QUADRANGLE
ARIZONA—COCHISE CO.
7.5 MINUTE SERIES (TOPOGRAPHIC)
NE 1/4 CHIRICAHUA PEAK 15' QUADRANGLE

1:50,000
1:50,000
1:50,000

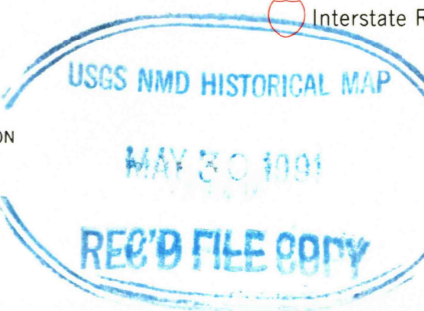


Mapped, edited, and published by the Geological Survey
Control by USGS and NOS/NOAA
Topography by photogrammetric methods from aerial
photographs taken 1973. Field checked 1974. Map edited 1978
Projection and 10,000-foot grid ticks: Arizona coordinate
system, east zone (transverse Mercator)
1000-meter Universal Transverse Mercator grid ticks,
zone 12, shown in blue. 1927 North American datum
Where omitted, land lines have not been established



ROAD CLASSIFICATION

Primary highway, hard surface	Light-duty road, hard or improved surface
Secondary highway, hard surface	Unimproved road
Interstate Route	U. S. Route
	State Route



RUSTLER PARK, ARIZONA
NE 1/4 CHIRICAHUA PEAK 15' QUADRANGLE
N3152.5—W10915.7.5
1978
AMS 4147 IV NE—SERIES V898

THIS MAP COMPLIES WITH NATIONAL MAP ACCURACY STANDARDS
FOR SALE BY U. S. GEOLOGICAL SURVEY, DENVER, COLORADO 80225, OR RESTON, VIRGINIA 22092
A FOLDER DESCRIBING TOPOGRAPHIC MAPS AND SYMBOLS IS AVAILABLE ON REQUEST