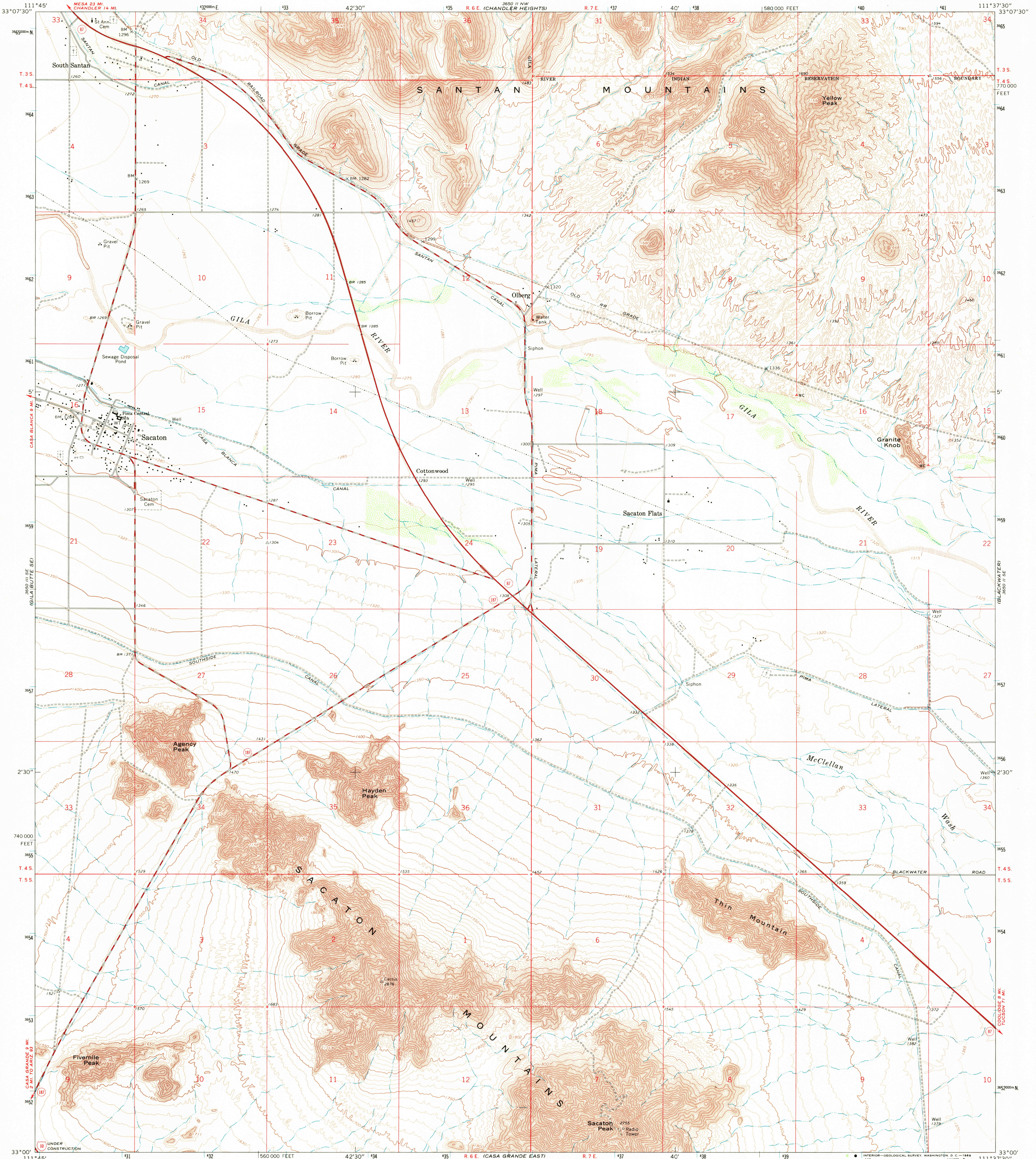
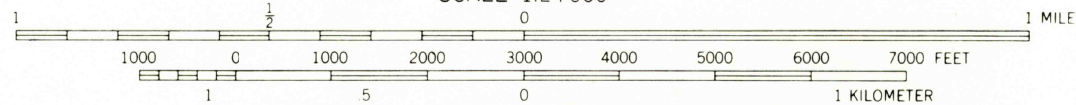
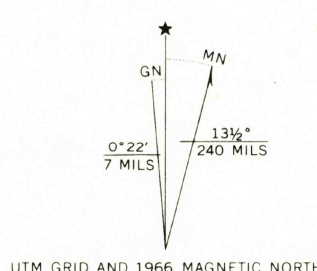


UNITED STATES  
DEPARTMENT OF THE INTERIOR  
GEOLOGICAL SURVEY

SACATON QUADRANGLE  
ARIZONA—PINAL CO.  
7.5 MINUTE SERIES (TOPOGRAPHIC)  
SW/4 SACATON 15' QUADRANGLE



Mapped, edited, and published by the Geological Survey  
Control by USGS, USC&GS, and USCE  
Topography by photogrammetric methods from aerial  
photographs taken 1963. Field checked 1966  
Polyconic projection. 1927 North American datum  
10,000-foot grid based on Arizona coordinate system, central zone  
1000-meter Universal Transverse Mercator grid ticks,  
zone 12, shown in blue



CONTOUR INTERVAL 10 FEET  
DOTTED LINES REPRESENT 5-FOOT CONTOURS  
DATUM IS MEAN SEA LEVEL

THIS MAP COMPLIES WITH NATIONAL MAP ACCURACY STANDARDS  
FOR SALE BY U. S. GEOLOGICAL SURVEY, DENVER, COLORADO 80225, OR WASHINGTON, D. C. 20242  
A FOLDER DESCRIBING TOPOGRAPHIC MAPS AND SYMBOLS IS AVAILABLE ON REQUEST

USGS  
Historical File  
Topographic Division



U.S.G.S.  
FILE COPY  
TOPOGRAPHIC DIVISION

ROAD CLASSIFICATION  
Heavy-duty ——— Light-duty ———  
Medium-duty ——— Unimproved dirt ———  
Interstate Route ——— State Route ———

SACATON, ARIZ.  
SW/4 SACATON 15' QUADRANGLE  
N3300—W11137.5/7.5

1966

AMS 3650 11 SW—SERIES V898

APR 2 1970