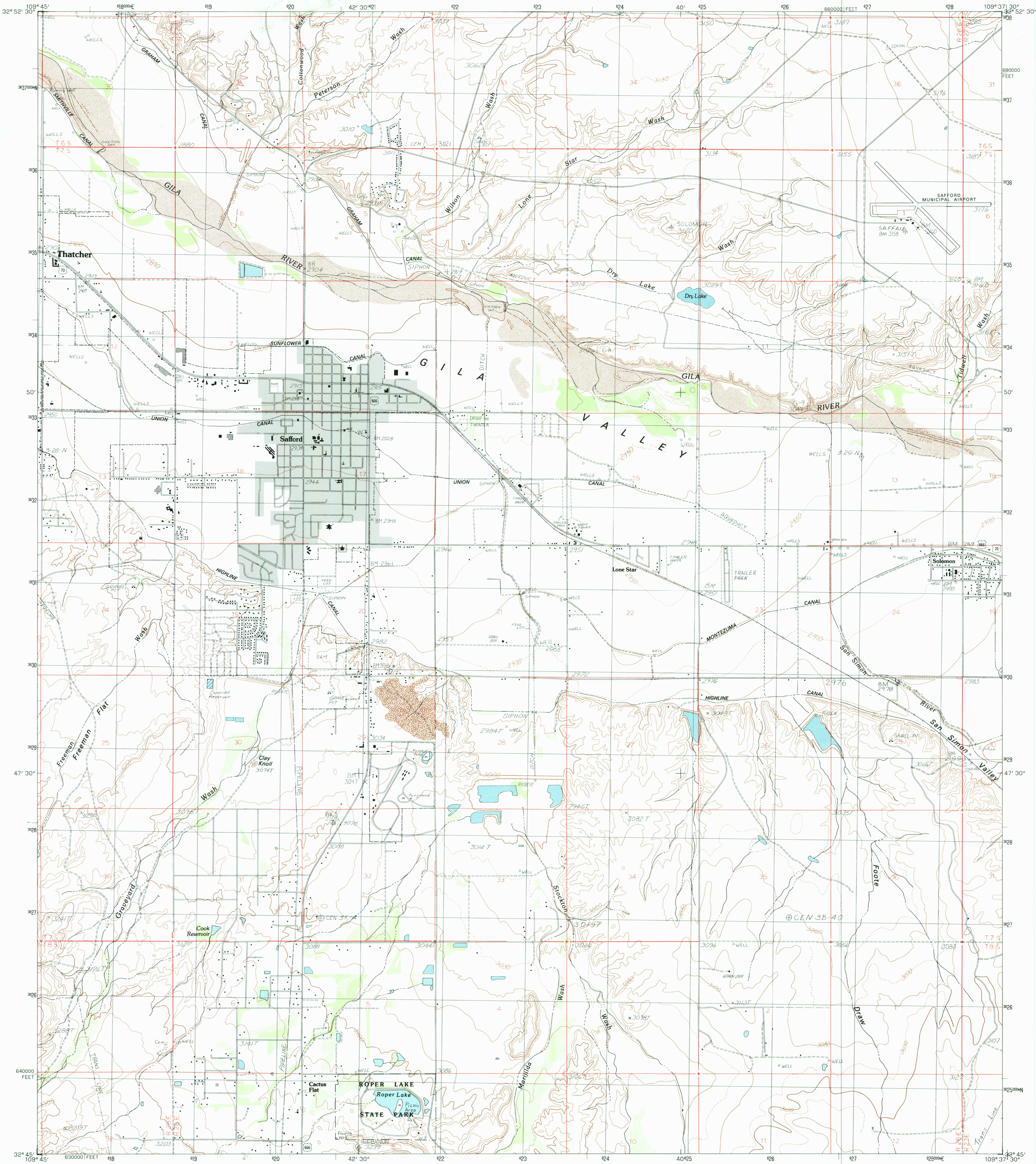


UNITED STATES  
DEPARTMENT OF THE INTERIOR  
GEOLOGICAL SURVEY

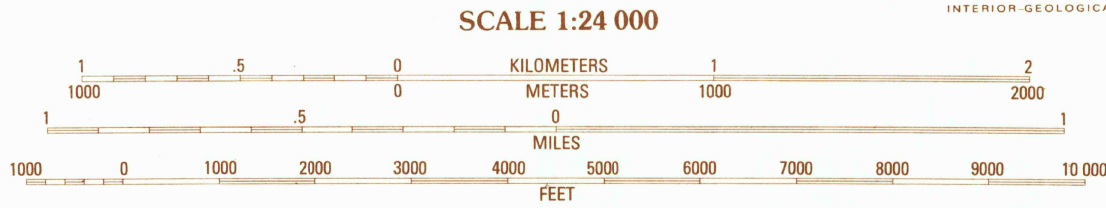
SAFFORD QUADRANGLE  
ARIZONA—GRAHAM CO.  
7.5 MINUTE SERIES (TOPOGRAPHIC)



PRODUCED BY THE UNITED STATES GEOLOGICAL SURVEY  
CONTROL BY U.S.G.S. NOS/NOAA AND SCS  
COMPILED FROM AERIAL PHOTOGRAPHS TAKEN 1957  
PLANETABLE SURVEYS 1960  
LIMITED REVISION FROM AERIAL PHOTOGRAPHS TAKEN 1981  
FIELD CHECKED 1983. MAP EDITED 1985  
PROJECTION TRANSVERSE MERCATOR  
GRID: 100-METER UNIVERSAL TRANSVERSE MERCATOR ZONE 12  
10,000-FOOT STATE GRID TICS ARIZONA, EAST ZONE  
UTM GRID DECLINATION 0°43' EAST  
1983 MAGNETIC NORTH DECLINATION 12° EAST  
VERTICAL DATUM NATIONAL GEODETIC VERTICAL DATUM OF 1929  
HORIZONTAL DATUM 1927 NORTH AMERICAN DATUM  
To place on the predicted North American Datum of 1983,  
move the projection lines as shown by dashed corner ticks  
(5 meters south and 60 meters east)  
There may be private inholdings within the boundaries of any  
Federal and State Reservations shown on this map.  
Public land survey system is shown as published in 1960 and  
verified or supplemented in 1983

**PROVISIONAL MAP**  
Produced from original  
manuscript drawings. Infor-  
mation shown as of date of  
field check.

Gray tint indicates area in which selected buildings are shown



CONTOUR INTERVAL 20 FEET  
SUPPLEMENTAL CONTOUR INTERVAL 10 FEET

To convert meters to feet multiply by 3.2808  
To convert feet to meters multiply by .3048

THIS MAP COMPLIES WITH NATIONAL MAP ACCURACY STANDARDS  
FOR SALE BY U.S. GEOLOGICAL SURVEY, DENVER, COLORADO 80225  
OR RESTON, VIRGINIA 22092



QUADRANGLE LOCATION

1	2	3	1 Pima
4	5	2 Weber Peak	
6	7	3 Lone Star Mtn.	
		4 Thatcher	
		5 San Jose	
		6 Mt. Graham	
		7 Artesia	
		8 Artesia NE	

ADJOINING 7.5' QUADRANGLE NAMES

MAR 04 1986  
REC'D FILE COPY

ROAD LEGEND

Improved Road .....  
Unimproved Road .....  
Trail .....  
Interstate Route ..... U.S. Route ..... State Route .....

SAFFORD, ARIZONA

PROVISIONAL EDITION 1985

32109-G6-TF-024