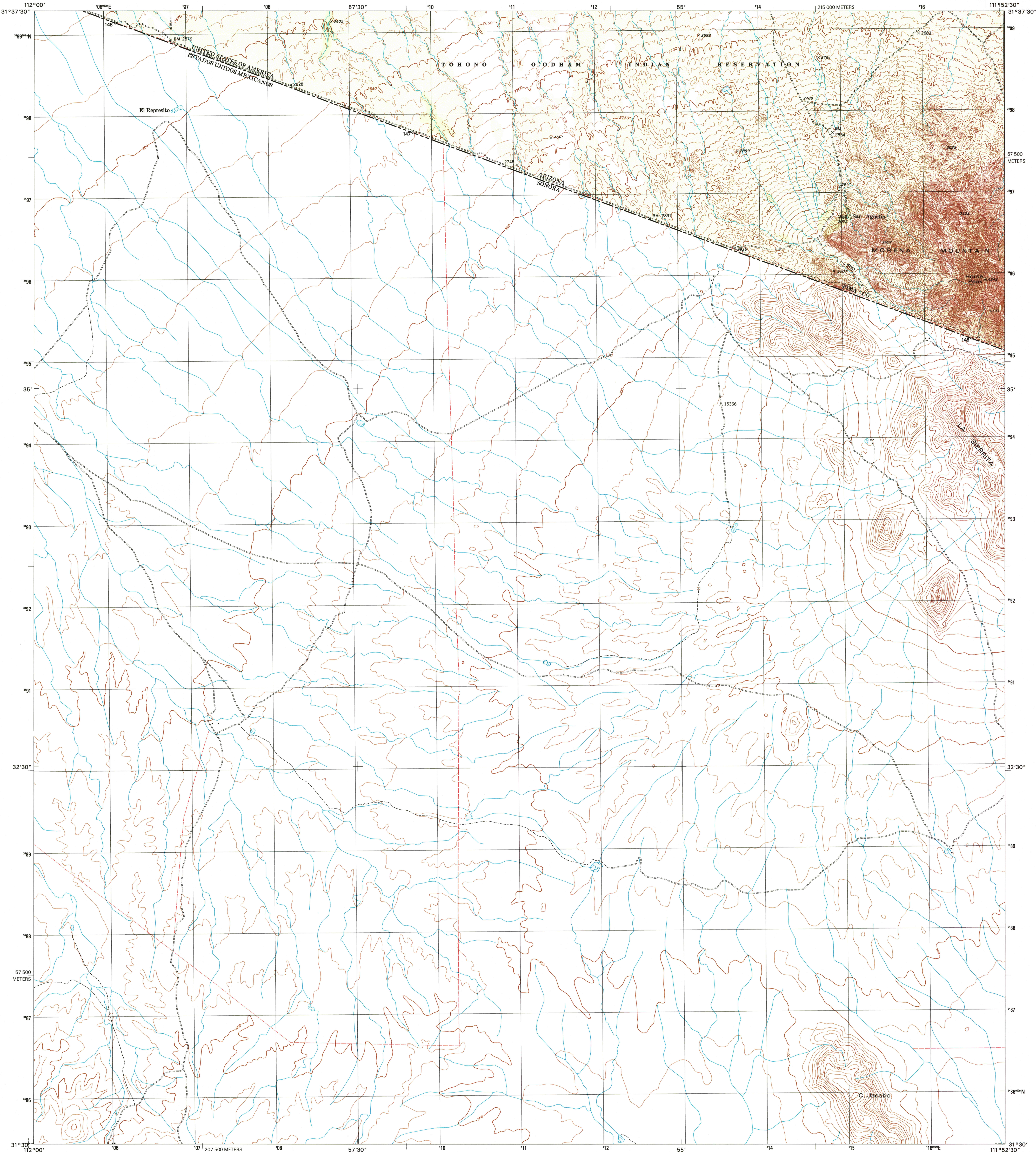


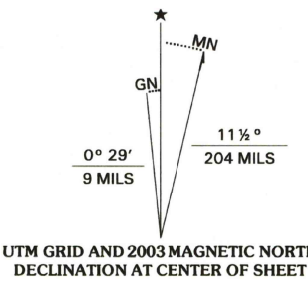


U.S. DEPARTMENT OF THE INTERIOR
U.S. GEOLOGICAL SURVEY

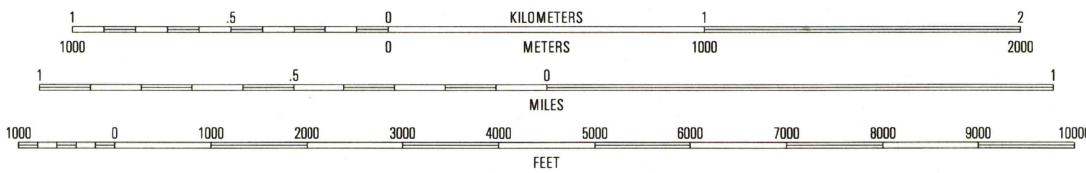
SAN AGUSTIN QUADRANGLE
ARIZONA-SONORA
7.5-MINUTE SERIES (TOPOGRAPHIC)



Produced by the United States Geological Survey
Topography compiled 1974. Planimetry derived from imagery taken 1996 and other sources. Public Land Survey System and survey control current as of 1975. Boundaries current as of 2002.
Mexico portion produced from Instituto Nacional de Estadística, Geografía e Informática (INEGI) data, dated 1994.
North American Datum of 1983 (NAD 83). Projection and 1 000-meter grid: Universal Transverse Mercator, zone 12. 2 500-meter ticks: Arizona Coordinate System of 1983 (central zone).
North American Datum of 1927 (NAD 27) is shown by dashed corner ticks. The values of the shift between NAD 83 and NAD 27 for 7.5-minute intersections are obtainable from National Geodetic Survey NADCON software.
There may be private inholdings within the boundaries of the National or State reservations shown on this map.
Land lines have not been established in this area.



UTM GRID AND 2003 MAGNETIC NORTH DECLINATION AT CENTER OF SHEET



CONTOUR INTERVAL 10 FEET IN THE UNITED STATES
U.S. PORTION ON NATIONAL GEODETIC VERTICAL DATUM OF 1929
(TO CONVERT ELEVATIONS TO THE NORTH AMERICAN VERTICAL DATUM OF 1988, ADD 2 FEET)
CONTOUR INTERVAL 10 METERS IN MEXICO
MEXICO DATUM IS MEAN SEA LEVEL
TO CONVERT FROM FEET TO METERS, MULTIPLY BY 0.3048

THE UNITED STATES PORTION COMPLIES WITH NATIONAL MAP ACCURACY STANDARDS
FOR SALE BY U.S. GEOLOGICAL SURVEY, P.O. BOX 25286, DENVER, COLORADO 80225
AND BY SERVICIO A USARIOS, INEGI, DIRECCIÓN DE INTEGRACIÓN Y ANÁLISIS, SUBDIRECCIÓN DE COMERCIALIZACIÓN,
HEROJE DE NACOZARI 2301 PUERTA 11, COL. DEL PARQUE C.P. 20290, AGUASCALIENTES, AGS, MEXICO
A FOLDER DESCRIBING U.S. TOPOGRAPHIC MAPS AND SYMBOLS IS AVAILABLE ON REQUEST



QUADRANGLE LOCATION

| | | | |
|---|---|---|------------------|
| 1 | 2 | 3 | 1 Tecolote Ranch |
| | | | 2 Vamori |
| 4 | | 5 | 3 South Kamelik |
| | | | 4 San Miguel |
| 6 | 7 | 8 | 5 San Miguel |
| | | | 6 |
| | | | 7 |
| | | | 8 |

ADJOINING 7.5' QUADRANGLES

ROAD CLASSIFICATION
Primary highway Light-duty road, hard or
hard surface improved surface
Secondary highway Unimproved road
hard surface
Interstate Route U.S. Route State Route

RECEIVED
MAY 28 2003

HISTORICAL MAP ARCHIVES
APR 2003

SAN AGUSTIN, AZ-SON

1996

NIMA 3647 III SW-SERIES V898

