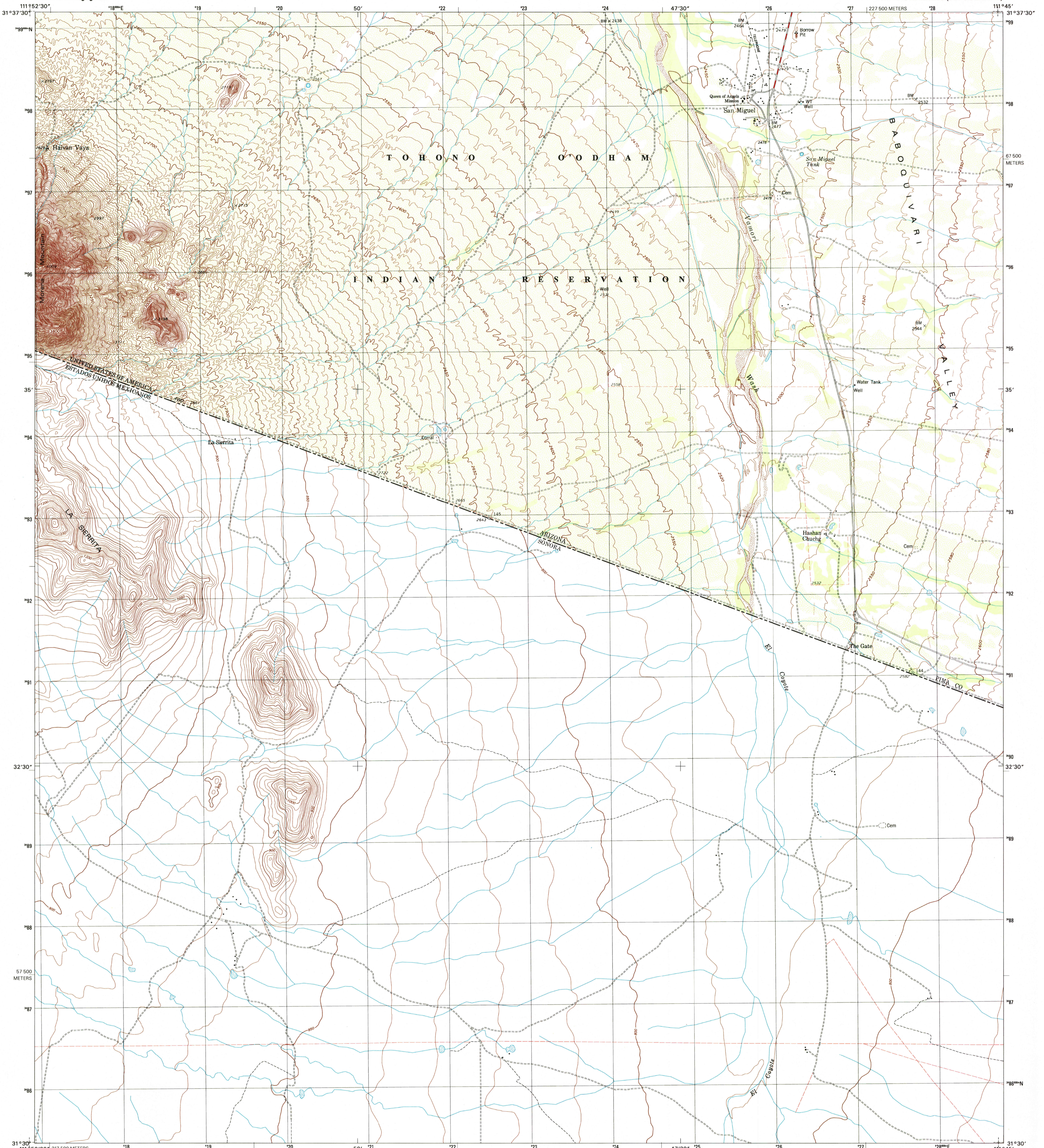


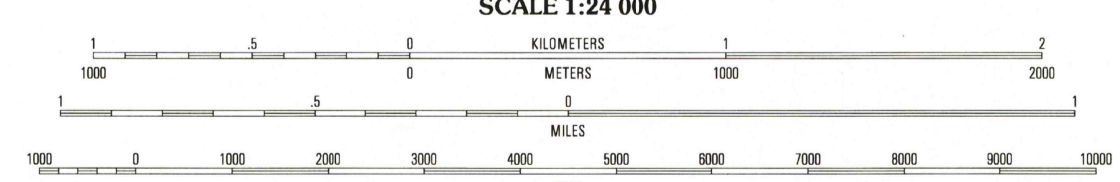
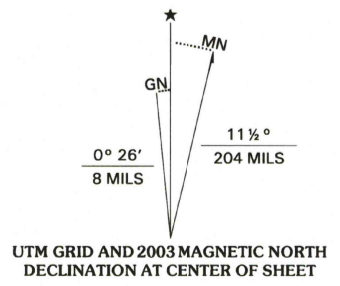


U.S. DEPARTMENT OF THE INTERIOR
U.S. GEOLOGICAL SURVEY

SAN MIGUEL QUADRANGLE
ARIZONA-SONORA
7.5-MINUTE SERIES (TOPOGRAPHIC)



Produced by the United States Geological Survey
Topography compiled 1974. Planimetry derived from imagery taken 1996 and other sources. Public Land Survey System and survey control current as of 1975. Boundaries current as of 2002.
Mexico portion produced from Instituto Nacional de Estadística, Geografía e Informática (INEGI) data, dated 1994.
North American Datum of 1983 (NAD 83). Projection and 1 000-meter grid: Universal Transverse Mercator, zone 12. 2 500-meter ticks: Arizona Coordinate System of 1983 (central zone).
North American Datum of 1927 (NAD 27) is shown by dashed corner ticks. The values of the shift between NAD 83 and NAD 27 for 7.5-minute intersections are obtainable from National Geodetic Survey NADCON software.
There may be private inholdings within the boundaries of the National or State reservations shown on this map.
Land lines have not been established in this area.
Houses of worship, schools, and other labeled buildings verified 1975.



SCALE 1:24 000
CONTOUR INTERVAL 10 FEET IN THE UNITED STATES
U.S. PORTION ON NATIONAL GEODETIC VERTICAL DATUM OF 1929
(TO CONVERT ELEVATIONS TO THE NORTH AMERICAN VERTICAL DATUM OF 1988, ADD 2 FEET)
CONTOUR INTERVAL 10 METERS IN MEXICO
MEXICO DATUM IS MEAN SEA LEVEL
TO CONVERT FROM FEET TO METERS, MULTIPLY BY 0.3048

THE UNITED STATES PORTION COMPLES WITH NATIONAL MAP ACCURACY STANDARDS
FOR SALE BY U.S. GEOLOGICAL SURVEY, P.O. BOX 25286, DENVER, COLORADO 80225
AND BY SERVICIO A USARIOS, INEGI, DIRECCIÓN DE INTEGRACIÓN Y ANÁLISIS, SUBDIRECCIÓN DE COMERCIALIZACIÓN,
HERÓE DE NACOZARI 2301 PUERTA 11, COL. DEL PARQUE C.P. 20290, AGUASCALIENTES, AGS, MEXICO
A FOLDER DESCRIBING U.S. TOPOGRAPHIC MAPS AND SYMBOLS IS AVAILABLE ON REQUEST

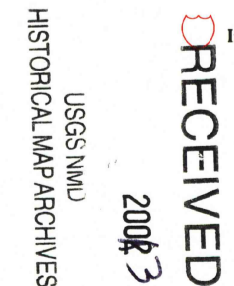


QUADRANGLE LOCATION

1	2	3	1 Vamori
4	5	6	2 South Kometlik
7	8	7	3 Aguirre Peak
8		8	4 San Agustín
			5 Capozera Peak
			6
			7
			8

ROAD CLASSIFICATION
Primary highway hard surface
Secondary highway hard surface
Light-duty road, hard or improved surface
Unimproved road

Interstate Route U.S. Route State Route



SAN MIGUEL, AZ-SON
1996

NIMA 3647 III SE-SERIES V898

