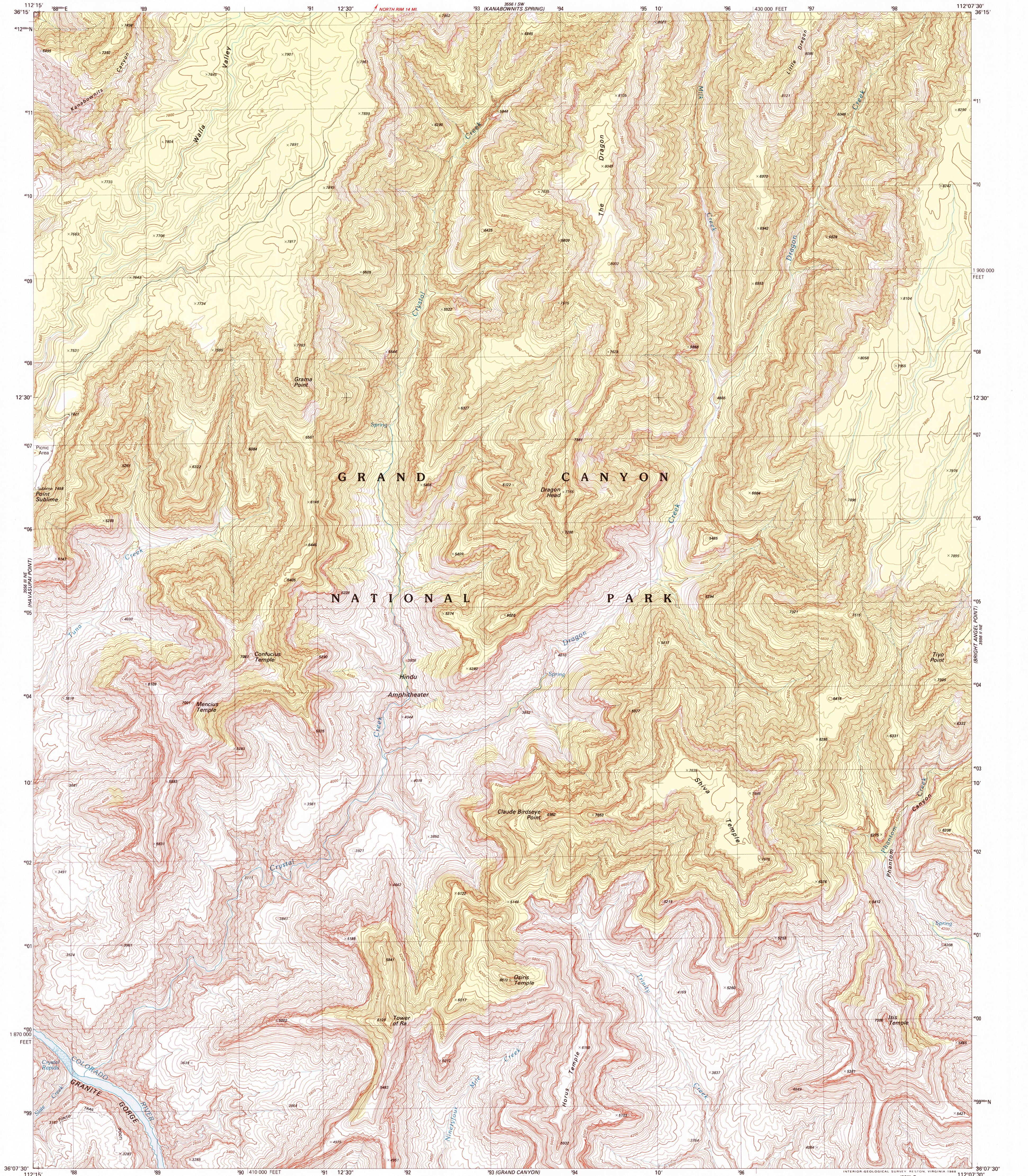


UNITED STATES
DEPARTMENT OF THE INTERIOR
GEOLOGICAL SURVEY

SHIVA TEMPLE QUADRANGLE
ARIZONA-COCONINO CO.
7.5 MINUTE SERIES (TOPOGRAPHIC)
NW 4 BRIGHT ANGEL 15' QUADRANGLE



Produced by the United States Geological Survey
Control by USGS and NOS/NOAA

Compiled by photogrammetric methods from aerial photographs
taken 1982. Field checked 1984. Map edited 1988

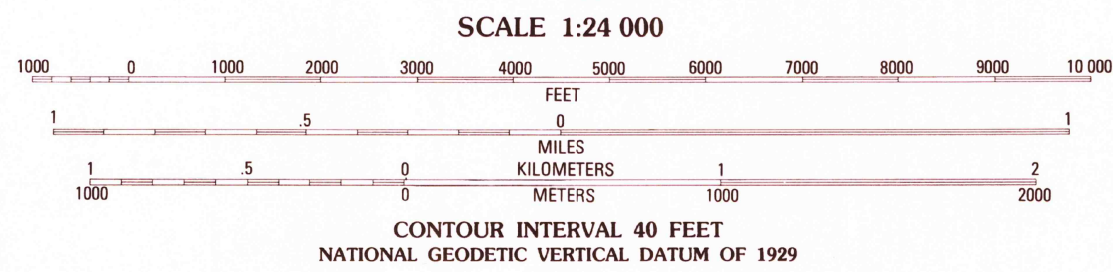
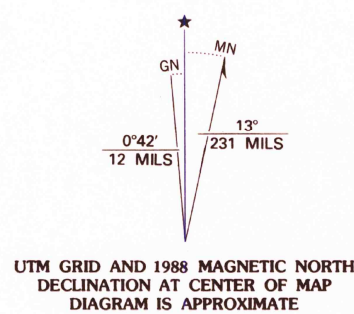
Projection and 10,000-foot grid ticks: Arizona coordinate
system, central zone (transverse Mercator)

1000-meter Universal Transverse Mercator grid, zone 12
1927 North American Datum

To place on the predicted North American Datum 1983
move the projection lines 6 meters north and
66 meters east as shown by dashed corner ticks

Land lines have not been established in this area

There may be private inholdings within the boundaries of
the National or State reservations shown on this map



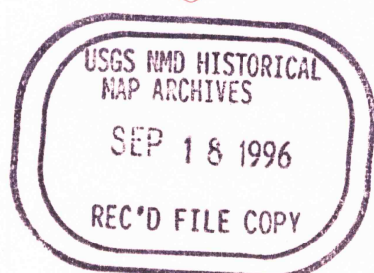
CONTOUR INTERVAL 40 FEET
NATIONAL GEODETIC VERTICAL DATUM OF 1929

THIS MAP COMPLIES WITH NATIONAL MAP ACCURACY STANDARDS
FOR SALE BY U.S. GEOLOGICAL SURVEY, DENVER, COLORADO 80225, OR RESTON, VIRGINIA 22092
A FOLDER DESCRIBING TOPOGRAPHIC MAPS AND SYMBOLS IS AVAILABLE ON REQUEST



QUADRANGLE LOCATION

ROAD CLASSIFICATION	
Primary highway, hard surface	Light-duty road, hard or improved surface
Secondary highway, hard surface	Unimproved road
Interstate Route	U. S. Route
	State Route



SHIVA TEMPLE, ARIZ.
NW 4 BRIGHT ANGEL 15' QUADRANGLE
36112-B2-TF-024

1988

DMA 3556 II NW-SERIES V798

