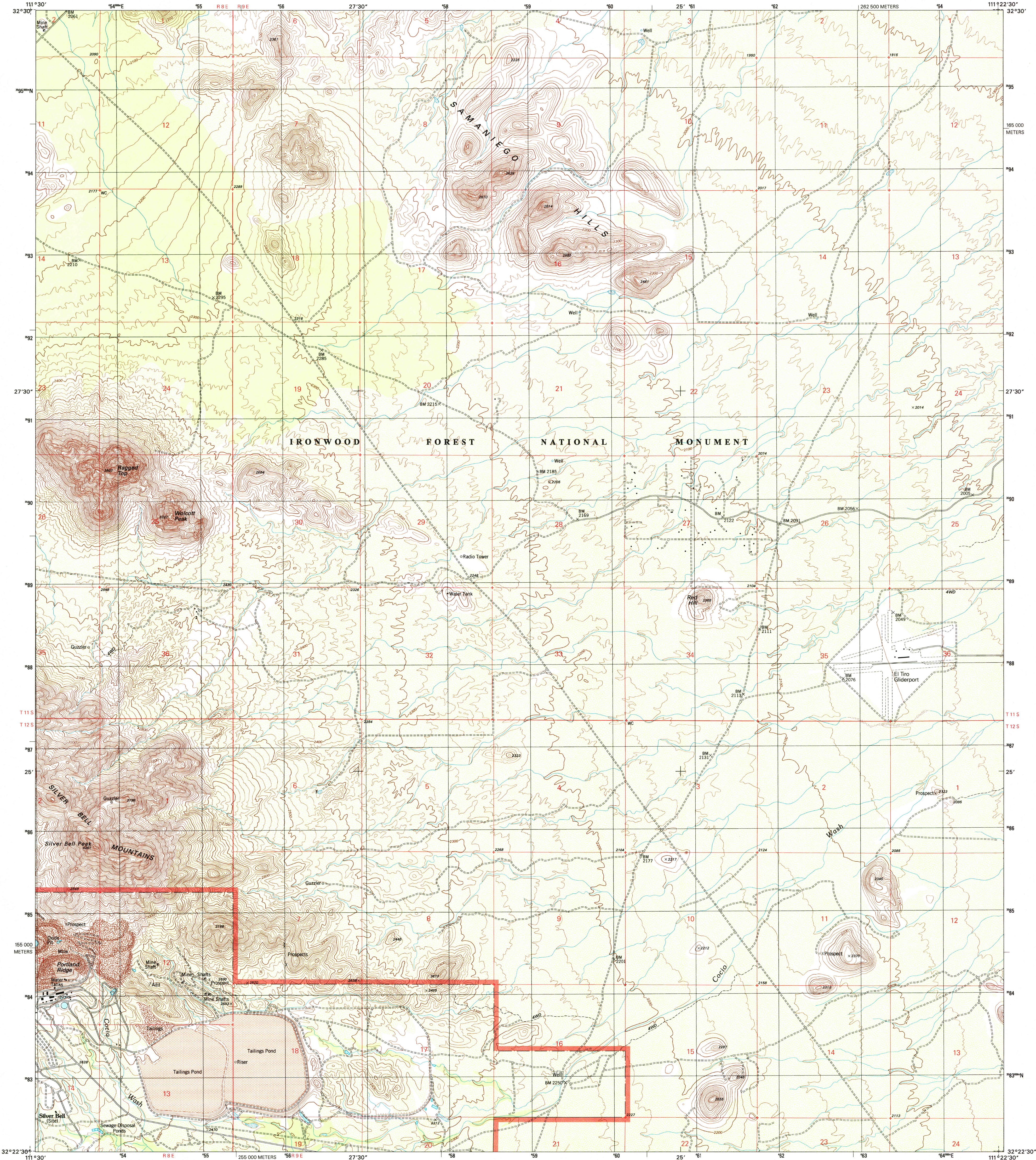


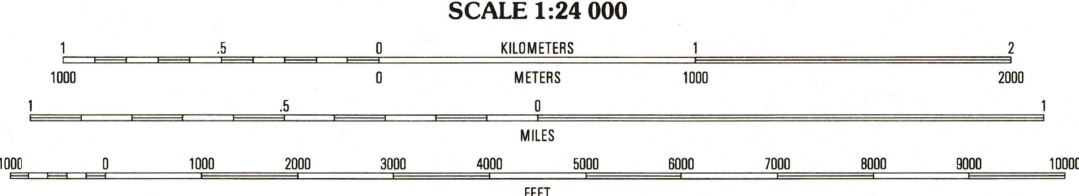
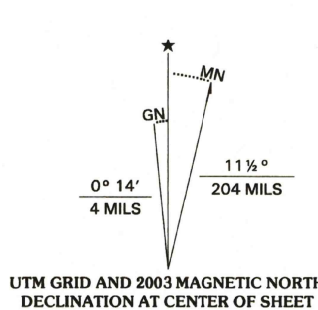


U.S. DEPARTMENT OF THE INTERIOR
U.S. GEOLOGICAL SURVEY

SILVER BELL EAST QUADRANGLE
ARIZONA-PIMA CO.
7.5-MINUTE SERIES (TOPOGRAPHIC)



Produced by the United States Geological Survey
Topography compiled 1958. Planimetry derived from imagery taken 1996 and other sources. Public Land Survey System and survey control current as of 1985. Boundaries current as of 2002
North American Datum of 1983 (NAD 83). Projection and 1000-meter grid: Universal Transverse Mercator, zone 12
2 500-meter ticks: Arizona Coordinate System of 1983 (central zone)
North American Datum of 1927 (NAD 27) is shown by dashed corner ticks. The values of the shift between NAD 83 and NAD 27 for 7.5-minute intersections are obtainable from National Geodetic Survey NADCON software
There may be private inholdings within the boundaries of the National or State reservations shown on this map
Houses of worship, schools, and other labeled buildings verified 1985



CONTOUR INTERVAL 20 FEET
NATIONAL GEODETIC VERTICAL DATUM OF 1929
(TO CONVERT ELEVATIONS TO THE NORTH AMERICAN VERTICAL DATUM OF 1988, ADD 2 FEET)
TO CONVERT FROM FEET TO METERS, MULTIPLY BY 0.3048

THIS MAP COMPLIES WITH NATIONAL MAP ACCURACY STANDARDS
FOR SALE BY U.S. GEOLOGICAL SURVEY, P.O. BOX 25286, DENVER, COLORADO 80225
A FOLDER DESCRIBING TOPOGRAPHIC MAPS AND SYMBOLS IS AVAILABLE ON REQUEST



QUADRANGLE LOCATION

1	2	3
4	5	6
7	8	9

1 Friendly Corners
2 Samaniego Hills
3 Red Rock
4 Silver Bell West
5 West of Marana
6 Kohi Kohl Hill
7 Waterman Peak
8 West of Aza

ADJOINING 7.5' QUADRANGLES

ROAD CLASSIFICATION
Primary highway
hard surface
Secondary highway
hard surface
Light-duty road, hard or
improved surface
Unimproved road

Interstate Route U.S. Route State Route

JUN 26 2003
SILVER BELL EAST, AZ
1996

NIMA 3748 IV NW-SERIES V898

