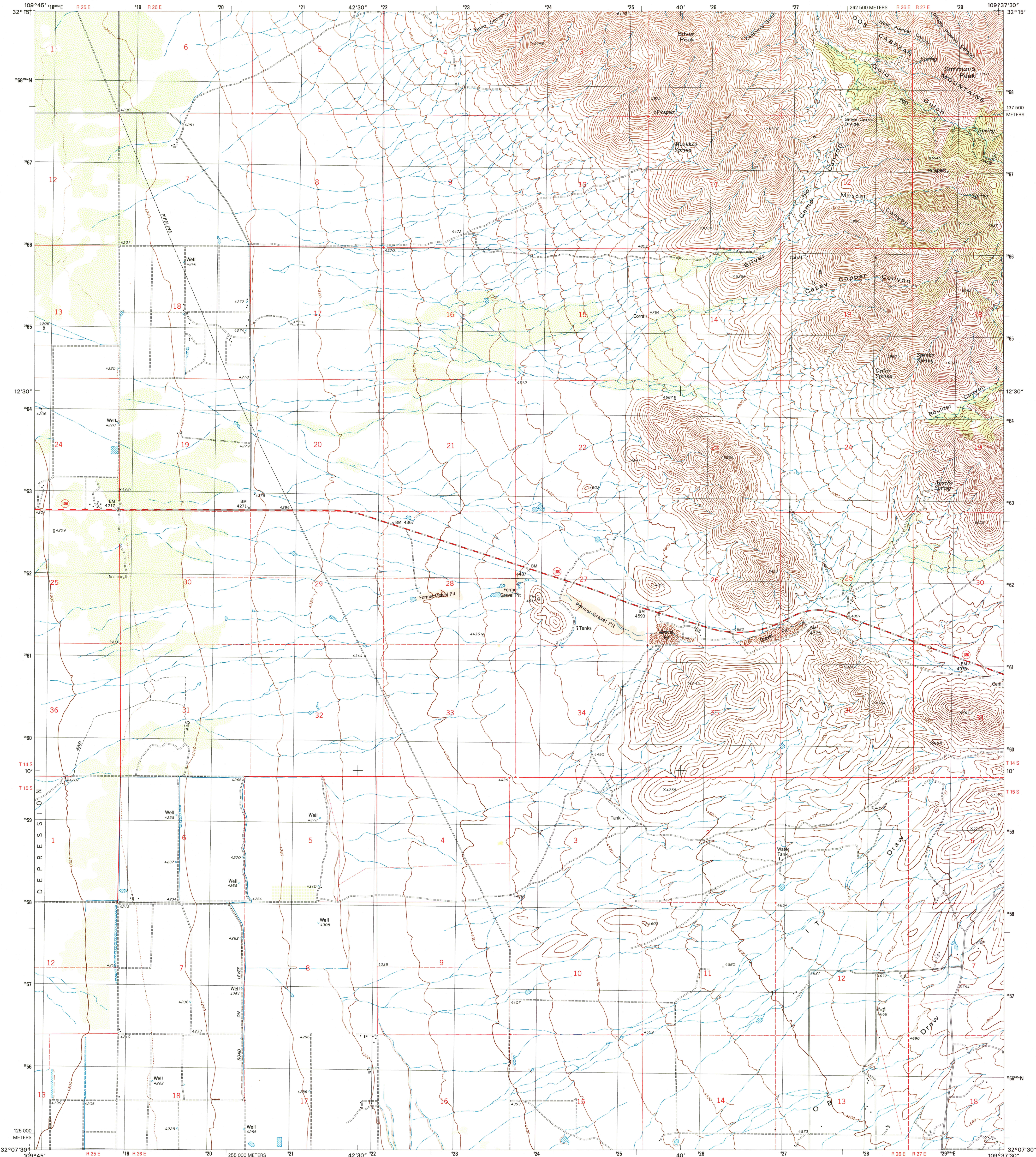




U.S. DEPARTMENT OF THE INTERIOR
U.S. GEOLOGICAL SURVEY

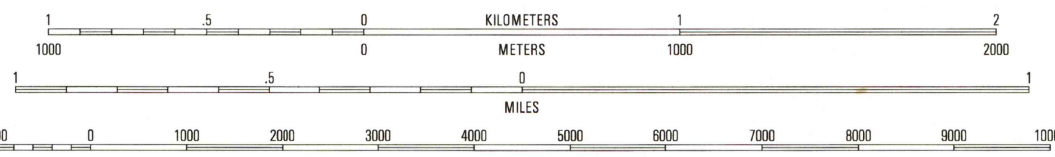
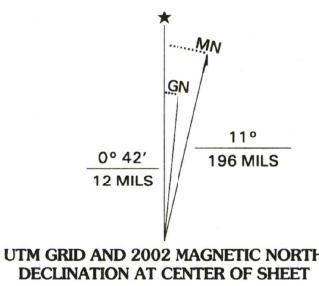
SIMMONS PEAK QUADRANGLE
ARIZONA-COCHISE CO.
7.5-MINUTE SERIES (TOPOGRAPHIC)



Produced by the United States Geological Survey
Topography compiled 1973. Planimetry derived from imagery
taken 1996 and other sources. Public Land Survey System and
survey control current as of 1974. Boundaries current as of 2001
North American Datum of 1983 (NAD 83). Projection and
1 000-meter grid: Universal Transverse Mercator, zone 12
2 500-meter ticks: Arizona Coordinate System of 1983
(east zone)
North American Datum of 1927 (NAD 27) is shown by dashed
corner ticks. The values of the shift between NAD 83 and NAD 27
for 7.5-minute intersections are obtainable from National Geodetic
Survey NADCON software
A portion of this map covers a subsidence area
Houses of worship, schools, and other labeled buildings verified 1974

RECEIVED
JAN 17 2003

USGS NMD
HISTORICAL MAP ARCHIVES



SCALE 1:24 000
SUPPLEMENTARY CONTOUR INTERVAL 20 FEET
NATIONAL GEODETIC VERTICAL DATUM OF 1929
(TO CONVERT ELEVATIONS TO THE NORTH AMERICAN VERTICAL DATUM OF 1988, ADD 3 FEET)
TO CONVERT FROM FEET TO METERS, MULTIPLY BY 0.3048

THIS MAP COMPLIES WITH NATIONAL MAP ACCURACY STANDARDS
FOR SALE BY U.S. GEOLOGICAL SURVEY, P.O. BOX 25286, DENVER, COLORADO 80225
A FOLDER DESCRIBING TOPOGRAPHIC MAPS AND SYMBOLS IS AVAILABLE ON REQUEST



QUADRANGLE LOCATION

| | | |
|---|---|---|
| 1 | 2 | 3 |
| 4 | 5 | 6 |
| 7 | 8 | 9 |

1 Wilcox North
2 Railroad Pass
3 Luera
4 Wilcox South
5 Dos Cabezas
6 Sulphur Spring
7 Dos Cabezas SW
8 Pat Hills North

ADJOINING 7.5' QUADRANGLES

ROAD CLASSIFICATION
Primary highway
hard surface
Secondary highway
hard surface
Light-duty road, hard or
improved surface
Unimproved road
Interstate Route
U.S. Route
State Route

SIMMONS PEAK, AZ
1996

NIMA 4048 II NW-SERIES V898

