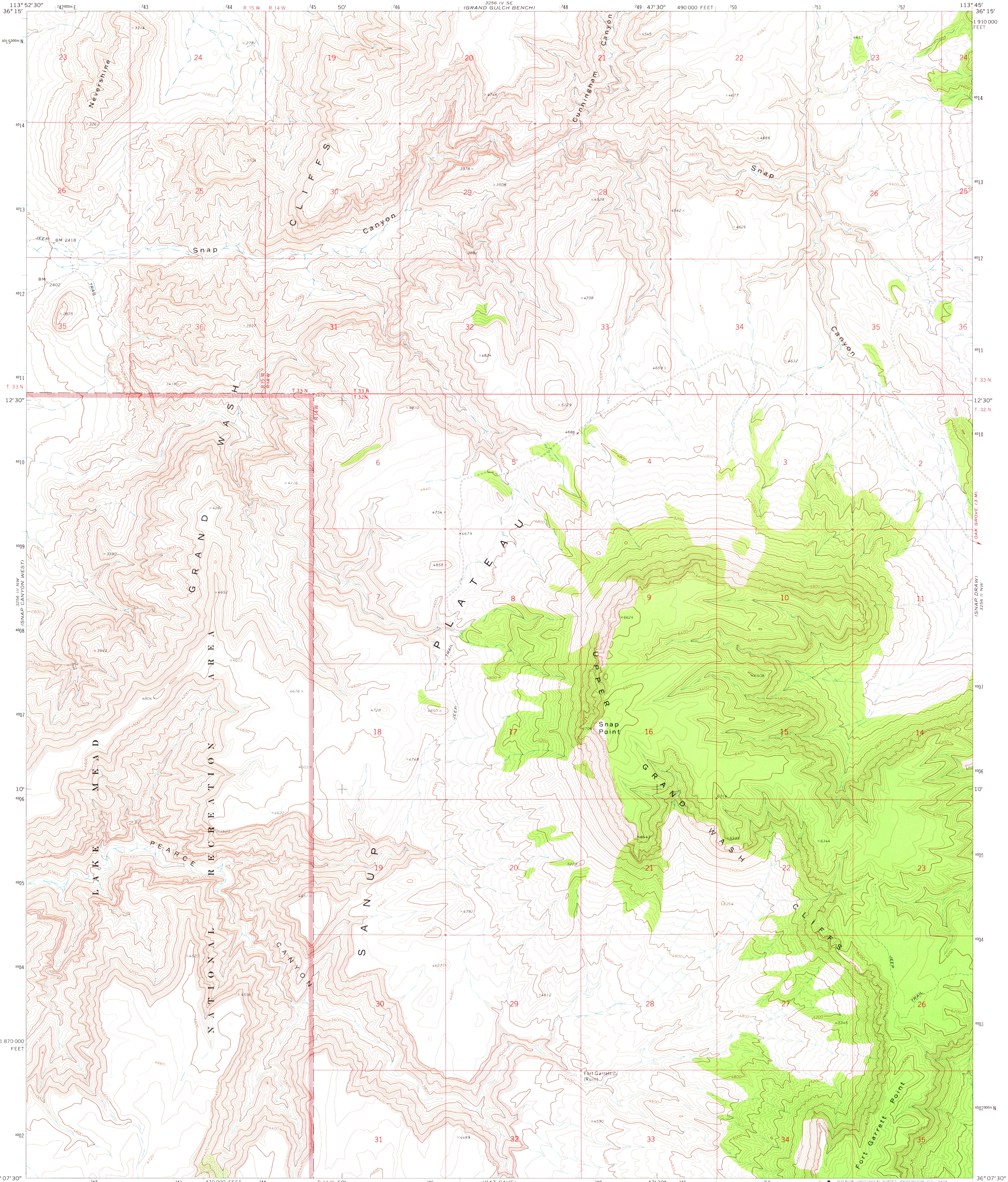
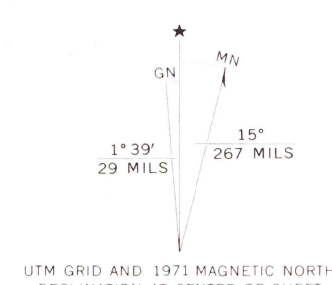


UNITED STATES
DEPARTMENT OF THE INTERIOR
GEOLOGICAL SURVEY

SNAP CANYON EAST QUADRANGLE
ARIZONA—MOHAVE CO.
7.5 MINUTE SERIES (TOPOGRAPHIC)



Mapped, edited, and published by the Geological Survey
Control by USGS and USC&GS
Topography by photogrammetric methods from aerial photographs taken 1970. Field checked 1971
Projection and 10,000-foot grid ticks: Arizona coordinate system, west zone (transverse Mercator)
1000-meter Universal Transverse Mercator grid ticks, zone 12, shown in blue. 1927 North American datum
Fine red dashed lines indicate selected fence lines
Where omitted, land lines have not been established



SCALE 1:24,000
CONTOUR INTERVAL 40 FEET
DOTTED LINES REPRESENT 20-FOOT CONTOURS
DATUM IS MEAN SEA LEVEL



- ROAD CLASSIFICATION
- Primary highway, hard surface
 - Secondary highway, hard surface
 - Light-duty road, hard or improved surface
 - Unimproved road
 - Interstate Route
 - U. S. Route
 - State Route

THIS MAP COMPLIES WITH NATIONAL MAP ACCURACY STANDARDS
FOR SALE BY U. S. GEOLOGICAL SURVEY, DENVER, COLORADO 80225, OR WASHINGTON, D. C. 20242
A FOLDER DESCRIBING TOPOGRAPHIC MAPS AND SYMBOLS IS AVAILABLE ON REQUEST

USGS
Historical File
Topographic Division

SNAP CANYON EAST, ARIZ.
N3607.5—W11345/7.5
1971
AMS 3256 III NE—SERIES V898

APR 02 1974
3245