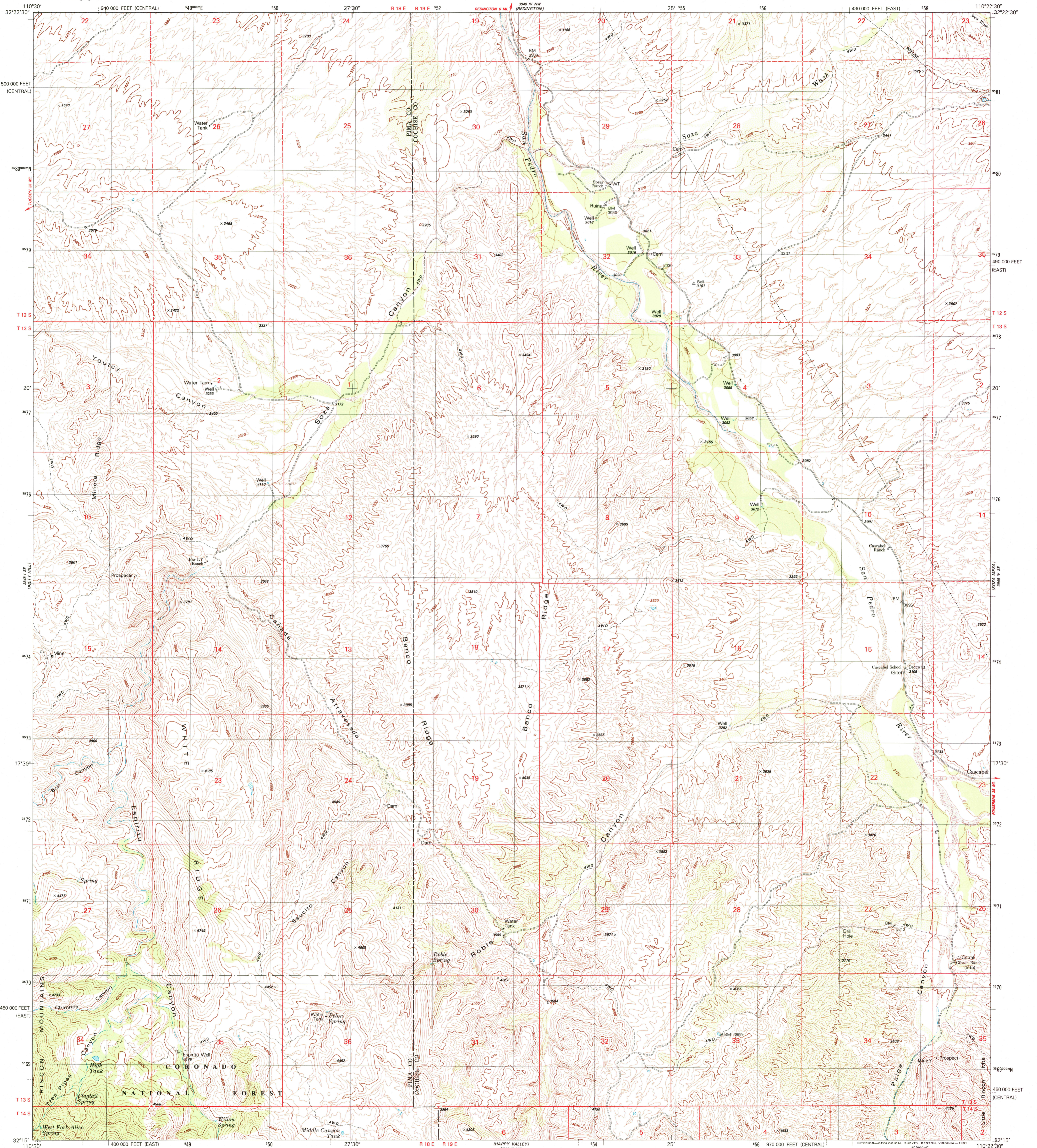




U.S. DEPARTMENT OF THE INTERIOR
U.S. GEOLOGICAL SURVEY

SOZA CANYON QUADRANGLE
ARIZONA
7.5 MINUTE SERIES (TOPOGRAPHIC)
SW/4 REDINGTON 15' QUADRANGLE



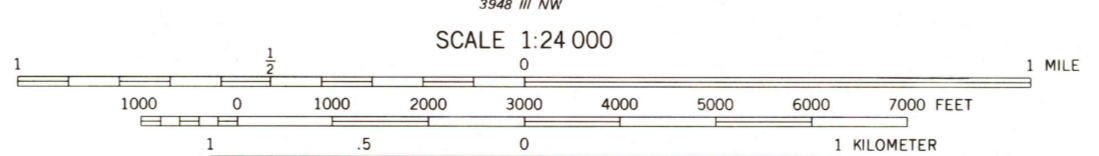
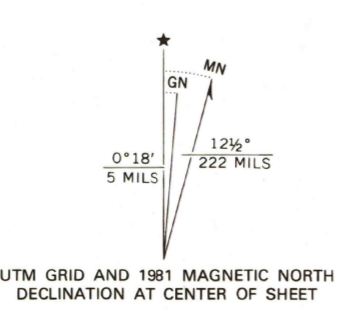
Mapped, edited, and published by the Geological Survey
Control by USGS and NOS/NOAA

Topography by photogrammetric methods from aerial photographs taken 1975. Field checked 1976. Map edited 1981

Projection: Arizona coordinate system, east zone
(transverse Mercator)
10,000-foot grid ticks based on Arizona coordinate system, east and central zones

1000-meter Universal Transverse Mercator grid, zone 12
1927 North American Datum
To place on the predicted North American Datum 1983
move the projection lines 6 meters south and
61 meters east as shown by dashed corner ticks

Where omitted, land lines have not been established
There may be private inholdings within the boundaries of
the National or State reservations shown on this map



CONTOUR INTERVAL 40 FEET
SUPPLEMENTARY CONTOUR INTERVAL 20 FEET
NATIONAL GEODETIC VERTICAL DATUM OF 1929



ROAD CLASSIFICATION
Primary highway, hard surface
Secondary highway, hard surface
Light-duty road, hard or improved surface
Unimproved road
Interstate Route
U. S. Route
State Route

RECEIVED
AUG 31 2000
SOZA CANYON, ARIZ.
SW/4 REDINGTON 15' QUADRANGLE
N3215-W11022.5/7.5
1981

THIS MAP COMPLIES WITH NATIONAL MAP ACCURACY STANDARDS
FOR SALE BY U.S. GEOLOGICAL SURVEY, P.O. BOX 25286, DENVER, COLORADO 80225
A FOLDER DESCRIBING TOPOGRAPHIC MAPS AND SYMBOLS IS AVAILABLE ON REQUEST

USGS NW/D
HISTORICAL MAP ARCHIVES
DMA 3948 IV SW-SERIES V898

