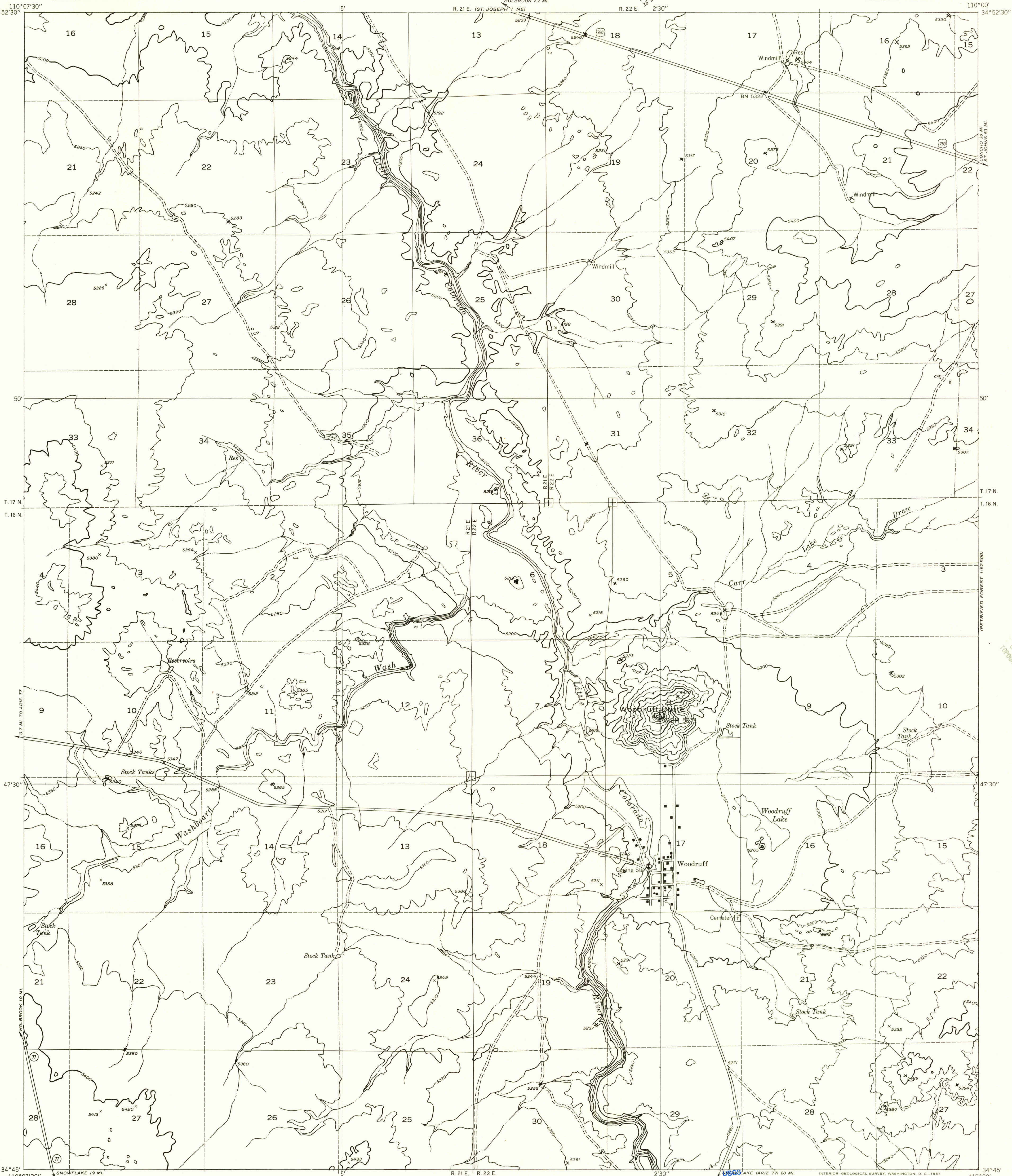


Preliminary edition  
Pending completion of 1:62,500 scale  
15 minute maps covering this area

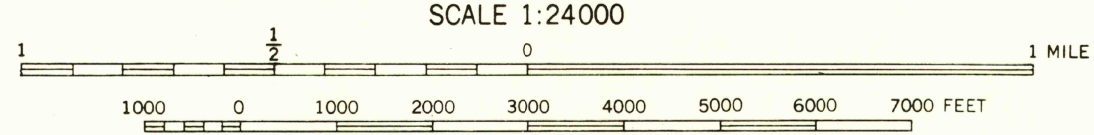
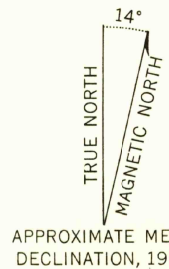
ST. JOSEPH 1 NE  
110°07'30"  
34°52'30"

110°00'  
34°52'30"



Mapped by the Geological Survey 1955

Topography by multiplex methods from  
aerial photographs taken 1953  
Dashed land lines indicate approximate locations  
Symbols and other detail herein  
drawn for 1:62 500 scale publication



CONTOUR INTERVAL 40 FEET  
DATUM IS MEAN SEA LEVEL

U.S.G.S.  
Historical File  
Topographic Division

ROAD CLASSIFICATION  
Improved ——— Unimproved - - - - -

U.S.G.S.  
FILE COPY  
TOPOGRAPHIC DIVISION

ST. JOSEPH 1 SE, ARIZ.  
N3445-W11000/7.5

APR 2 1957

2055