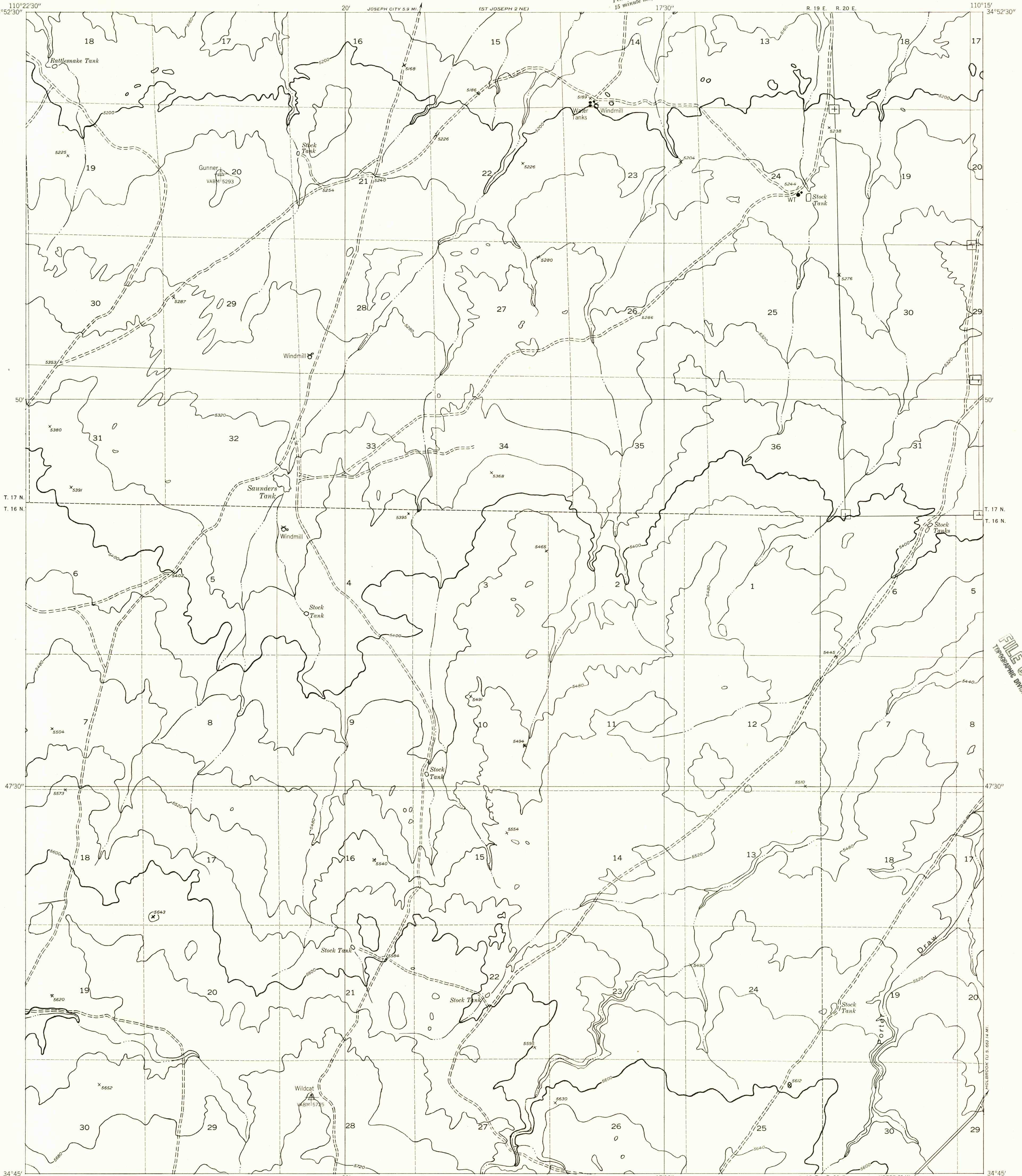


DEPARTMENT OF THE INTERIOR
GEOLOGICAL SURVEY

ST. JOSEPH 2 SE QUADRANGLE
ARIZONA—NAVAJO CO.

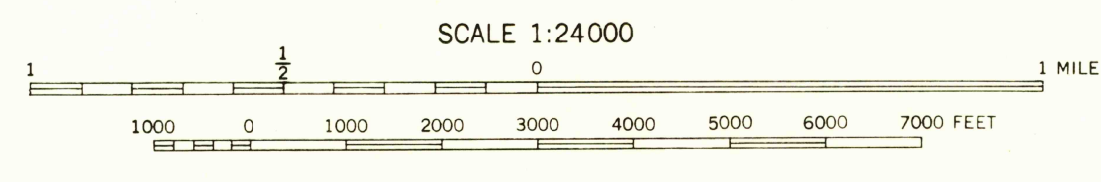
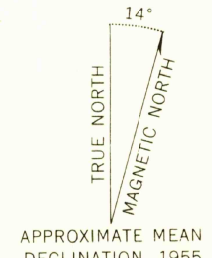
Preliminary edition
Pending completion of 1:62,500 scale
15 minute maps covering this area



110°22'30"
34°52'30"
T. 17 N.
T. 16 N.
47'30"
34°45'
110°22'30"

110°15'
34°52'30"
T. 17 N.
T. 16 N.
47'30"
34°45'
110°15'

Mapped by the Geological Survey 1955
Topography by multiplex methods from
aerial photographs taken 1953
Dashed land lines indicate approximate locations
Symbols and other detail herein
drawn for 1:62,500 scale publication



SCALE 1:24000
CONTOUR INTERVAL 40 FEET
DATUM IS MEAN SEA LEVEL

USGS
Historical File
Topographic Division

ROAD CLASSIFICATION
Improved ——— Unimproved - - - - -

U.S.G.S.
FILE COPY
TOPOGRAPHIC DIVISION

ST. JOSEPH 2 SE, ARIZ.
N3445-W11015/7.5

APR 9 1957
2645

U.S.G.S.
FILE COPY
TOPOGRAPHIC DIVISION