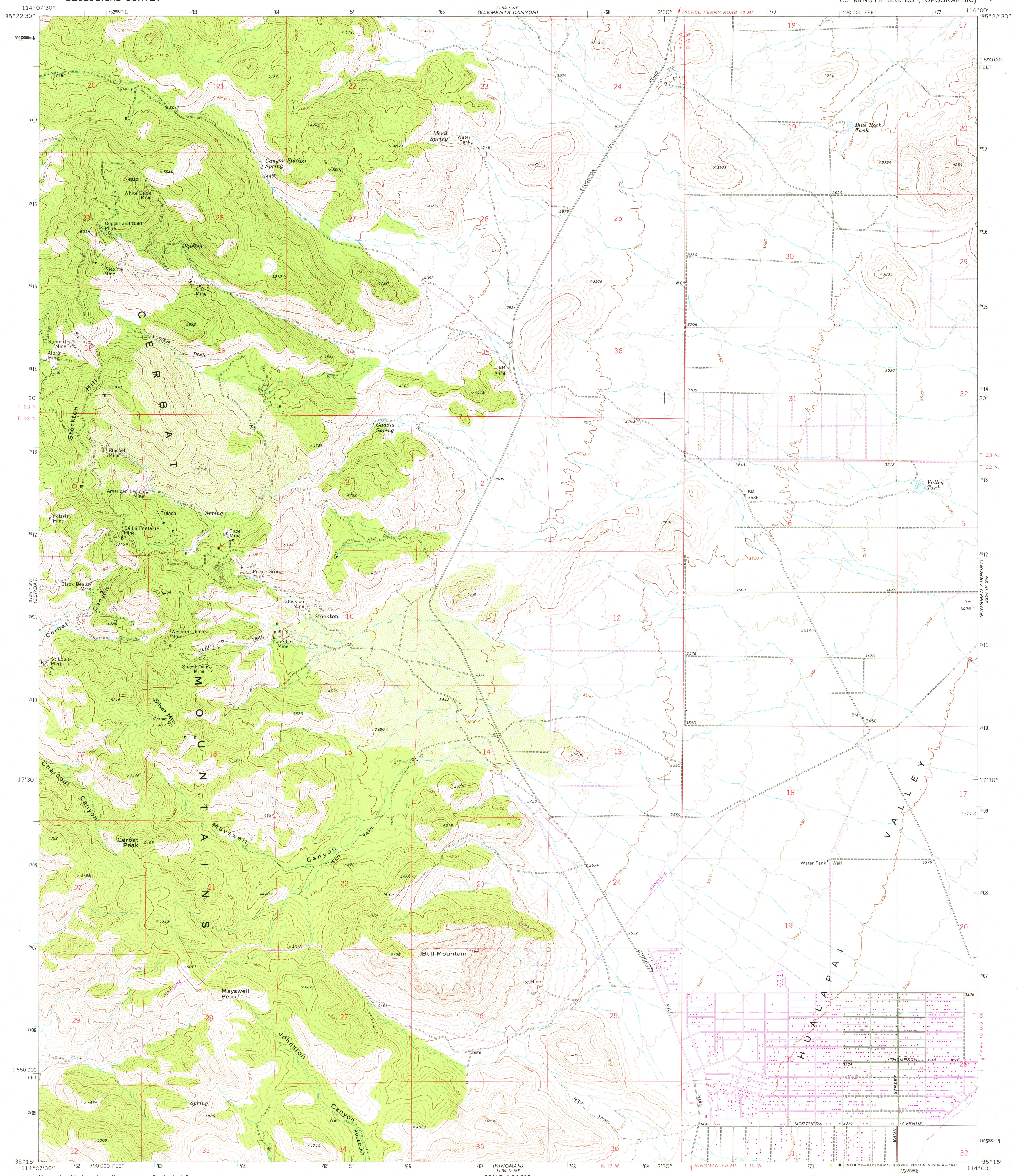
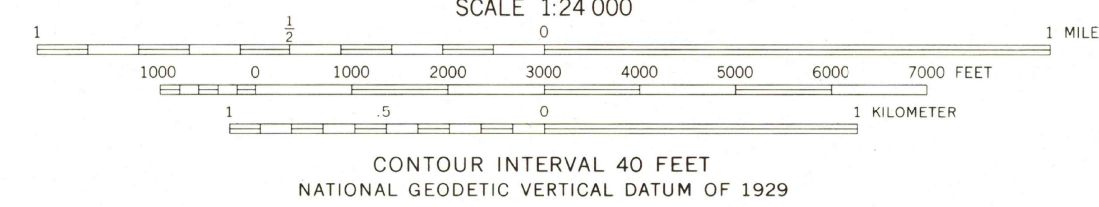
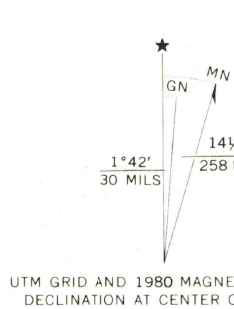


UNITED STATES
DEPARTMENT OF THE INTERIOR
GEOLOGICAL SURVEY

STOCKTON HILL QUADRANGLE
ARIZONA-MOHAVE CO.
7.5 MINUTE SERIES (TOPOGRAPHIC)



Mapped, edited, and published by the Geological Survey
Control by USGS and NOS/NOAA
Topography by photogrammetric methods from aerial
photographs taken 1967. Field checked 1968
Polyconic projection. 1927 North American datum
10,000-foot grid based on Arizona coordinate system, west zone
1000-meter Universal Transverse Mercator grid ticks,
zone 11, shown in blue
To place on the predicted North American Datum 1983
move the projection lines 2 meters north and
72 meters east as shown by dashed corner ticks
Fine red dashed lines indicate selected fence lines
Revisions shown in purple compiled by the Geological Survey from
aerial photographs taken 1978. This information not field checked
Map edited 1980



ROAD CLASSIFICATION
Light-duty _____ Unimproved dirt _____
SEP - 8 1980

THIS MAP COMPLIES WITH NATIONAL MAP ACCURACY STANDARDS
FOR SALE BY U. S. GEOLOGICAL SURVEY, DENVER, COLORADO 80225, OR RESTON, VIRGINIA 22092
A FOLDER DESCRIBING TOPOGRAPHIC MAPS AND SYMBOLS IS AVAILABLE ON REQUEST

USGS
Historical File
Topographic Division
STOCKTON HILL, ARIZ.
N3515-W11400/7.5
1988
PHOTOREVISED 1980
DMA 3154 1 SE-SERIES V898