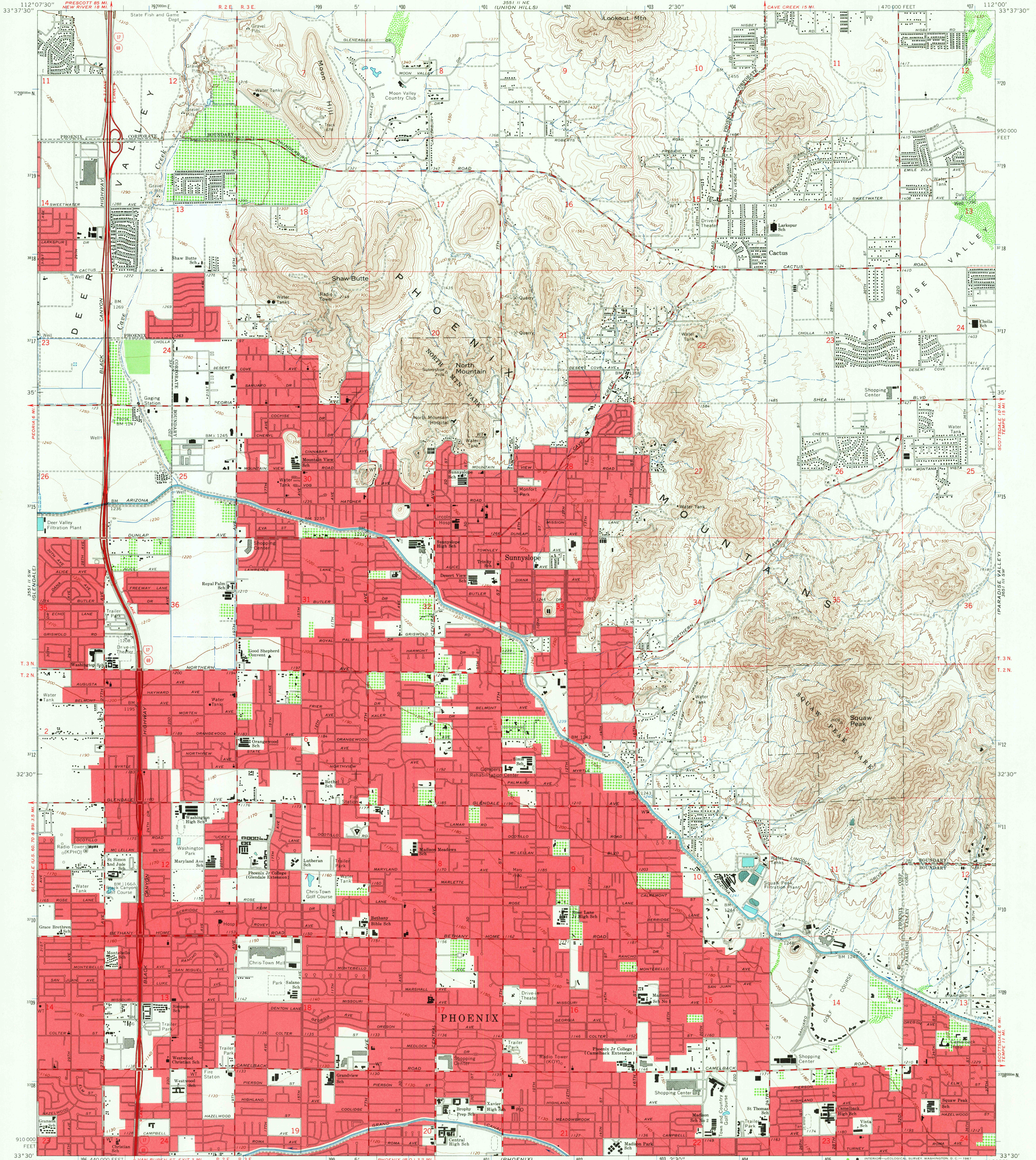
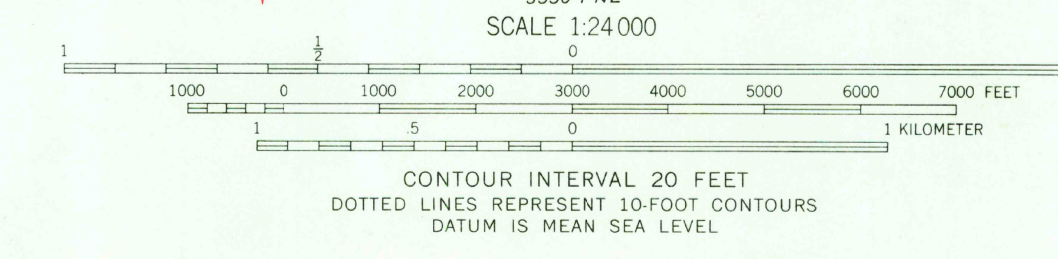
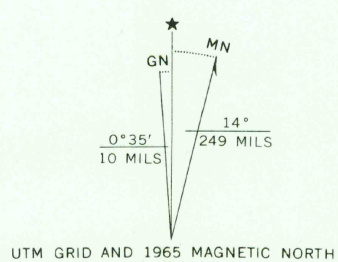


UNITED STATES
DEPARTMENT OF THE INTERIOR
GEOLOGICAL SURVEY

SUNNYSLOPE QUADRANGLE
ARIZONA-MARICOPA CO.
7.5 MINUTE SERIES (TOPOGRAPHIC)



Mapped, edited, and published by the Geological Survey
Control by USGS, USC&GS, and U.S. Bureau of Reclamation
Topography by photogrammetric methods from aerial
photographs taken 1962. Field checked 1965
Polyconic projection. 1927 North American datum
10,000-foot grid based on Arizona coordinate system, central zone
1000-meter Universal Transverse Mercator grid ticks,
zone 12, shown in blue
Red tint indicates areas in which only landmark buildings are shown



USGS
Historical File
Topographic Division



ROAD CLASSIFICATION
Heavy-duty ——— Light-duty ———
Medium-duty ——— Unimproved dirt ———
Interstate Route ——— State Route ———

U.S.G.S.
FILE COPY
TOPOGRAPHIC DIVISION

SUNNYSLOPE, ARIZ.
N3330-W11200/7.5
1965
AMS 3551 II SE-SERIES V898

THIS MAP COMPLIES WITH NATIONAL MAP ACCURACY STANDARDS
FOR SALE BY U.S. GEOLOGICAL SURVEY, DENVER, COLORADO 80225, OR WASHINGTON, D.C. 20242
A FOLDER DESCRIBING TOPOGRAPHIC MAPS AND SYMBOLS IS AVAILABLE ON REQUEST

JUL 21 1967
3245