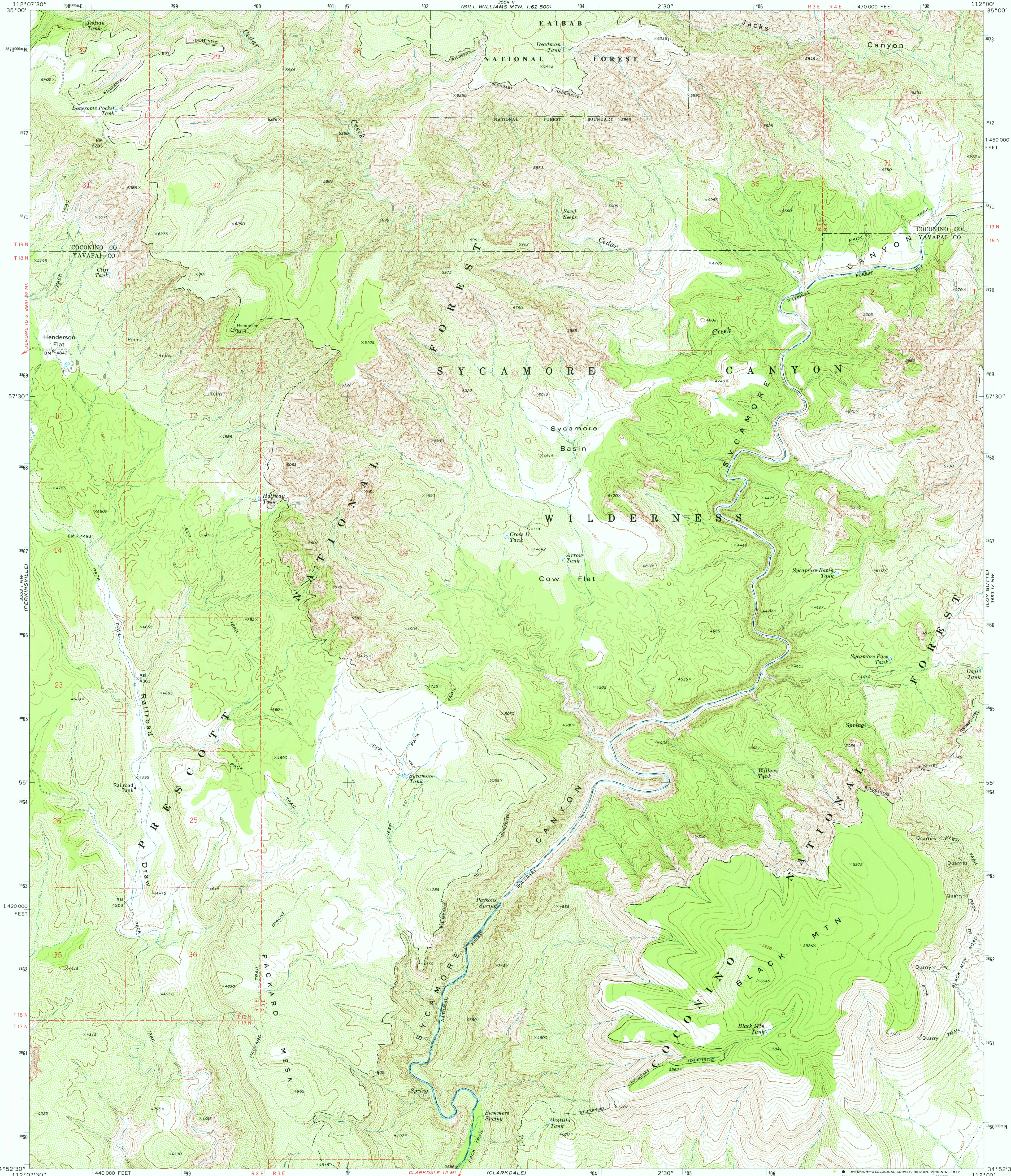
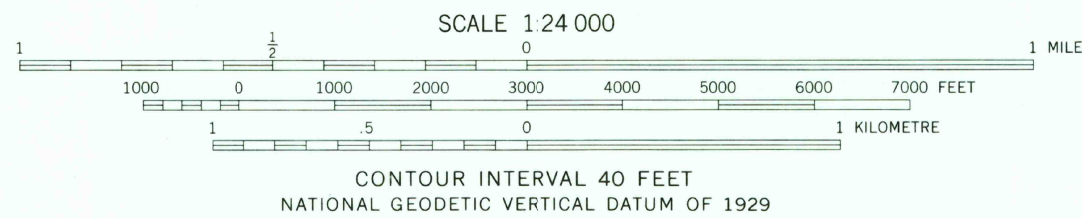
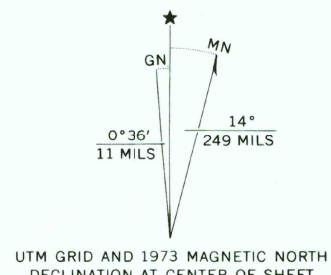


UNITED STATES
DEPARTMENT OF THE INTERIOR
GEOLOGICAL SURVEY

SYCAMORE BASIN QUADRANGLE
ARIZONA
7.5 MINUTE SERIES (TOPOGRAPHIC)
NE 1/4 CLARKDALE 15' QUADRANGLE



Mapped, edited, and published by the Geological Survey
Control by USGS and NOS/NOAA
Topography by photogrammetric methods from aerial
photographs taken 1972. Field checked 1973
Projection and 10,000-foot grid ticks: Arizona coordinate
system, central zone (transverse Mercator)
1000-metre Universal Transverse Mercator grid ticks,
zone 12, shown in blue. 1927 North American datum
National Forest shown by proclamation boundary
Private ownership not shown within National Forest
Where omitted, land lines have not been established



THIS MAP COMPLIES WITH NATIONAL MAP ACCURACY STANDARDS
FOR SALE BY U.S. GEOLOGICAL SURVEY, DENVER, COLORADO 80225, OR RESTON, VIRGINIA 22092
A FOLDER DESCRIBING TOPOGRAPHIC MAPS AND SYMBOLS IS AVAILABLE ON REQUEST



ROAD CLASSIFICATION
Primary highway, hard surface
Secondary highway, hard surface
Interstate Route
Light-duty road, hard or improved surface
Unimproved road
U. S. Route
State Route

SYCAMORE BASIN, ARIZ. JUN 08 1977
NE 1/4 CLARKDALE 15' QUADRANGLE
N 3452.5—W 11200/7.5

USGS
Historical File
Topographic Division
1973
AMS 3553 I NE—SERIES V898

2800