

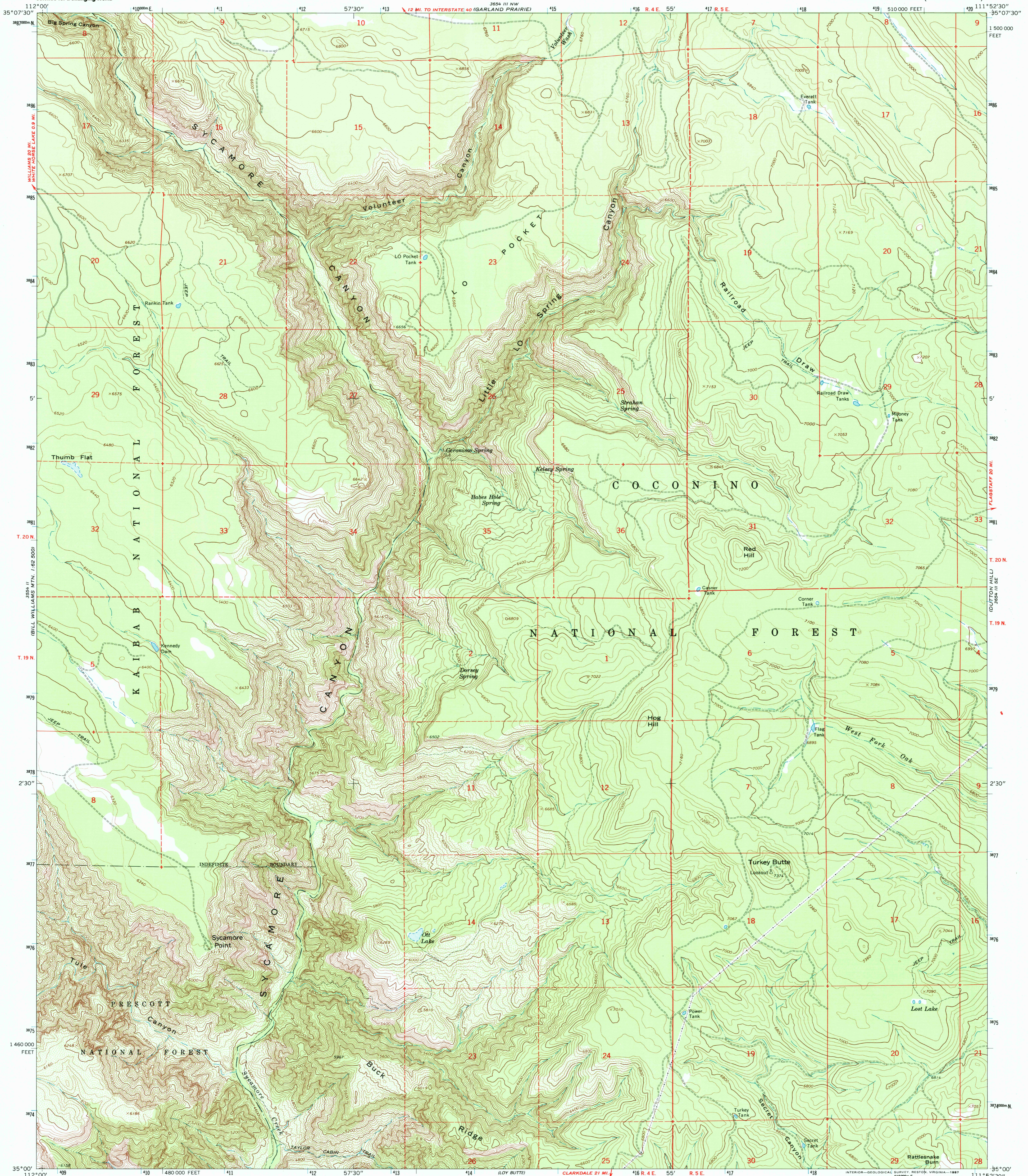
3554 II NW
1:12,500



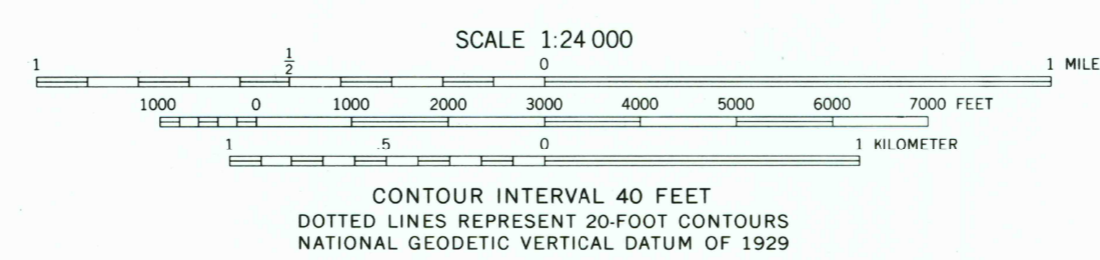
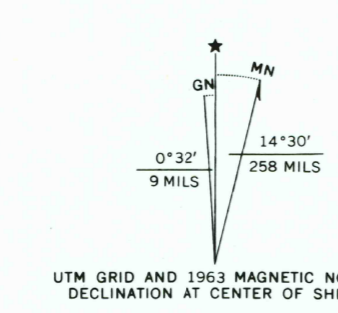
U.S. DEPARTMENT OF THE INTERIOR
U.S. GEOLOGICAL SURVEY

SYCAMORE POINT QUADRANGLE
ARIZONA-COCONINO CO.
7.5 MINUTE SERIES (TOPOGRAPHIC)

3554 II NE
1:12,500
(BELLEFONTE)



Mapped, edited, and published by the Geological Survey
Control by USGS and USC&GS
Topography by photogrammetric methods from aerial photographs taken 1959. Field checked 1963
Polyconic projection. 1927 North American datum 10,000-foot grid based on Arizona coordinate system, central zone 1000-meter Universal Transverse Mercator grid ticks, zone 12, shown in blue
To place on the predicted North American Datum 1983, move the projection lines 2 meters north and 66 meters east as shown by dashed corner ticks
Where omitted, land lines have not been established
There may be private inholdings within the boundaries of the National or State reservations shown on this map



SCALE 1:24 000
CONTOUR INTERVAL 40 FEET
DOTTED LINES REPRESENT 20-FOOT CONTOURS
NATIONAL GEODETIC VERTICAL DATUM OF 1929



ROAD CLASSIFICATION
Light duty ———— Unimproved dirt - - - - -

SYCAMORE POINT, ARIZ.
35111-A8-TF-024

THIS MAP COMPLIES WITH NATIONAL MAP ACCURACY STANDARDS
FOR SALE BY U.S. GEOLOGICAL SURVEY, P.O. BOX 25286, DENVER, COLORADO 80225
A FOLDER DESCRIBING TOPOGRAPHIC MAPS AND SYMBOLS IS AVAILABLE ON REQUEST

Map photoinspected 1980
No major culture or drainage changes observed

1963
PHOTOINSPECTED 1980
DMA 3554 III SW—SERIES V898



RECEIVED
APR 3 0 2001
HISTORICAL MAP ARCHIVES