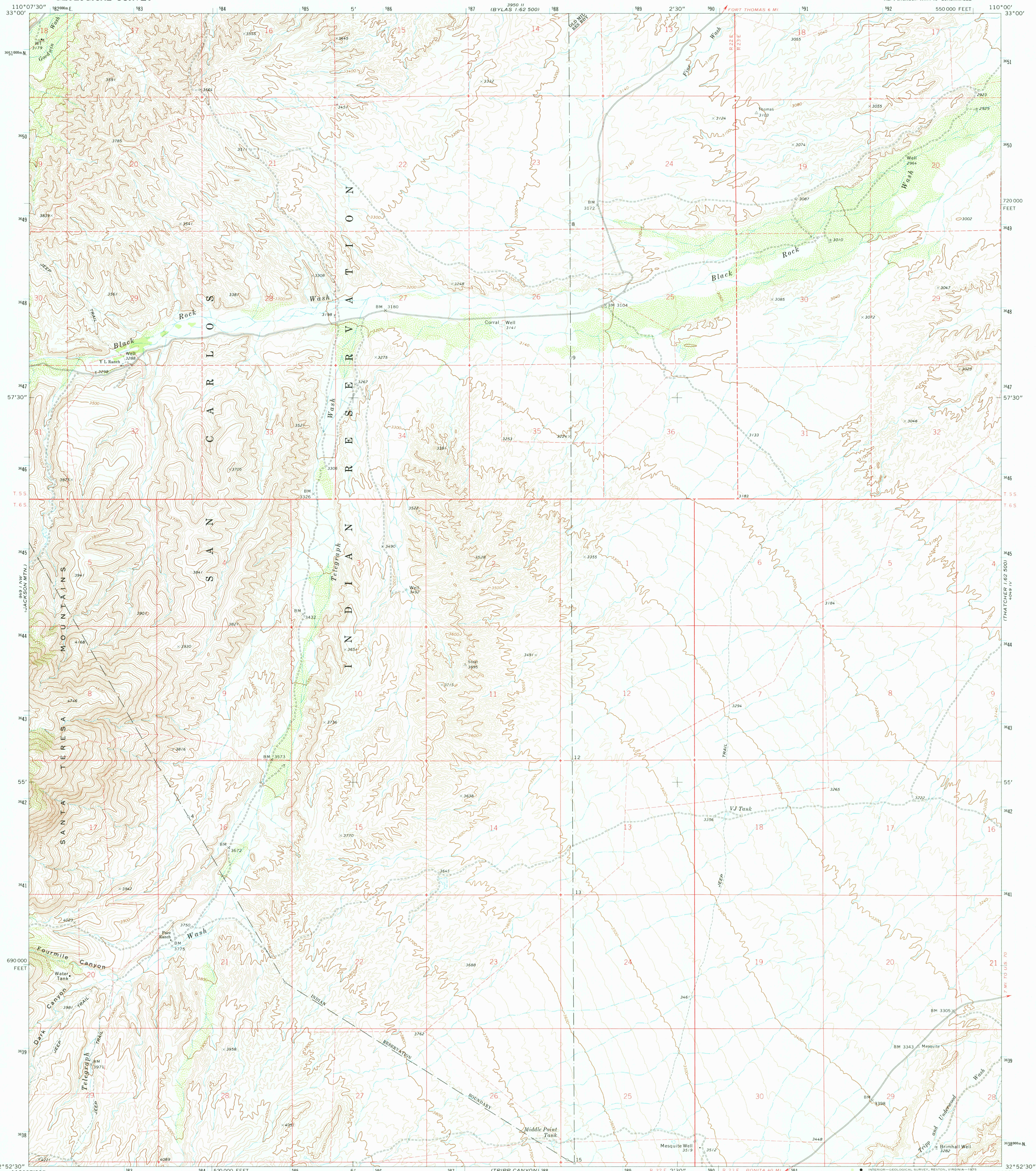
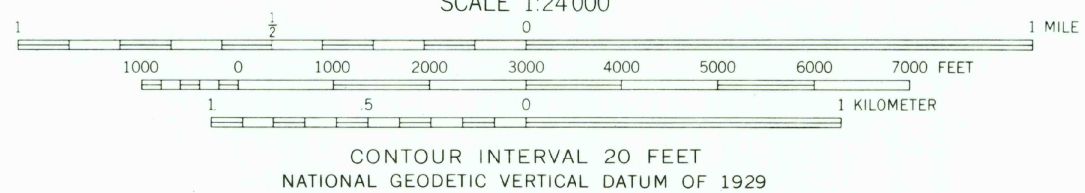
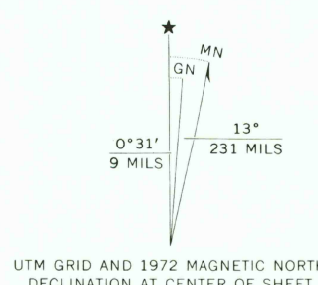


UNITED STATES
DEPARTMENT OF THE INTERIOR
GEOLOGICAL SURVEY

TELEGRAPH WASH QUADRANGLE
ARIZONA—GRAHAM CO.
7.5 MINUTE SERIES (TOPOGRAPHIC)
NE/4 JACKSON MTN. 15' QUADRANGLE



Mapped, edited, and published by the Geological Survey
Control by USGS and NOS/NOAA
Topography by photogrammetric methods from aerial
photographs taken 1971. Field checked 1972
Projection and 10,000-foot grid ticks: Arizona coordinate
system, east zone (transverse Mercator)
1000-meter Universal Transverse Mercator grid ticks,
zone 12, shown in blue. 1927 North American datum
Fine red dashed lines indicate selected fence lines



ROAD CLASSIFICATION
Primary highway, hard surface
Secondary highway, hard surface
Unimproved road
Interstate Route
U. S. Route
State Route

TELEGRAPH WASH, ARIZ.
NE/4 JACKSON MTN. 15' QUADRANGLE
N3252.5—W11000/7.5
1972
AMS 3949 I NE—SERIES V898
OCT 30 1975