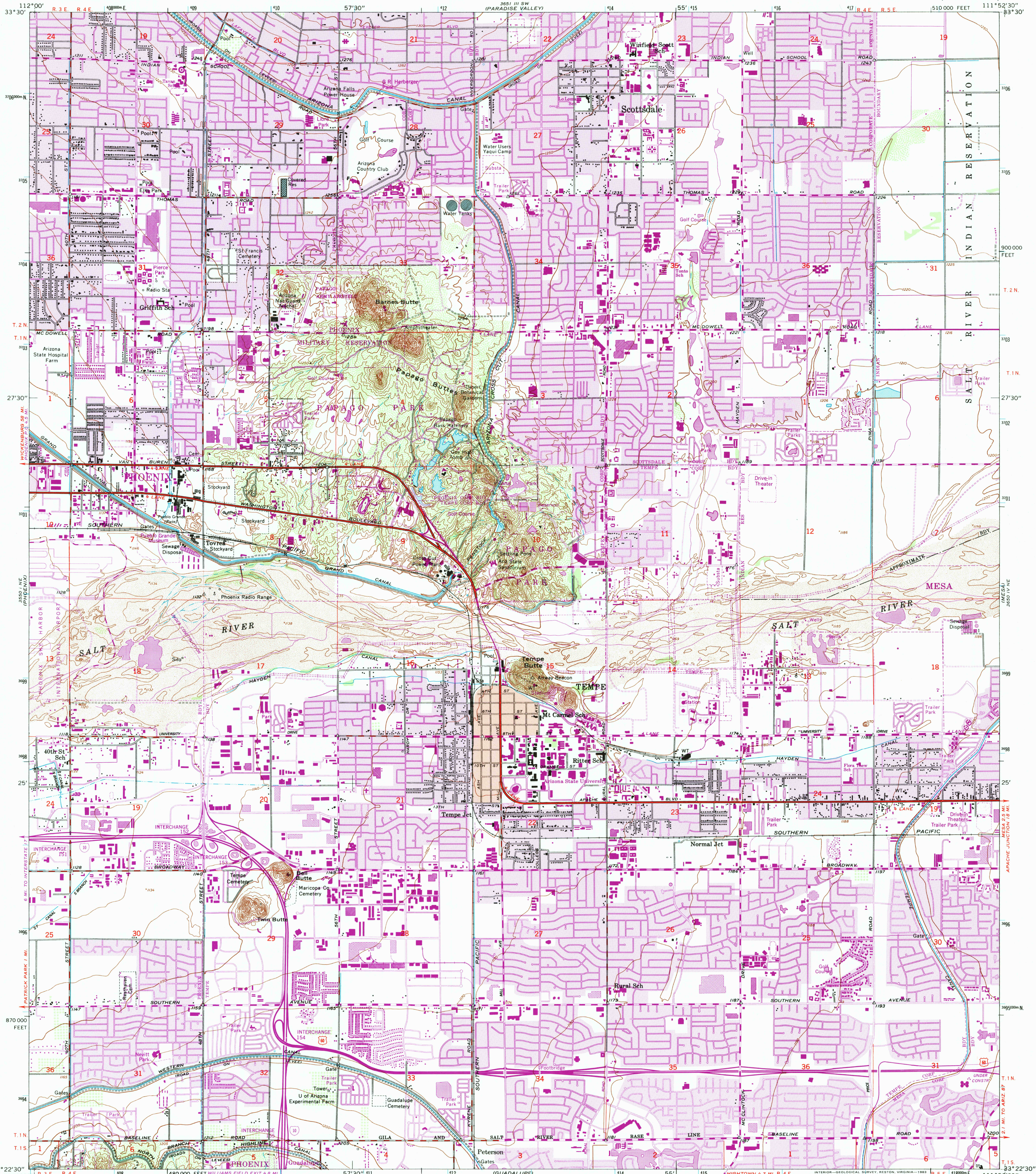


UNITED STATES
DEPARTMENT OF THE INTERIOR
GEOLOGICAL SURVEY

TEMPE QUADRANGLE
ARIZONA-MARICOPA CO.
7.5 MINUTE SERIES (TOPOGRAPHIC)



Mapped by the Army Map Service
Published for civil use by the Geological Survey

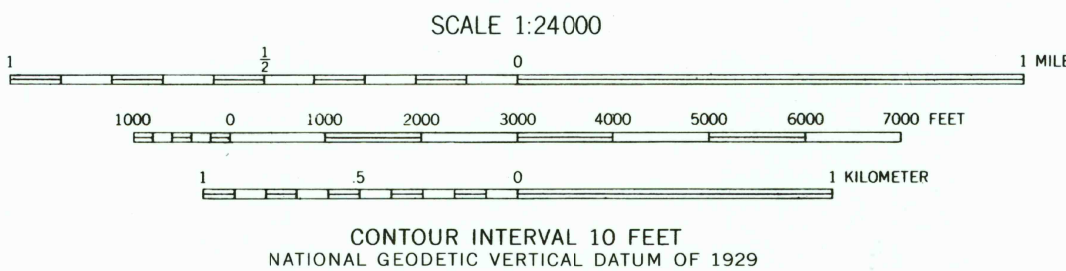
Control by USGS, NOS/NOAA and USCE

Topography by photogrammetric methods from aerial
photographs taken 1951. Field checked 1952

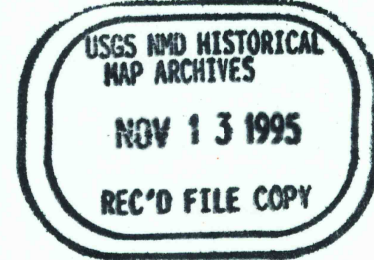
Polyconic projection, 10,000-foot grid ticks based on
Arizona coordinate system, central zone
1000-meter Universal Transverse Mercator grid ticks,
zone 12, shown in blue. 1927 North American Datum
To place on the predicted North American Datum 1983
move the projection lines 2 meters south and
65 meters east as shown by dashed corner ticks

Red tint indicates area in which only landmark buildings are shown
There may be private inholdings within the boundaries of
the National or State reservations shown on this map

Revisions shown in purple and woodland compiled by the
Geological Survey from aerial photographs taken 1978 and
other sources. This information not field checked
Map edited 1982
Purple tint indicates extension of urban areas



ROAD CLASSIFICATION	
Primary highway, all weather, hard surface	Light-duty road, all weather, improved surface
Secondary highway, all weather, hard surface	Unimproved road, fair or dry weather
Interstate Route	U.S. Route
	State Route



TEMPE, ARIZ.
N3322.5-W1152.5/7.5
1952
PHOTOREVISED 1982
DMA 3650 IV NW-SERIES Y898

