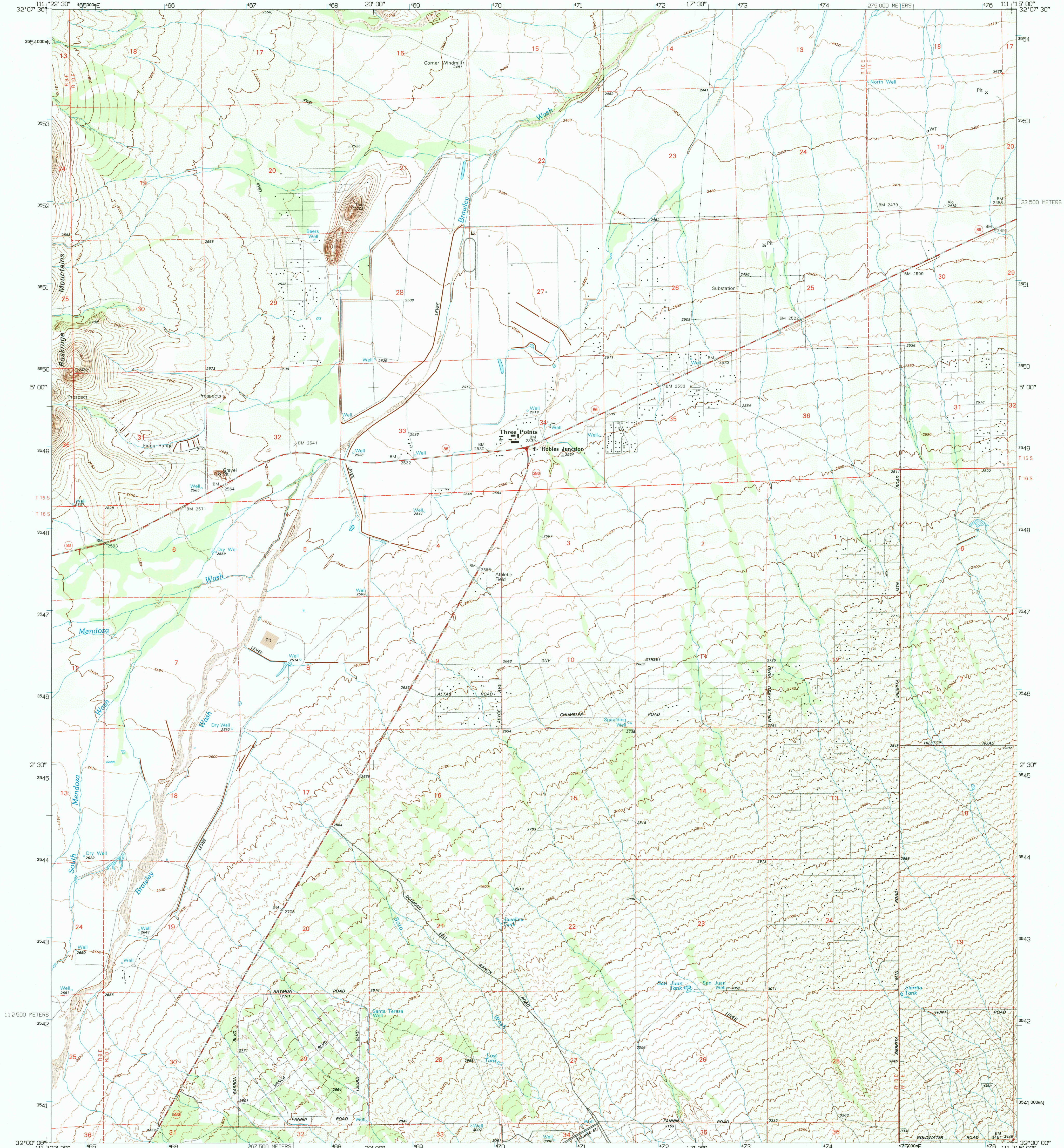


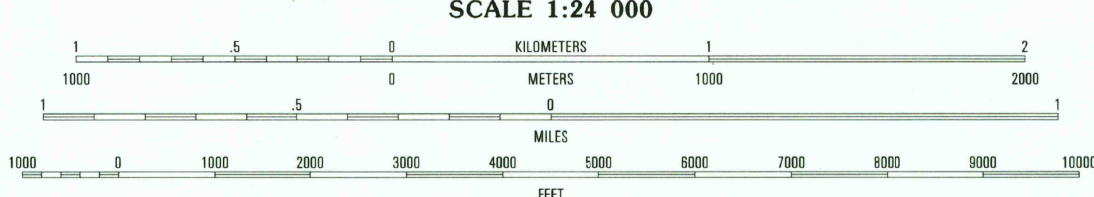
UNITED STATES  
DEPARTMENT OF THE INTERIOR  
GEOLOGICAL SURVEY

THREE POINTS QUADRANGLE  
ARIZONA-PIMA CO.  
7.5-MINUTE SERIES (TOPOGRAPHIC)



Produced by the United States Geological Survey  
Control by USGS and NOS/NOAA  
Compiled from imagery dated 1974. Revised from imagery dated 1992. FLS and survey control current as of 1995. Map edited 1995. Contours and land elevations have not been revised and may conflict with other content.  
North American Datum of 1983 (NAD 83). Projection and blue 1000-meter ticks: Universal Transverse Mercator, zone 12 2500-meter ticks: Arizona Coordinate System of 1983 (central zone).  
North American Datum of 1927 (NAD 27) is shown by dashed corner ticks. The values of the shift between NAD 83 and NAD 27 for 7.5-minute intersections are obtainable from National Geodetic Survey NADCON software.  
Fine red dashed lines indicate selected fence and field lines where generally visible on aerial photographs. This information is unchecked.

UTM GRID AND 1995 MAGNETIC NORTH  
DECLINATION AT CENTER OF SHEET



CONTOUR INTERVAL 10 FEET  
NATIONAL GEODETIC VERTICAL DATUM OF 1929  
TO CONVERT FEET TO METERS MULTIPLY BY 0.3048  
TO CONVERT METERS TO FEET MULTIPLY BY 3.2808

THIS MAP COMPLIES WITH NATIONAL MAP ACCURACY STANDARDS  
FOR SALE BY U.S. GEOLOGICAL SURVEY  
DENVER, COLORADO 80225, OR RESTON, VIRGINIA 22092  
A FOLDER DESCRIBING TOPOGRAPHIC MAPS AND SYMBOLS IS AVAILABLE ON REQUEST



QUADRANGLE LOCATION

1	2	3
4	5	6
7	8	9

1 La Tortuga Butte  
2 Cocorac Butte  
3 Brown Mountain  
4 San Pedro  
5 San Xavier Mission SW  
6 Palo Alto Ranch  
7 Stevens Mountain  
8 Sananigo Peak

U.S. GEOLOGICAL SURVEY  
OCT 04 1995  
REC'D FILE COPY

ROAD CLASSIFICATION  
Primary highway  
hard surface .....  
Secondary highway  
hard surface .....  
Light-duty road, hard or  
improved surface .....  
Unimproved road .....  
Interstate Route  
U.S. Route  
State Route

THREE POINTS, AZ  
32111-A3-TF-024

1992

DMA 3748 III SE-SERIES V898

ISBN 0-607-01096-7  
9 780607 010961