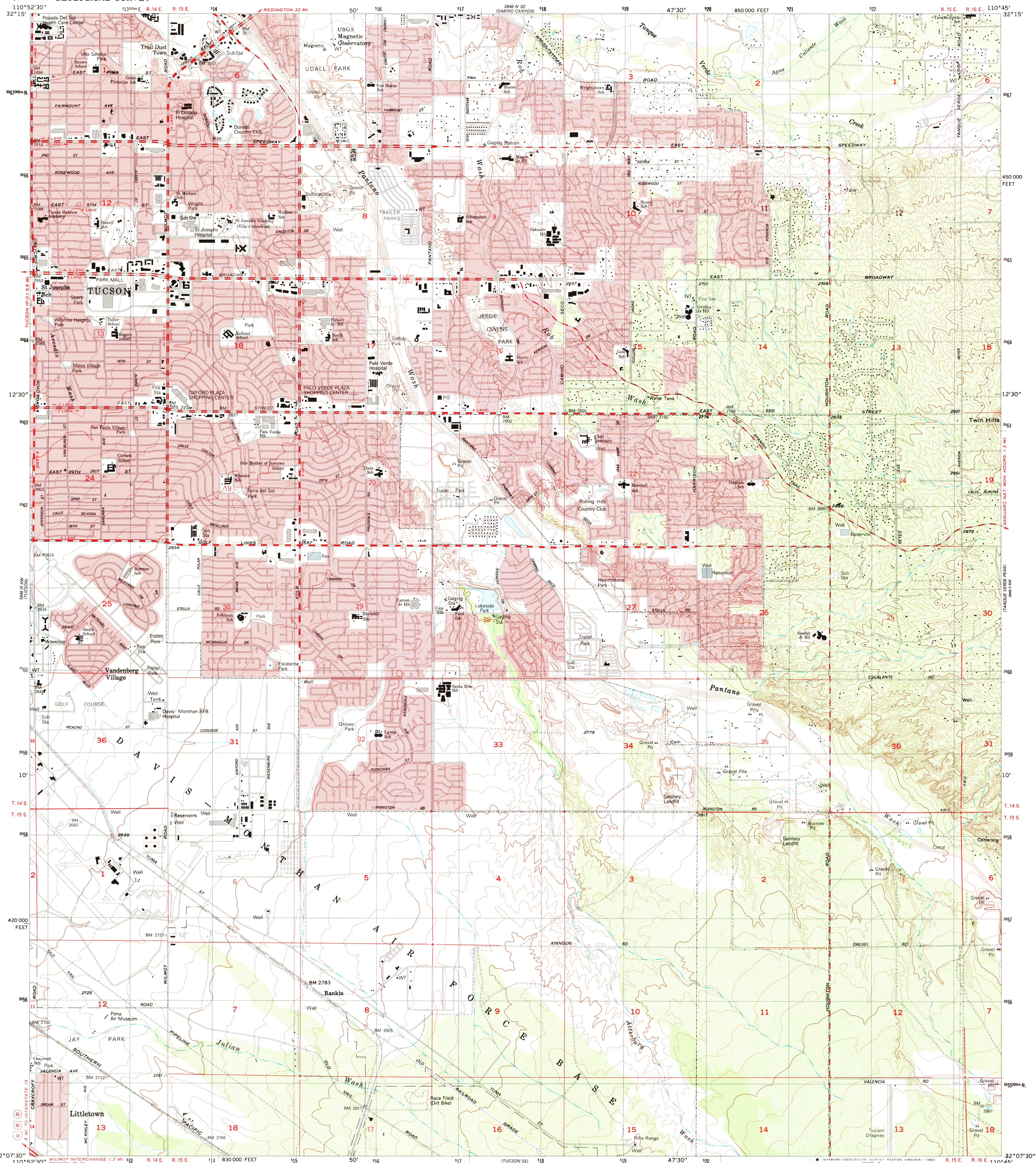


UNITED STATES
DEPARTMENT OF THE INTERIOR
GEOLOGICAL SURVEY

TUCSON EAST QUADRANGLE
ARIZONA—PIMA CO.
7.5 MINUTE SERIES (TOPOGRAPHIC)



Mapped, edited, and published by the Geological Survey

Control by USGS and NOS/NOAA

Topography by photogrammetric methods from aerial photographs taken 1954. Field checked 1957
Revised from aerial photographs taken 1980
Limited field check 1981. Map edited 1983

Projection and 10,000-foot grid ticks: Arizona coordinate system, central zone (transverse Mercator)
1000-meter Universal Transverse Mercator grid, zone 12
1927 North American Datum
To place on the predicted North American Datum 1983 move the projection lines 6 meters south and 62 meters east as shown by dashed corner ticks

Red tint indicates area in which only landmark buildings are shown
There may be private inholdings within the boundaries of the National or State Reservations shown on this map

UTM GRID AND 1983 MAGNETIC NORTH
DECLINATION AT CENTER OF SHEET

SCALE 1:24 000
1 000 0 1000 2000 3000 4000 5000 6000 7000 FEET
1 0 5 0 1 KILOMETER
CONTOUR INTERVAL 10 FEET
NATIONAL GEODETIC VERTICAL DATUM OF 1929



ROAD CLASSIFICATION
Heavy-duty ——— Light-duty ———
Medium-duty ——— Unimproved dirt ———
Interstate Route U.S. Route State Route
NOV 15 1983

TUCSON EAST, ARIZ.
N3207.5—W11045.7.5

1983

DMA 3848 III NE—SERIES V989

THIS MAP COMPLIES WITH NATIONAL MAP ACCURACY STANDARDS
FOR SALE BY U.S. GEOLOGICAL SURVEY, DENVER, COLORADO 80225, OR RESTON, VIRGINIA 22092
A FOLDER DESCRIBING TOPOGRAPHIC MAPS AND SYMBOLS IS AVAILABLE ON REQUEST