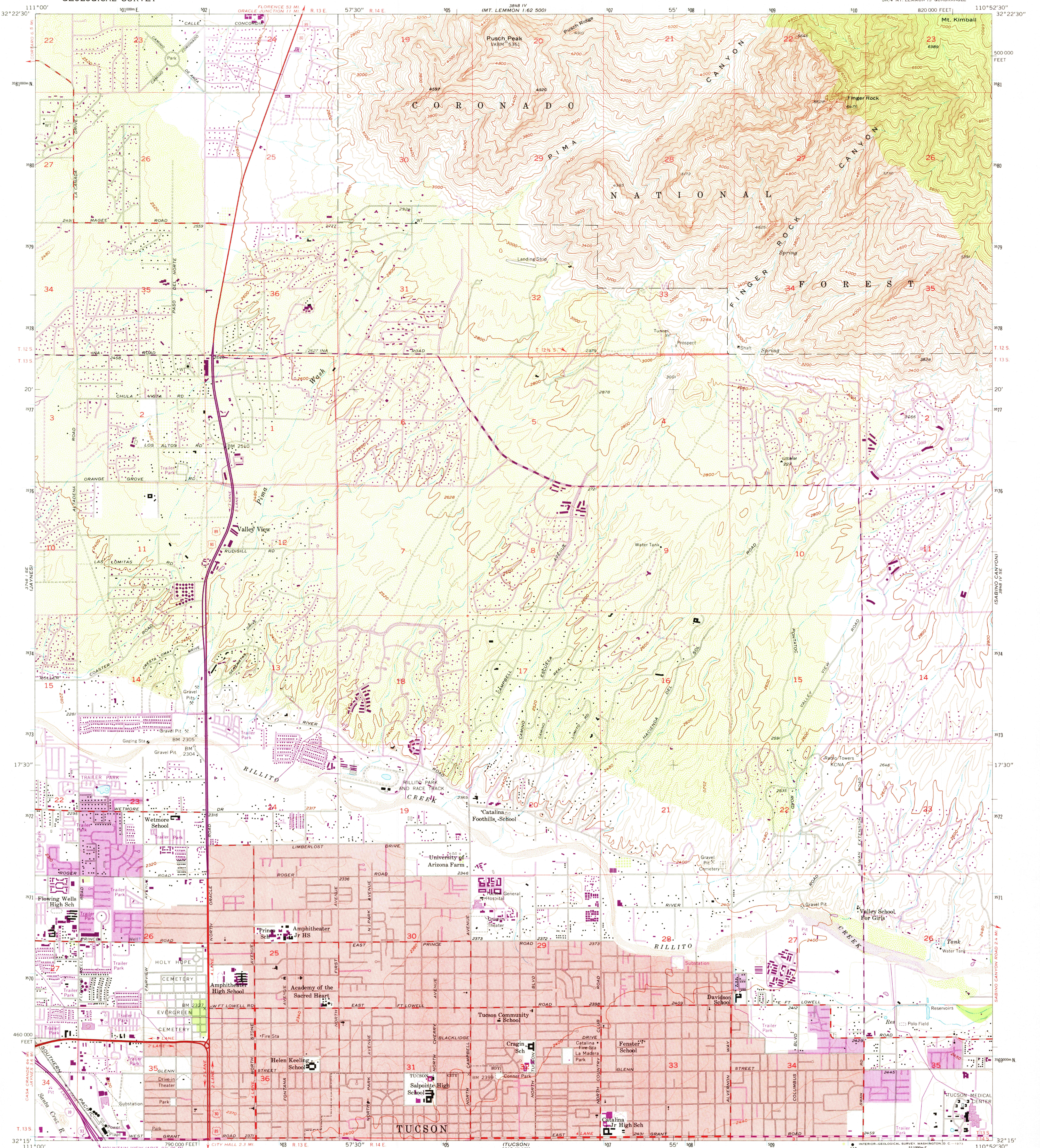


UNITED STATES  
DEPARTMENT OF THE INTERIOR  
GEOLOGICAL SURVEY

TUCSON NORTH QUADRANGLE  
ARIZONA—PIMA CO.  
7.5 MINUTE SERIES (TOPOGRAPHIC)  
SW/4 MT. LEMMON 15' QUADRANGLE



Mapped, edited, and published by the Geological Survey

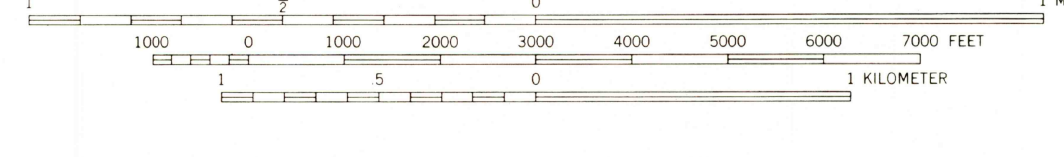
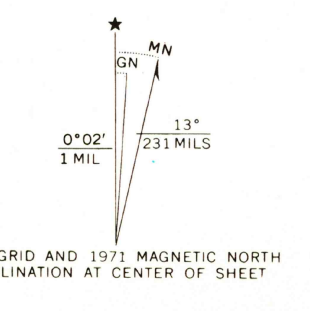
Control by USGS, USC&GS, and USCE  
Topography from aerial photographs by Kelsh plotter  
and by planetable surveys 1957. Aerial photographs taken 1954

Polyconic projection. 1927 North American datum  
10,000-foot grid based on Arizona coordinate system,  
central zone  
1000-meter Universal Transverse Mercator grid ticks,  
zone 12, shown in blue

Red tint indicates areas in which only  
landmark buildings are shown

Revisions shown in purple compiled from aerial photographs  
taken 1971. This information not field checked

Purple tint indicates extension of urban areas



CONTOUR INTERVAL 40 FEET  
DASHED LINES REPRESENT 10-FOOT CONTOURS  
DATUM IS MEAN SEA LEVEL

THIS MAP COMPLIES WITH NATIONAL MAP ACCURACY STANDARDS  
FOR SALE BY U. S. GEOLOGICAL SURVEY, DENVER, COLORADO 80225 OR WASHINGTON, D. C. 20242  
A FOLDER DESCRIBING TOPOGRAPHIC MAPS AND SYMBOLS IS AVAILABLE ON REQUEST



ROAD CLASSIFICATION

Heavy-duty	Light-duty
Medium-duty	Unimproved dirt
U. S. Route	State Route
Interstate Route	

USGS  
Historical File  
Topographic Division

TUCSON NORTH, ARIZ.  
SW/4 MT. LEMMON 15' QUADRANGLE  
N3215—W11052:5/7.5  
1957  
PHOTOREVISED 1971  
AMS 3848 IV SW—SERIES V898

JUN 4 1973

4285