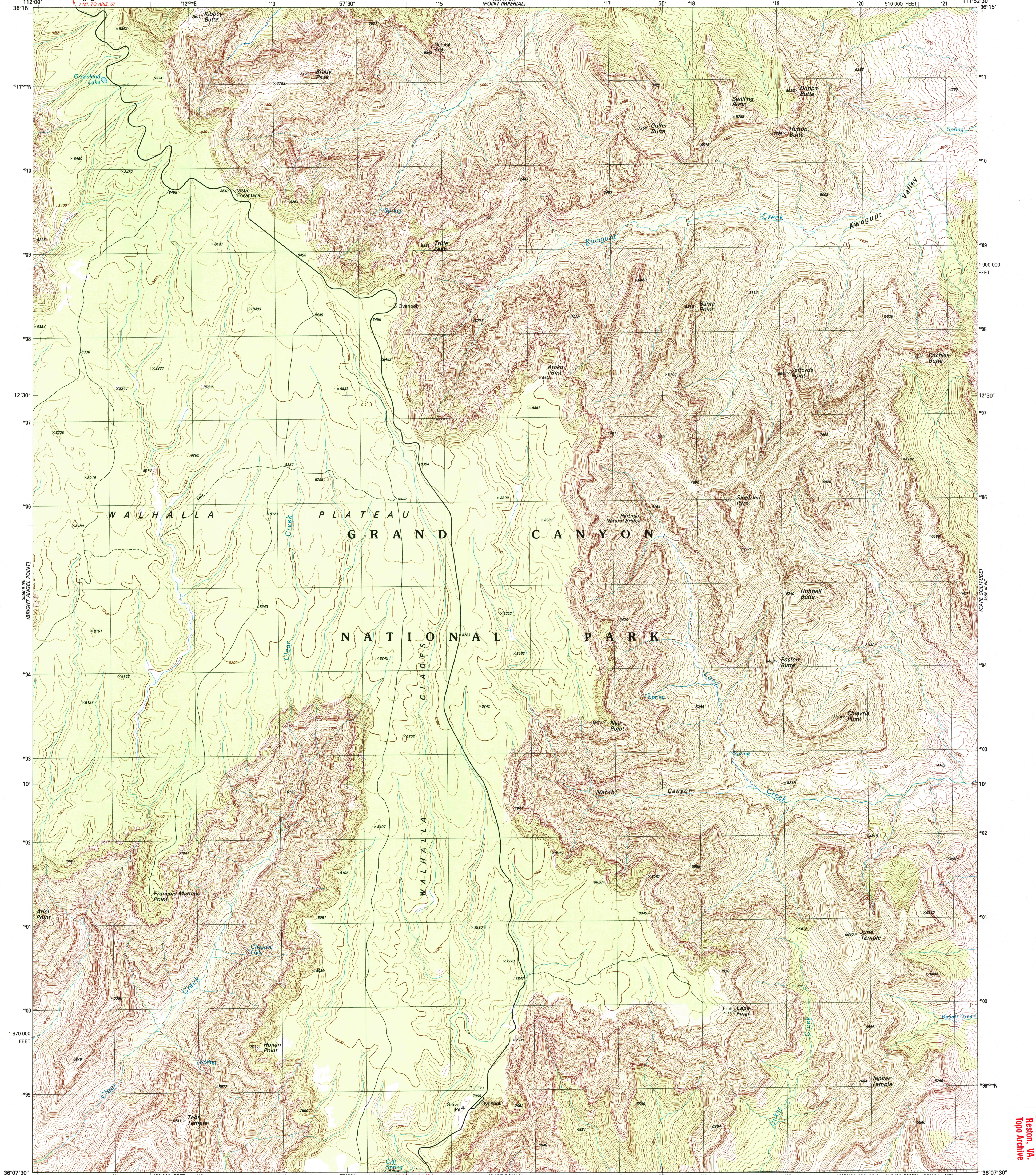


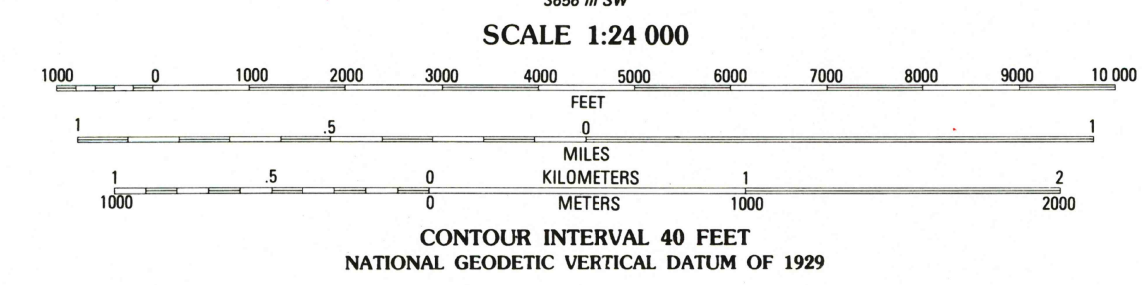
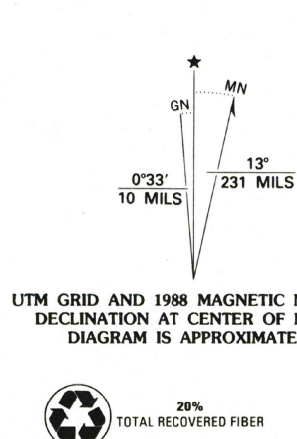


U.S. DEPARTMENT OF THE INTERIOR
U.S. GEOLOGICAL SURVEY

WALHALLA PLATEAU QUADRANGLE
ARIZONA-COCONINO CO.
7.5 MINUTE SERIES (TOPOGRAPHIC)
NW 1/4 VISHNU TEMPLE 15' QUADRANGLE



Produced by the United States Geological Survey
Control by USGS and NOS/NOAA
Compiled by photogrammetric methods from aerial photographs taken 1982. Field checked 1984. Map edited 1988
Projection and 10,000-foot grid ticks: Arizona coordinate system, central zone (transverse Mercator)
1000-meter Universal Transverse Mercator grid, zone 12 1927 North American Datum
To place on the predicted North American Datum 1983 move the projection lines 6 meters north and 66 meters east as shown by dashed corner ticks
Land lines have not been established in this area
There may be private inholdings within the boundaries of the National or State reservations shown on this map



ROAD CLASSIFICATION
Primary highway, hard surface Light-duty road, hard or improved surface ...
Secondary highway, hard surface Unimproved road ...
Interstate Route U.S. Route State Route
RECEIVED
AUG 15 2003
WALHALLA PLATEAU, ARIZ.
NW 1/4 VISHNU TEMPLE 15' QUADRANGLE
36111-B8-TF-024
1988
DMA 3656 III NW-SERIES V898

THIS MAP COMPLIES WITH NATIONAL MAP ACCURACY STANDARDS
FOR SALE BY U.S. GEOLOGICAL SURVEY, P.O. BOX 25286, DENVER, COLORADO 80225
A FOLDER DESCRIBING TOPOGRAPHIC MAPS AND SYMBOLS IS AVAILABLE ON REQUEST

