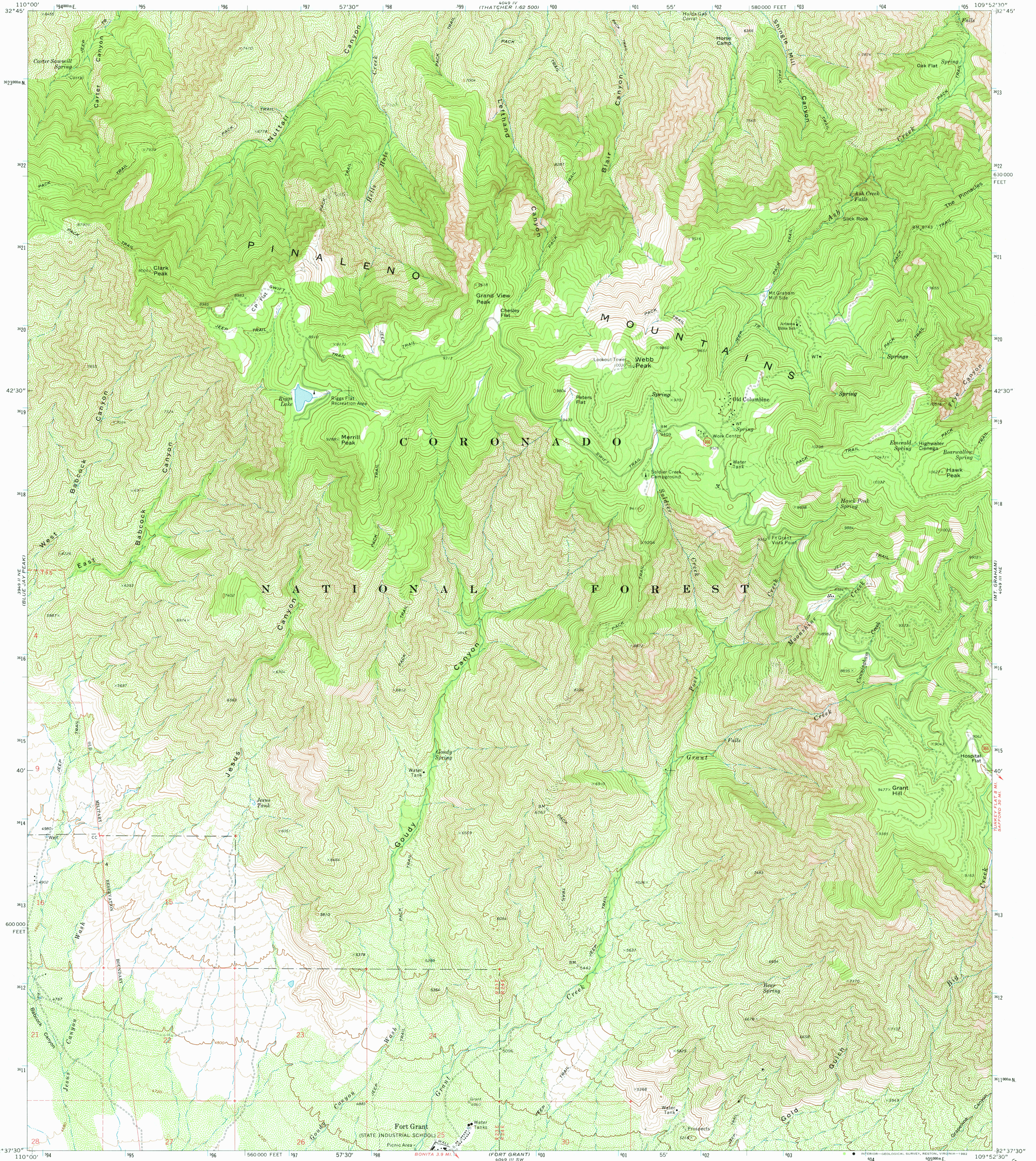


UNITED STATES
DEPARTMENT OF THE INTERIOR
GEOLOGICAL SURVEY

WEBB PEAK QUADRANGLE
ARIZONA—GRAHAM CO.
7.5 MINUTE SERIES (TOPOGRAPHIC)

NW 1/4 MT. GRAHAM 15' QUADRANGLE



Mapped, edited, and published by the Geological Survey

Control by USGS and NOS/NOAA

Topography by photogrammetric methods from aerial photographs taken 1971. Field checked 1972

Projection and 10,000-foot grid ticks: Arizona coordinate system, east zone (transverse Mercator)

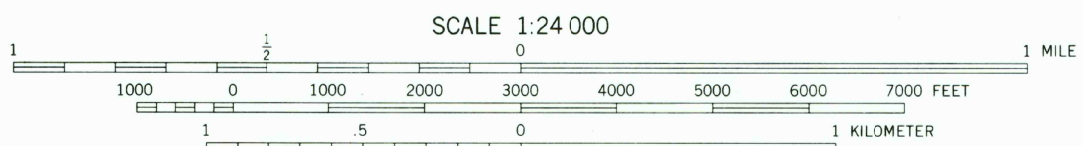
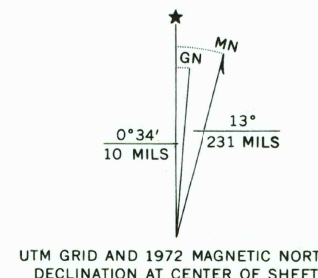
1000-meter Universal Transverse Mercator grid ticks, zone 12, shown in blue. 1927 North American datum

To place on the predicted North American Datum 1983 move the projection lines 6 meters south and 60 meters east as shown by dashed corner ticks

Fine red dashed lines indicate selected fence lines

Where omitted, land lines have not been established

There may be private inholdings within the boundaries of the National or State reservations shown on this map



ROAD CLASSIFICATION	
Primary highway, hard surface	Light-duty road, hard or improved surface
Secondary highway, hard surface	Unimproved road
Interstate Route	U. S. Route
	State Route

WEBB PEAK, ARIZ.
NW 1/4 MT. GRAHAM 15' QUADRANGLE
N3237.5—W10952.5/7.5

1972

DMA 4049 III NW—SERIES V888

THIS MAP COMPLIES WITH NATIONAL MAP ACCURACY STANDARDS
FOR SALE BY U. S. GEOLOGICAL SURVEY, DENVER, COLORADO 80225, OR RESTON, VIRGINIA 22092
A FOLDER DESCRIBING TOPOGRAPHIC MAPS AND SYMBOLS IS AVAILABLE ON REQUEST

RETURN TO:
USGS NMD HISTORICAL MAP ARCHIVES

JUN 08 1982