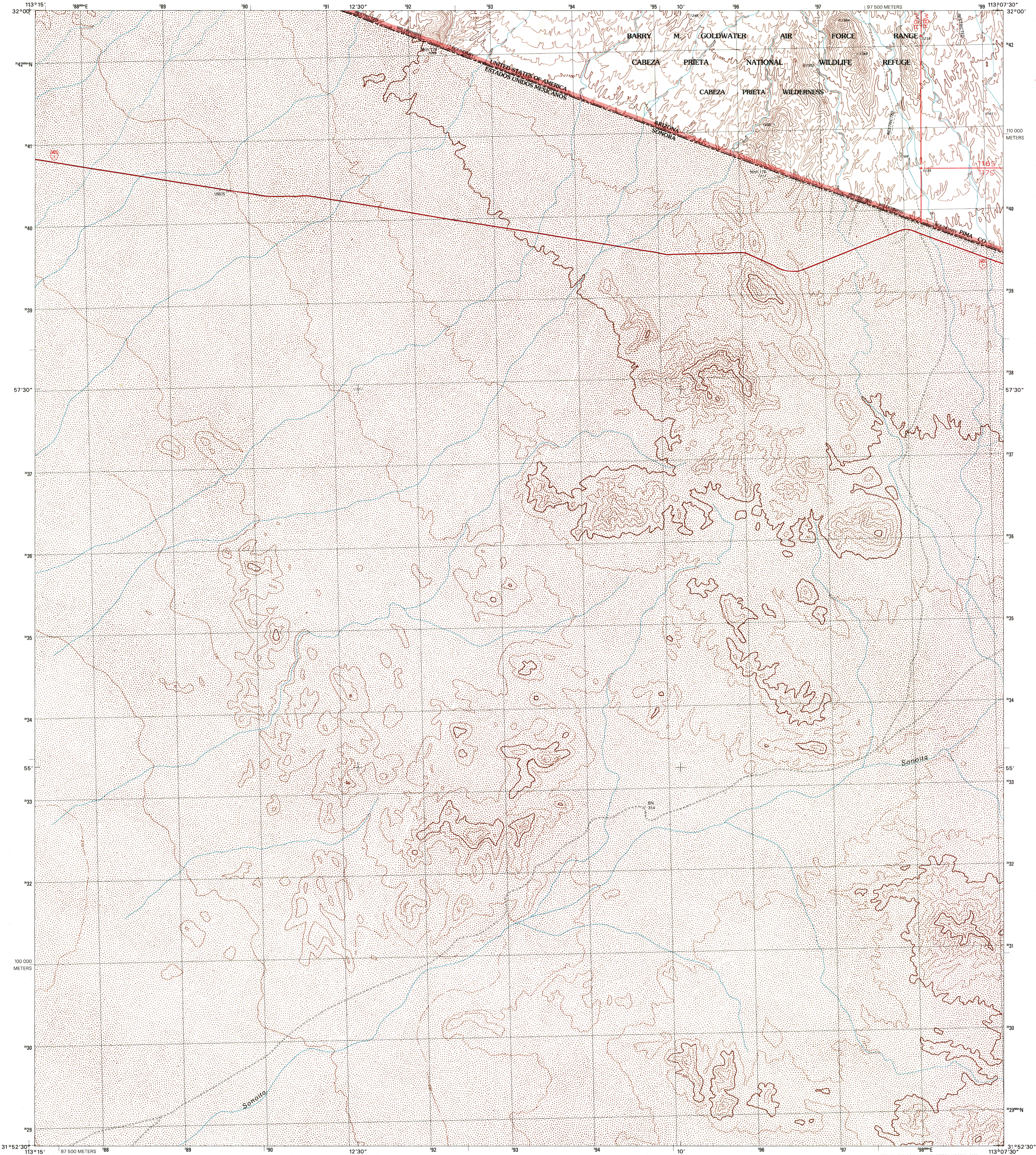




U.S. DEPARTMENT OF THE INTERIOR
U.S. GEOLOGICAL SURVEY

WEST OF QUITOBAQUITO SPRINGS QUADRANGLE
ARIZONA-SONORA
7.5-MINUTE SERIES (TOPOGRAPHIC)



Produced by the United States Geological Survey
Topography compiled 1961. Planimetry derived from imagery taken 1956. Public Land Survey System and survey control current as of 1984.

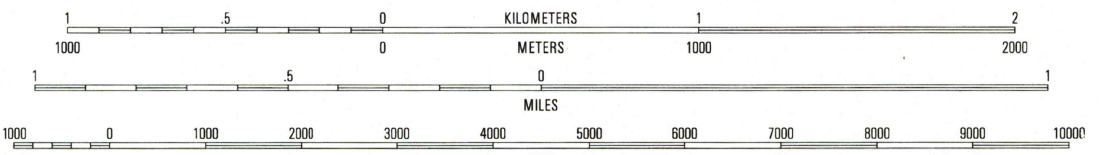
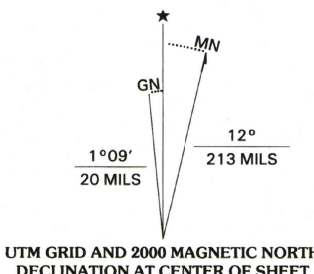
Mexico portion copied from Instituto Nacional de Estadística, Geografía e Informática (INEGI) 1:50,000-scale map, El Papalote H12A13, dated 1981.

North American Datum of 1983 (NAD 83). Projection and 1000-meter grid: Universal Transverse Mercator, zone 12. 2500-meter ticks: Arizona Coordinate System of 1983 (central zone).

North American Datum of 1927 (NAD 27) is shown by dashed corner ticks. The values of the shift between NAD 83 and NAD 27 for 7.5-minute intersections are obtainable from National Geodetic Survey NADCON software.

There may be private inholdings within the boundaries of the National or State reservations shown on this map.

Where omitted, land lines have not been established.



RECEIVED
JUL 31 2000

RECEIVED
JUL 31 2000

FOR SALE BY U.S. GEOLOGICAL SURVEY, P.O. BOX 25286, DENVER, COLORADO 80226
AND BY SERVICIO A USARIOS, INEGI, DIRECCIÓN DE INTEGRACIÓN Y ANÁLISIS, SUBDIRECCIÓN DE COMERCIALIZACIÓN, HÉROE DE NACOZARI 2301 PUERTA 11, COL. DEL PARQUE C.P. 20290, AGUASCALIENTES, AGS, MEXICO
A FOLDER DESCRIBING U.S. TOPOGRAPHIC MAPS AND SYMBOLS IS AVAILABLE ON REQUEST

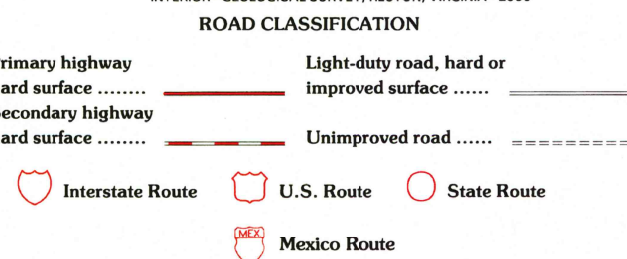


QUADRANGLE LOCATION

1	2	3
4	5	6
7	8	9

1 O'Neill Hills
2 Agua Dulce Mountains
3 Pasa Nuevo Well
4 Quitobaquito Springs
5
6
7
8

ADJOINING 7.5' QUADRANGLE NAMES



WEST OF QUITOBAQUITO SPRINGS, AZ-SON
1996

NIMA 3347 1 NW-SERIES V898

