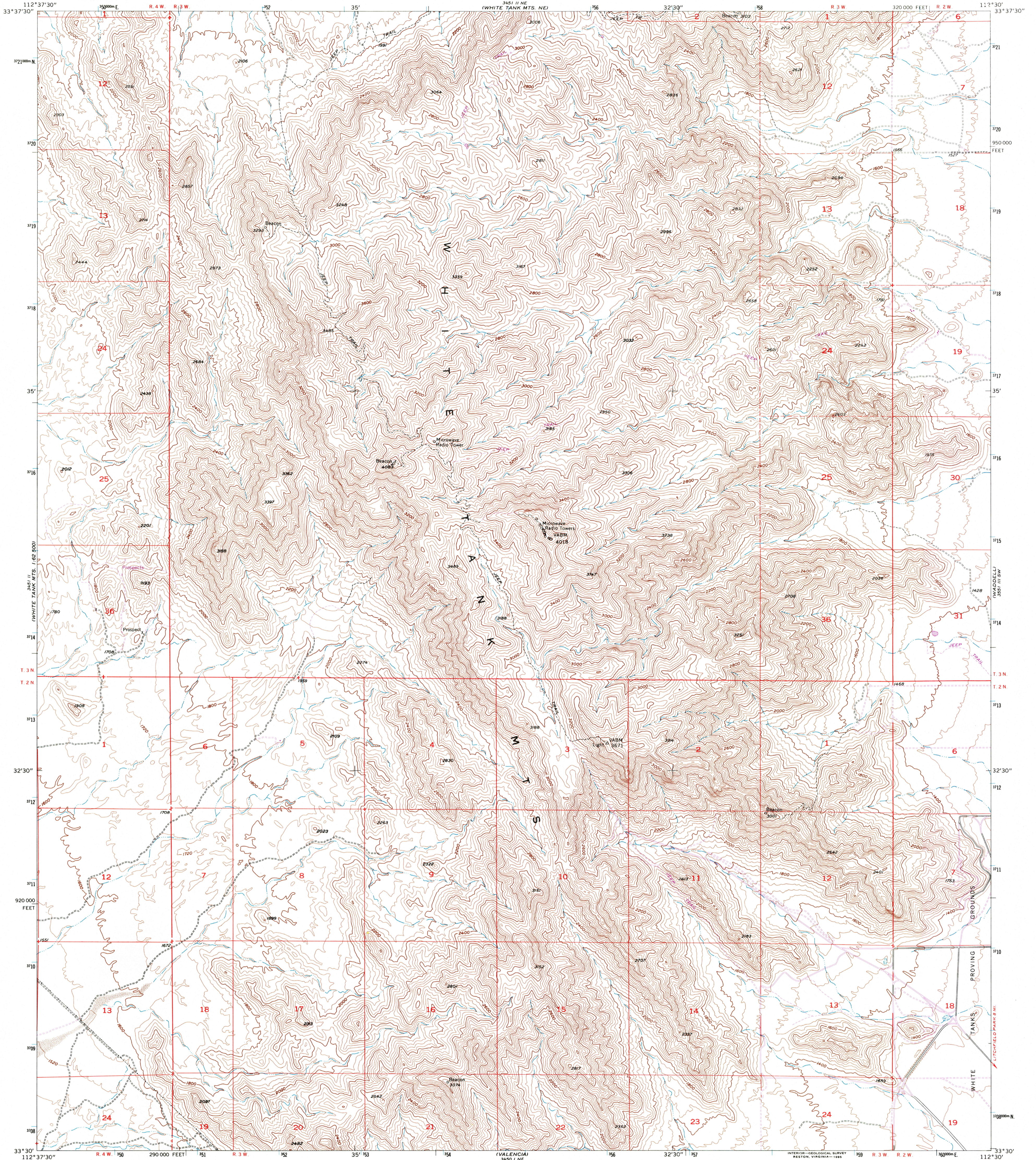


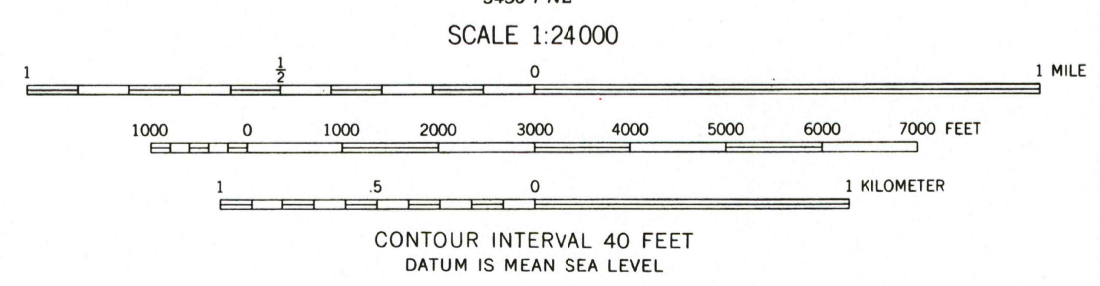
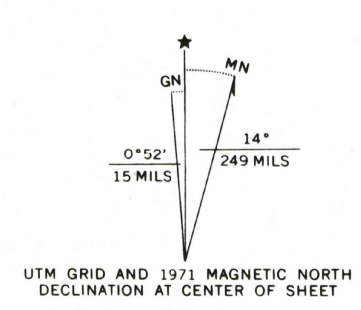


U.S. DEPARTMENT OF THE INTERIOR
U.S. GEOLOGICAL SURVEY

WHITE TANK MTS. QUADRANGLE
ARIZONA—MARICOPA CO.
7.5 MINUTE SERIES (TOPOGRAPHIC)
SE/4 WHITE TANK MTS. 15' QUADRANGLE



Mapped, edited, and published by the Geological Survey
Control by USGS and USC&GS
Topography from aerial photographs by photogrammetric methods
Aerial photographs taken 1954. Field check 1957
Polyconic projection. 1927 North American datum
10,000-foot grid based on Arizona coordinate system,
central zone
1000-meter Universal Transverse Mercator grid ticks,
zone 12, shown in blue
Where omitted, land lines have not been established
Revisions shown in purple compiled from aerial photographs
taken 1971. This information not field checked



SCALE 1:24000
CONTOUR INTERVAL 40 FEET
DATUM IS MEAN SEA LEVEL



ROAD CLASSIFICATION
Light-duty ————— Unimproved dirt - - - - -
RECEIVED WHITE TANK MTS., ARIZ.
DEC 3 1 1998
USGS NMD
HISTORICAL MAP ARCHIVES
1957
PHOTOREVISED 1971
AMS 3451 II SE—SERIES V898



THIS MAP COMPLIES WITH NATIONAL MAP ACCURACY STANDARDS
FOR SALE BY U.S. GEOLOGICAL SURVEY, P.O. BOX 25286, DENVER, COLORADO 80225
A FOLDER DESCRIBING TOPOGRAPHIC MAPS AND SYMBOLS IS AVAILABLE ON REQUEST