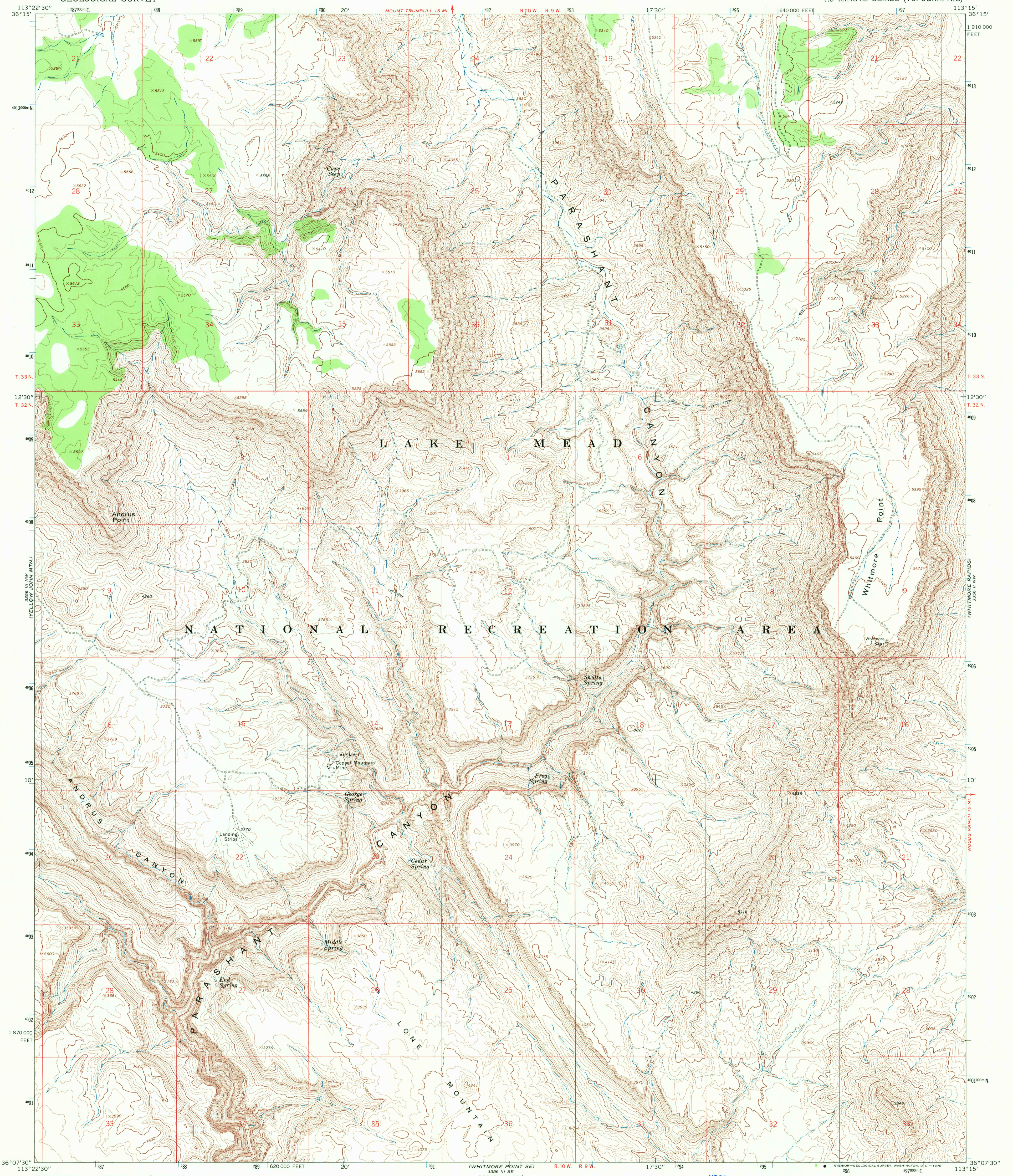
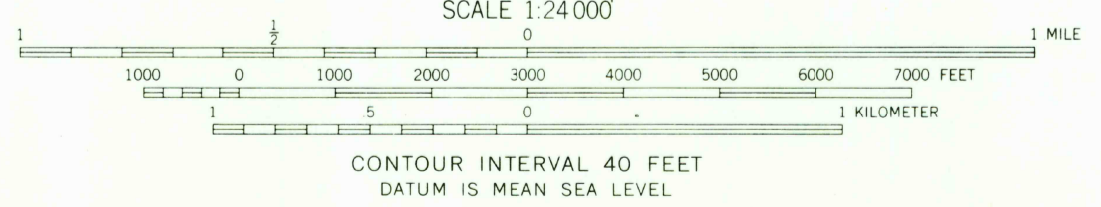
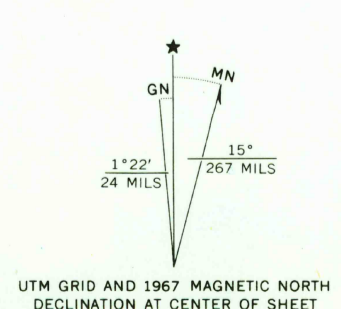


356 SW
(MOUNT LOGAN)



Mapped, edited, and published by the Geological Survey
Control by USGS and USC&GS
Topography by photogrammetric methods from aerial
photographs taken 1966. Field checked 1967
Polyconic projection. 1927 North American datum
10,000-foot grid based on Arizona coordinate system, west zone
1000-meter Universal Transverse Mercator grid ticks,
zone 12, shown in blue



USGS
Historical File
Topographic Division

U.S.G.S.
FILE COPY
TOPOGRAPHIC DIVISION

ROAD CLASSIFICATION
Unimproved dirt -----



WHITMORE POINT, ARIZ.
N3607.5—W11315.7.5

THIS MAP COMPLIES WITH NATIONAL MAP ACCURACY STANDARDS
FOR SALE BY U. S. GEOLOGICAL SURVEY, DENVER, COLORADO 80225. OR WASHINGTON, D. C. 20242
A FOLDER DESCRIBING TOPOGRAPHIC MAPS AND SYMBOLS IS AVAILABLE ON REQUEST

1967
AMS 3356 III NE—SERIES V898

3190
DEC 2 2 1970