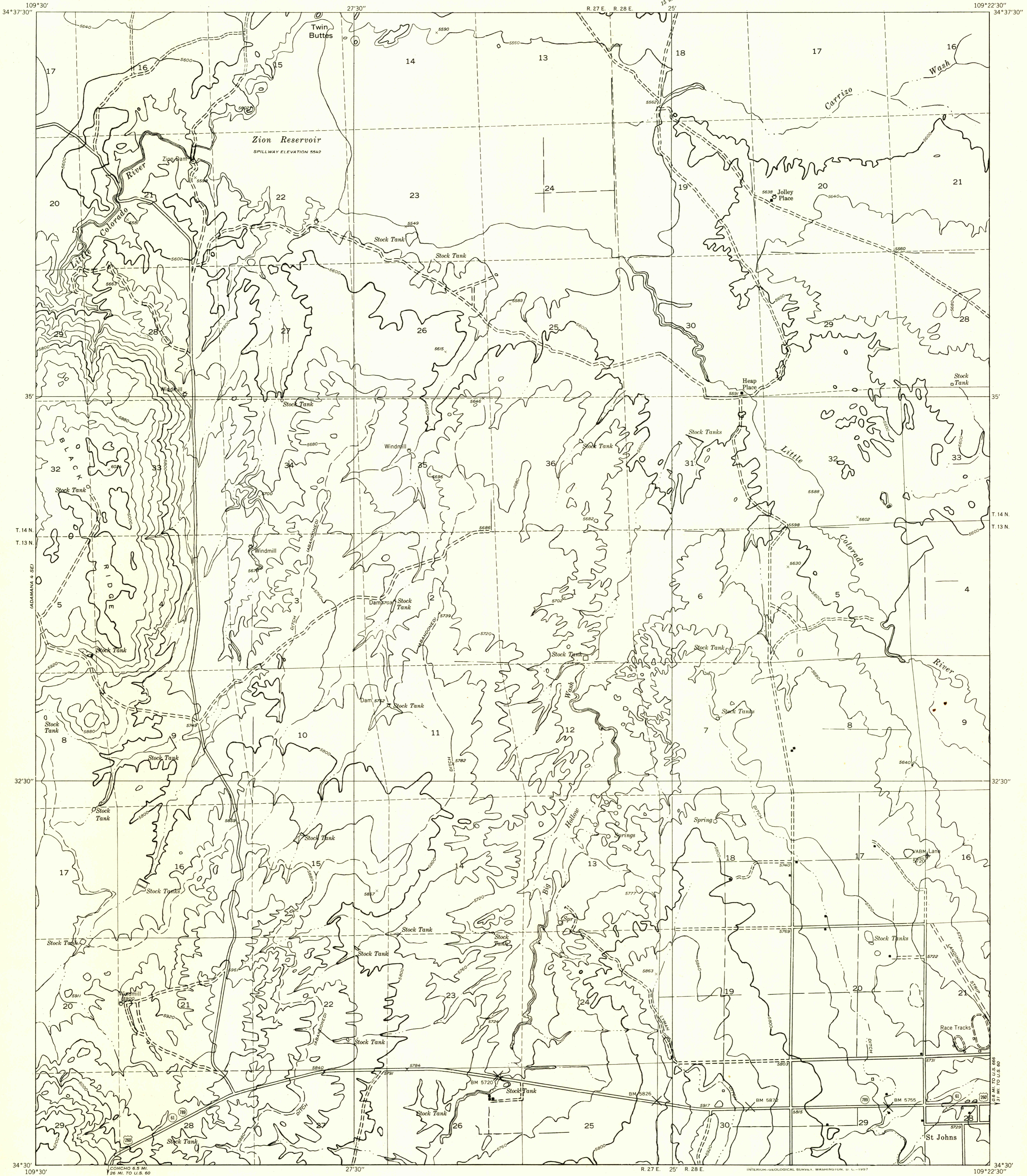
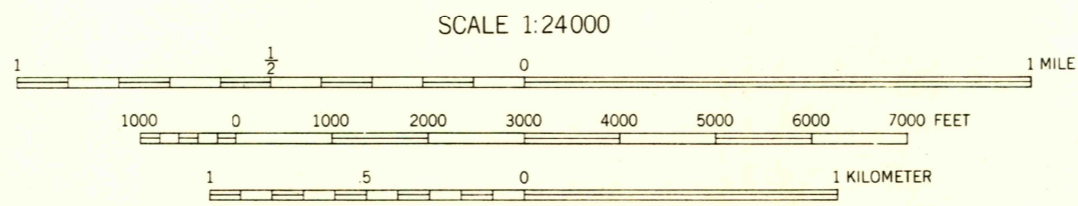
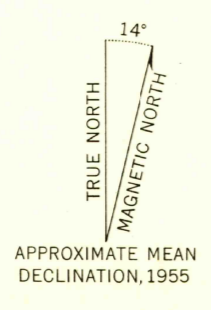


Preliminary edition
Pending completion of 1:62,500 scale
15 minute maps covering this area



109°30'
34°37'30"
Mapped by the Geological Survey 1955
Topography by multiplex methods from
aerial photographs taken 1953
Dashed land lines indicate approximate locations
Symbols and other detail herein
drawn for 1:62,500 scale publication



SCALE 1:24000
CONTOUR INTERVAL 40 FEET
DATUM IS MEAN SEA LEVEL

ROAD CLASSIFICATION
Improved ——— Unimproved - - - - -