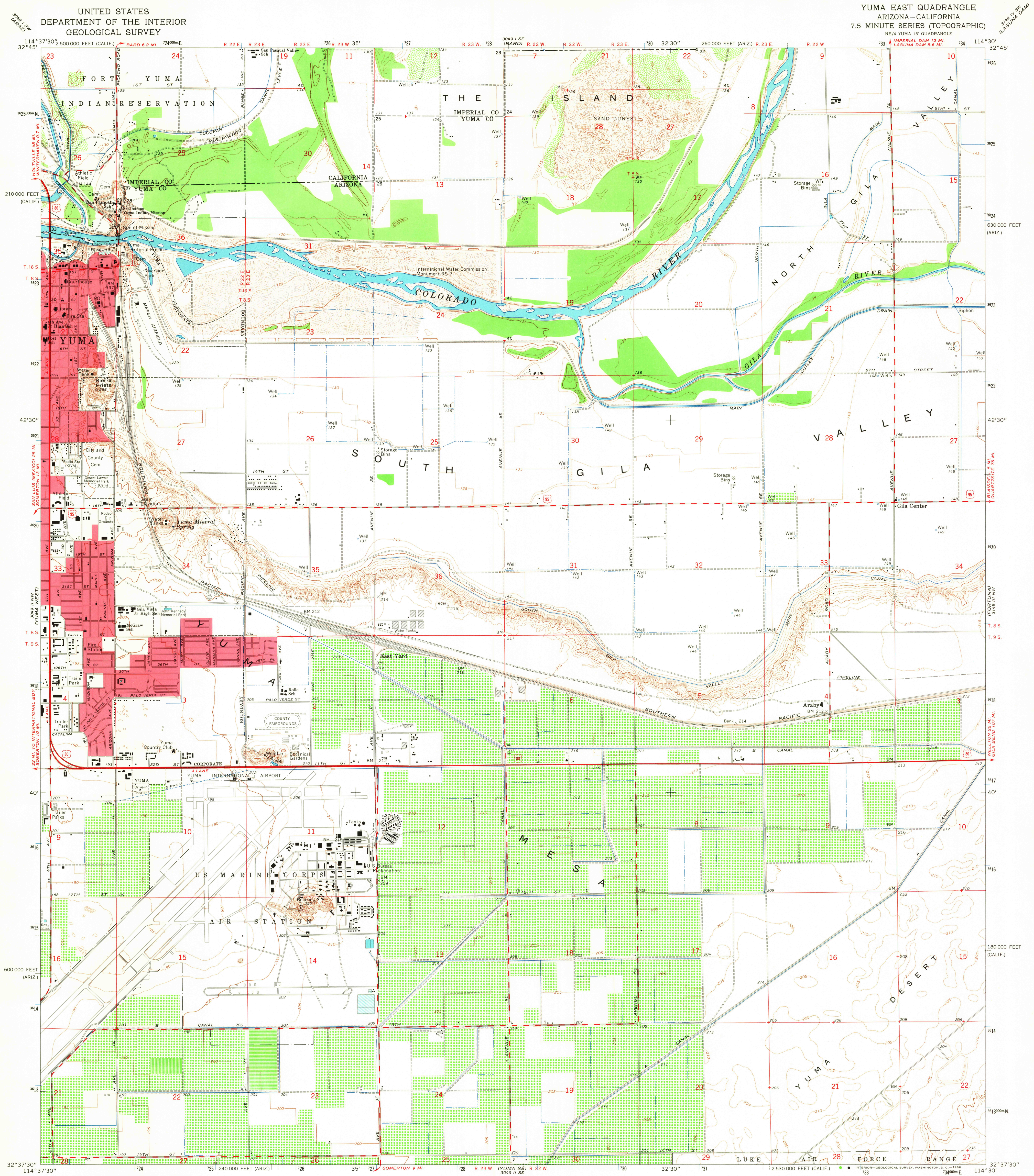


UNITED STATES  
DEPARTMENT OF THE INTERIOR  
GEOLOGICAL SURVEY

YUMA EAST QUADRANGLE  
ARIZONA—CALIFORNIA  
7.5 MINUTE SERIES (TOPOGRAPHIC)  
NE/4 YUMA 15' QUADRANGLE



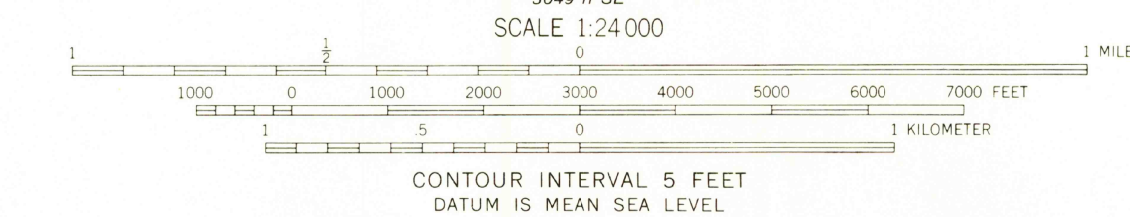
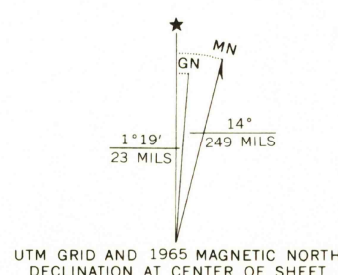
Maped, edited, and published by the Geological Survey  
in cooperation with the State of California

Control by USGS and USC&GS

Planimetry by photogrammetric methods from aerial photographs  
taken 1948. Topography by planimetric surveys 1952. Revised from  
aerial photographs taken 1962 and by planimetric surveys 1965

Polyconic projection. 1927 North American datum  
10,000-foot grids based on Arizona coordinate system, west zone,  
and California coordinate system, zone 6  
1,000-meter Universal Transverse Mercator grid ticks,  
zone 11, shown in blue

Red tint indicates areas in which only landmark buildings are shown



THIS MAP COMPLIES WITH NATIONAL MAP ACCURACY STANDARDS  
FOR SALE BY U.S. GEOLOGICAL SURVEY, DENVER, COLORADO 80225, OR WASHINGTON, D.C. 20242  
A FOLDER DESCRIBING TOPOGRAPHIC MAPS AND SYMBOLS IS AVAILABLE ON REQUEST

ROAD CLASSIFICATION  
Heavy-duty ——— Light-duty ———  
Medium-duty ——— Unimproved dirt ———  
U.S. Route



U.S.G.S.  
TOPOGRAPHIC DIVISION

YUMA EAST, ARIZ.—CALIF.  
NE/4 YUMA 15' QUADRANGLE  
N3237.5—W11430.7/5

1965

AMS 3049 II NE—SERIES V898