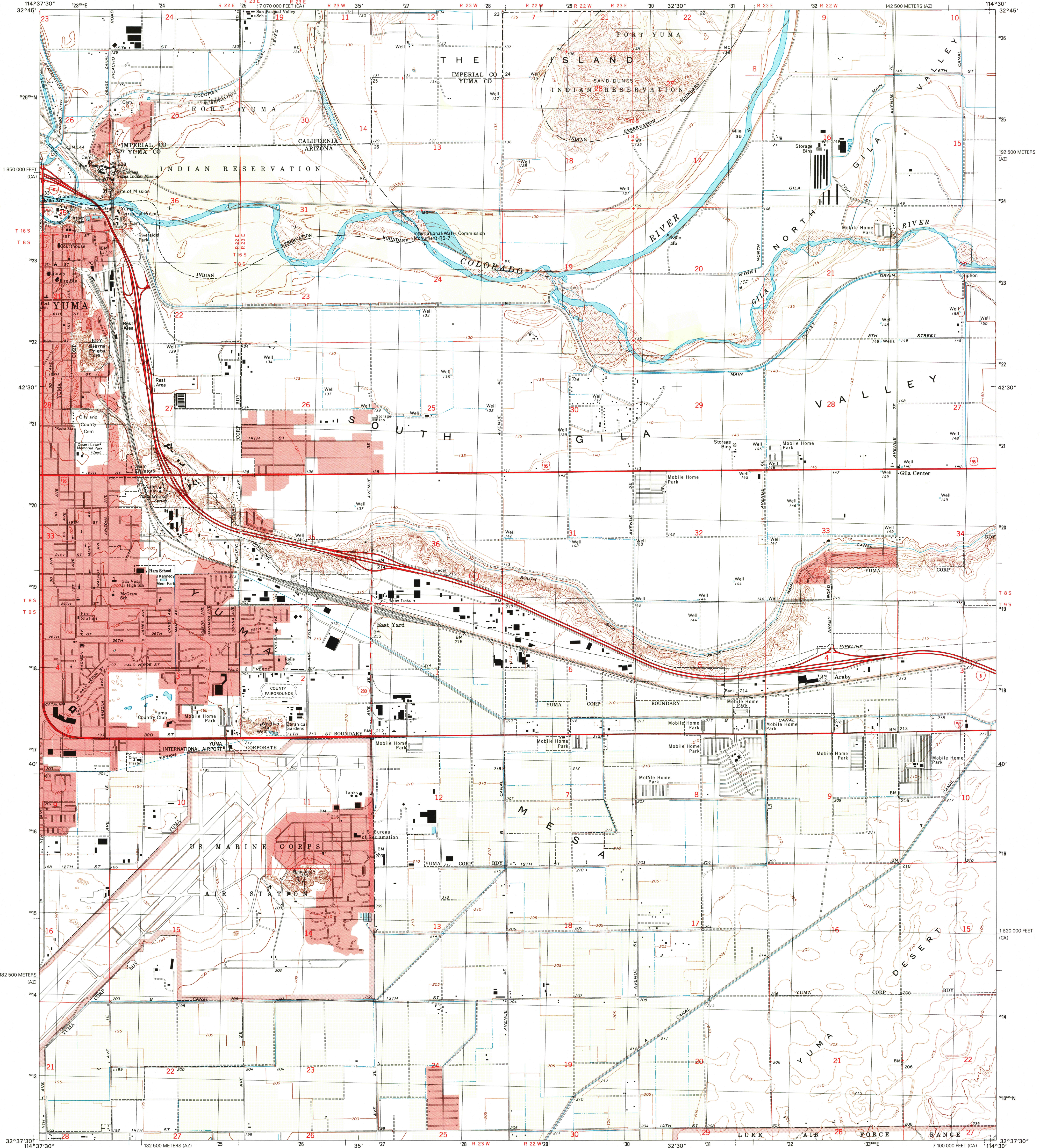


UNITED STATES
DEPARTMENT OF THE INTERIOR
GEOLOGICAL SURVEY

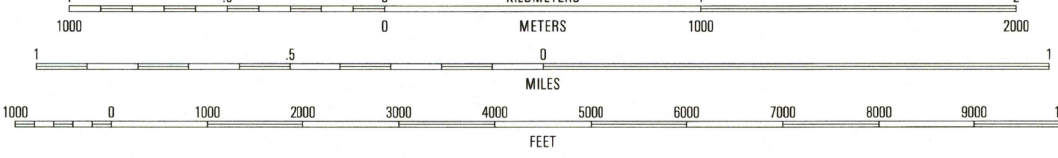
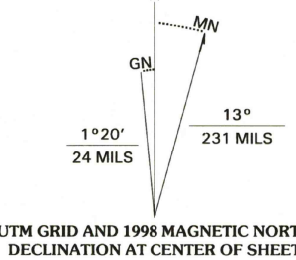
YUMA EAST QUADRANGLE
ARIZONA-CALIFORNIA
7.5-MINUTE SERIES (TOPOGRAPHIC)



Produced by the United States Geological Survey
Topography compiled 1994. Planimetry derived from imagery
taken 1994. Public Land Survey System and Survey Control
current as of 1992.

North American Datum of 1983 (NAD 83). Projection and
1000-meter grid: Universal Transverse Mercator, zone 11
2500-meter ticks: Arizona Coordinate System of 1983 (west zone)
and 10 000-foot ticks: California Coordinate System of 1983
(zone 6)

North American Datum of 1927 (NAD 27) is shown by dashed
corner ticks. The values of the shift between NAD 83 and NAD 27
for 7.5-minute intersections are obtainable from National Geographic
Survey NADCON software
There may be private inholdings within the boundaries of
the National or State Reservation shown on this map
Landmark buildings verified 1995
Contour gaps near map edges are due to NAD 83 shift



CONTOUR INTERVAL 5 FEET
NATIONAL GEODETIC VERTICAL DATUM OF 1929
TO CONVERT FROM FEET TO METERS, MULTIPLY BY 0.3048

THIS MAP COMPLIES WITH NATIONAL MAP ACCURACY STANDARDS
FOR SALE BY U.S. GEOLOGICAL SURVEY, P.O. BOX 25286, DENVER, COLORADO 80226
A FOLDER DESCRIBING TOPOGRAPHIC MAPS AND SYMBOLS IS AVAILABLE ON REQUEST

RECEIVED
MAR 31 1999
USGS NMD
HISTORICAL MAP ARCHIVES



1	2	3	1 Arroyo
4	5	6	2 Yuma Dam
7	8	7	3 Yuma West
		8	4 Yuma East
			5 Yuma SE
			6 Yuma SW

ROAD CLASSIFICATION
Primary highway
Secondary highway
Light-duty road, hard or
improved surface
Unimproved road
Interstate Route
U.S. Route
State Route

YUMA EAST, AZ-CA
1994
NIMA 3049 II NE-SERIES V898

