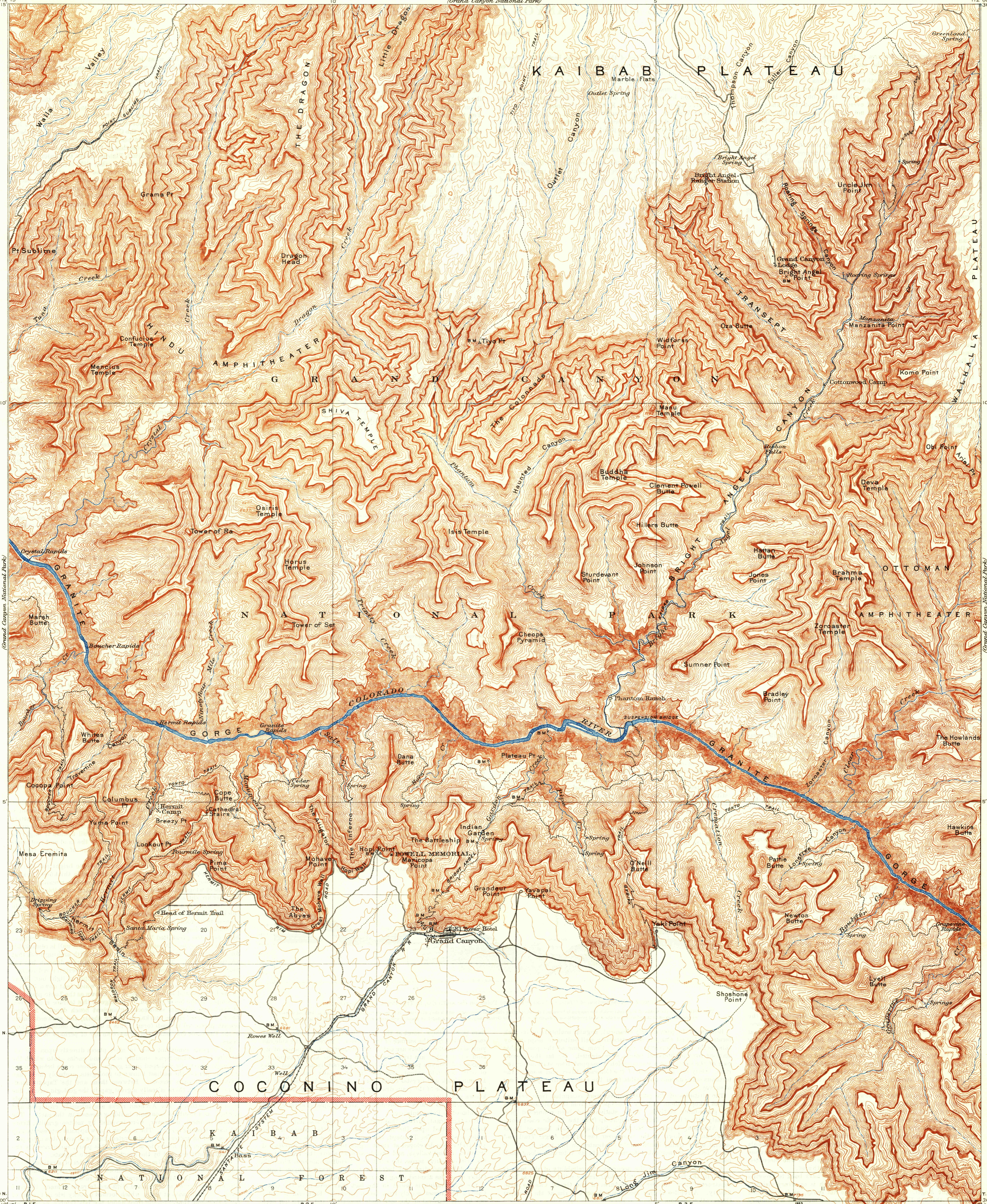


U.S.G.S. FILE COPY Inspection and Editing

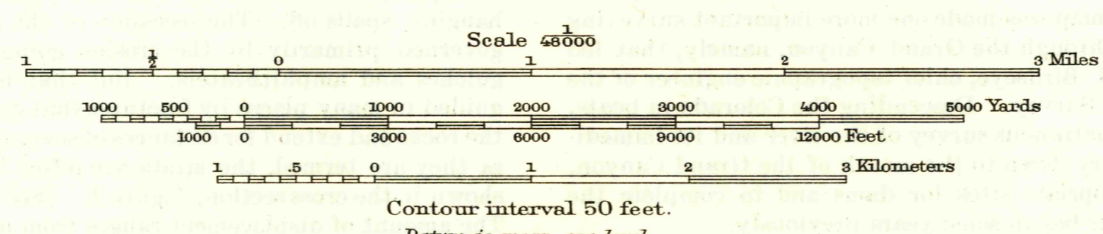
UNITED STATES DEPARTMENT OF THE INTERIOR GEOLOGICAL SURVEY

ARIZONA (COCONINO COUNTY) BRIGHT ANGEL QUADRANGLE



E. M. Douglas, Geographer in charge. Topography by Francois E. Matthes. Triangulation by H. L. Baldwin, Jr. and J. T. Stewart. Surveyed in 1902-1903.

APPROXIMATE MEAN DECLINATION, 1903



USGS Historical File Topographic Division

Polyconic projection. To place on North American datum move projected lines 470 feet south and 290 feet west. BRIGHT ANGEL, ARIZ. N3600-W1200/5 1903

A map of Grand Canyon National Park, scale 1:48,000, or 4,000 feet to the inch; contour interval 50 feet, is published in two sheets (east and west) FOR SALE BY U.S. GEOLOGICAL SURVEY, FEDERAL CENTER, DENVER, COLORADO OR WASHINGTON 25, D.C. A FOLDER DESCRIBING TOPOGRAPHIC MAPS AND SYMBOLS IS AVAILABLE ON REQUEST

U.S.G.S. FILE COPY Inspection and Editing

SEP 14 1953 8460