

This sheet must not be taken from
the files without an order from the
Chief Topographic Engineer.

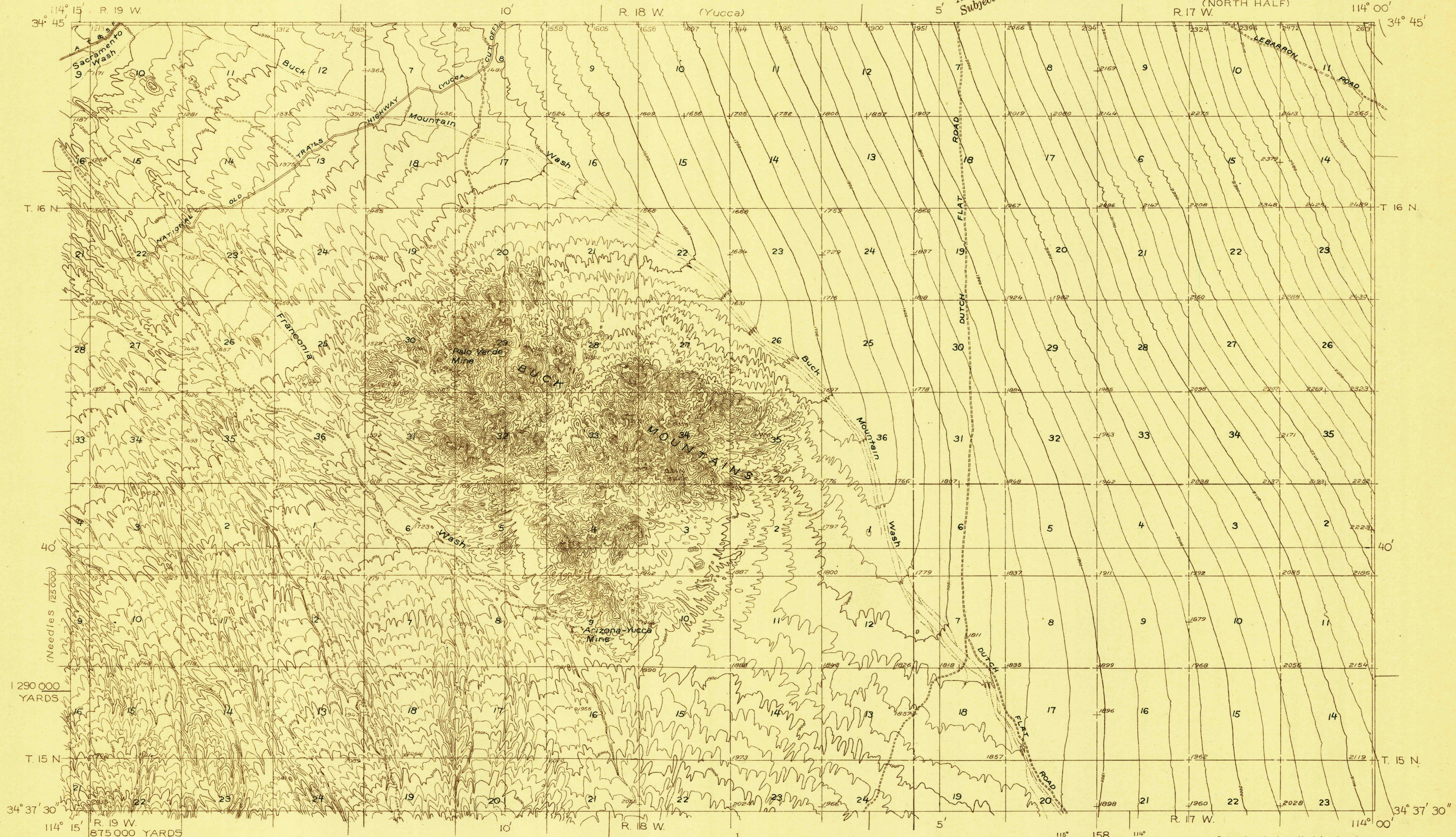
TOPOGRAPHIC FILES

DEPARTMENT OF THE INTERIOR
U. S. GEOLOGICAL SURVEY

159-N-IV-E/2-N/2
STATE OF ARIZONA
GEO. W. P. HUNT, GOVERNOR
FRANK P. TROTT, STATE WATER COMMISSIONER

ARIZONA
(MOHAVE COUNTY)
BUCK MOUNTAINS QUADRANGLE
(NORTH HALF)
R. 17 W. 114° 00' 34° 45'

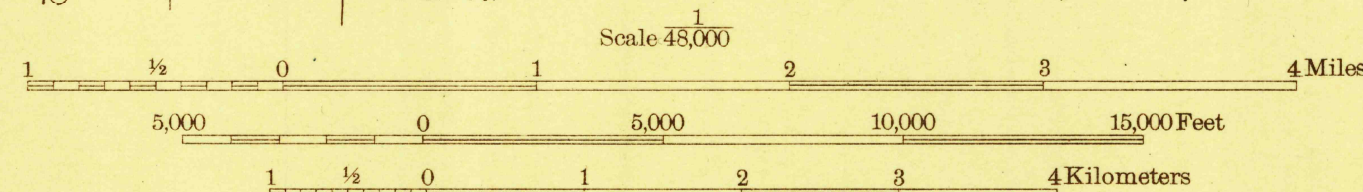
Advance sheet
Subject to correction



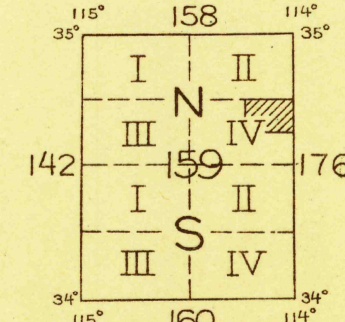
T. G. Gerdine, Division Engineer
Topography by J.L. Lewis and Bishop Moorhead
Control by U. S. Geological Survey and U. S. Coast and Geodetic Survey
Surveyed in 1926-1927



TRUE NORTH
MAGNETIC NORTH
APPROXIMATE MEAN
DECLINATION, 1927



Contour interval 25 feet
Datum is mean sea level



Polyconic projection. North American datum
5000 yard grid based upon U. S. zone system, F

BUCK MOUNTAINS, ARIZ.