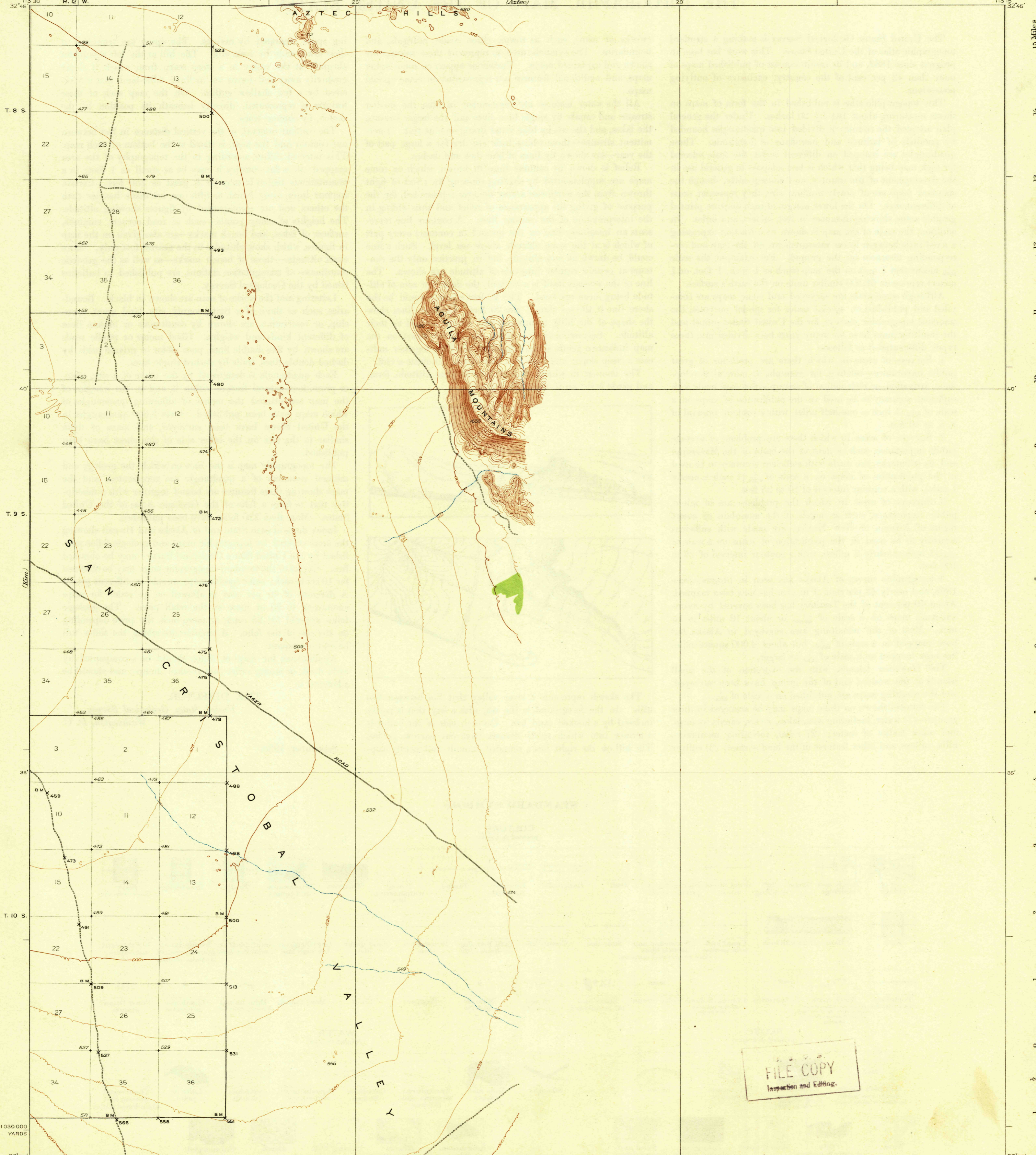
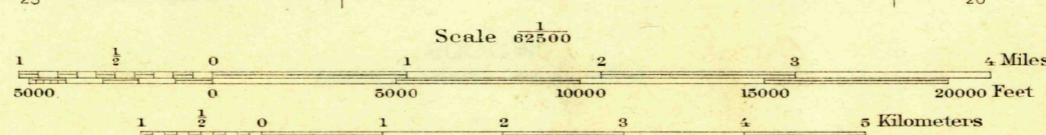
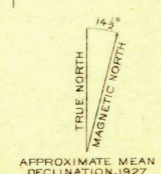


FILE COPY

Inspection and Editing.



1030 000
YARDS
32' 30"
113' 30" R. 12 W. 1950 000 YARDS
Topography by Bishop Moorhead and C.N. Mortenson
Control by U.S. Geological Survey and U.S. Coast and Geodetic Survey
Surveyed in 1927



Contour interval 25 feet
Datum is mean sea level

FILE COPY
Inspection and Editing.

USGS
Historical File
Topographic Division

Polyconic projection, North American datum
5000 yard grid based upon U.S. zone system, T

AGUILA MOUNTAINS, ARIZ.
Edition of 1930

OCT 16 1930 (1970) 1970