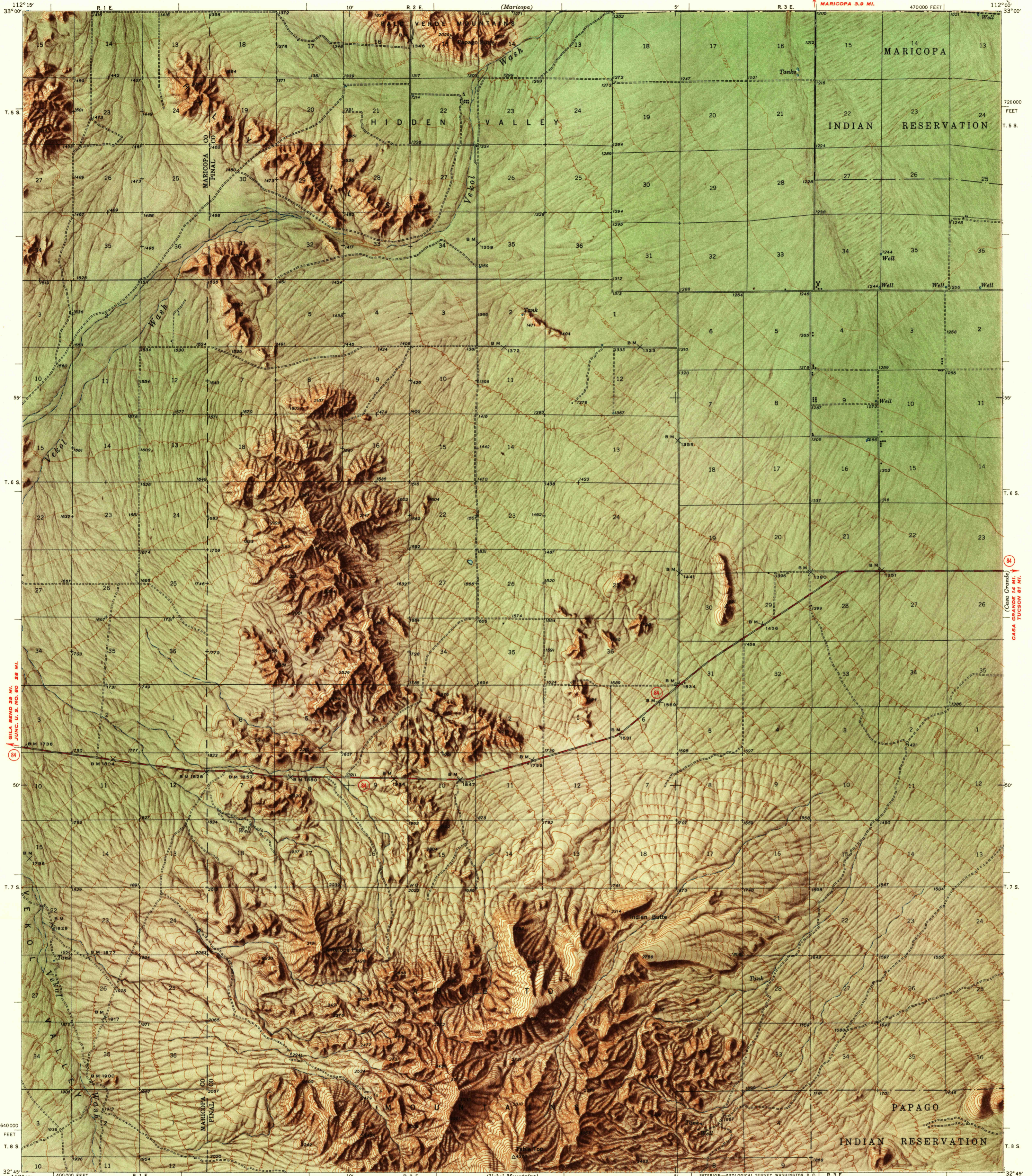


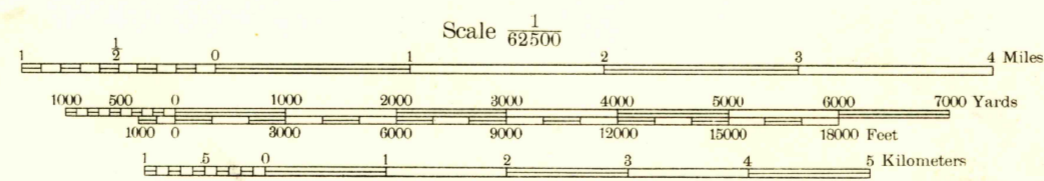
U. S. G. S.
FILE COPY
Inspection and Editing



Mapped by the Geological Survey
1946

ROAD CLASSIFICATION 1947
Dependable hard-surface road
heavy-duty road
Secondary hard-surface
all weather road
Dirt road
More than two lanes indicated along road with tick at point of change
1947
Dry weather roads
Loose-surface graded
Unsurfaced, graded
Dirt road
State Route
U. S. Route
State Route

TRUE NORTH
MAGNETIC NORTH
APPROXIMATE MEAN
DECLINATION, 1946



Scale 1/62500
Contour interval 25 feet
Datum is mean sea level

U. S. G. S.
FILE COPY
Inspection and Editing

USGS
Historical File
Topographic Division

Polyconic projection, 1927 North American datum
10000 foot grid based on Arizona (Central)
rectangular coordinate system
To join Casa Grande map
use dotted projection corners.
ANTELOPE PEAK, ARIZ.
Edition of 1948
SHADED RELIEF PRINTED 1953
N3245-W11200/15

THIS MAP AVAILABLE WITH OR WITHOUT SHADED RELIEF OVERPRINT

JUL 23 1953
1620