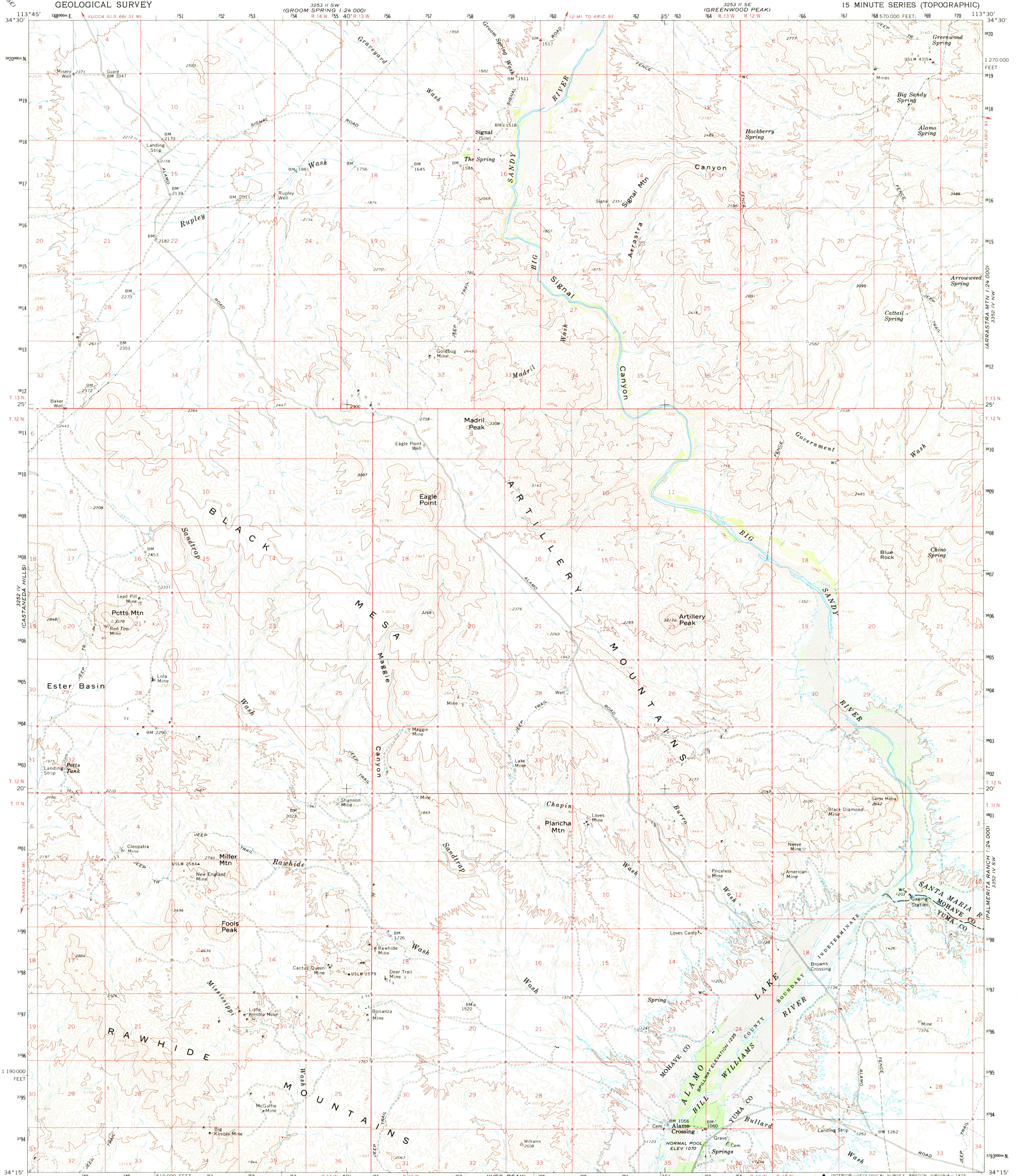
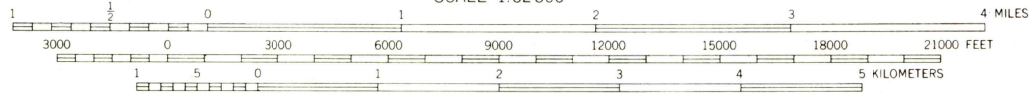
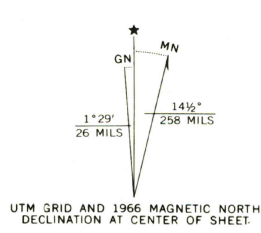


UNITED STATES
DEPARTMENT OF THE INTERIOR
GEOLOGICAL SURVEY

ARTILLERY PEAK QUADRANGLE
ARIZONA
15 MINUTE SERIES (TOPOGRAPHIC)



Mapped, edited, and published by the Geological Survey
Control by USGS and USC&GS
Topography by photogrammetric methods from aerial
photographs taken 1964. Field checked 1966
Polyconic projection. 1927 North American datum
10,000-foot grid based on Arizona coordinate system, west zone
1000-meter Universal Transverse Mercator grid ticks,
zone 12, shown in blue
Blue hatching indicates areas to be submerged by Alamo Reservoir
at elevation 1070. Areas covered by dashed light-blue pattern
are subject to controlled inundation



CONTOUR INTERVAL 80 FEET
DOTTED LINES REPRESENT 40-FOOT CONTOURS
NATIONAL GEODETIC VERTICAL DATUM OF 1929

THIS MAP COMPLIES WITH NATIONAL MAP ACCURACY STANDARDS
FOR SALE BY U.S. GEOLOGICAL SURVEY, DENVER, COLORADO 80225, OR RESTON, VIRGINIA 22092
A FOLDER DESCRIBING TOPOGRAPHIC MAPS AND SYMBOLS IS AVAILABLE ON REQUEST



ROAD CLASSIFICATION

Light duty ————— Unimproved dirt —————

ARTILLERY PEAK, ARIZ.
N3415—W11330/15

1966

AMS 3252 I—SERIES V798

USGS
HISTORICAL FILE
TOPOGRAPHIC DIVISION

JUN 0 2 1975
5320