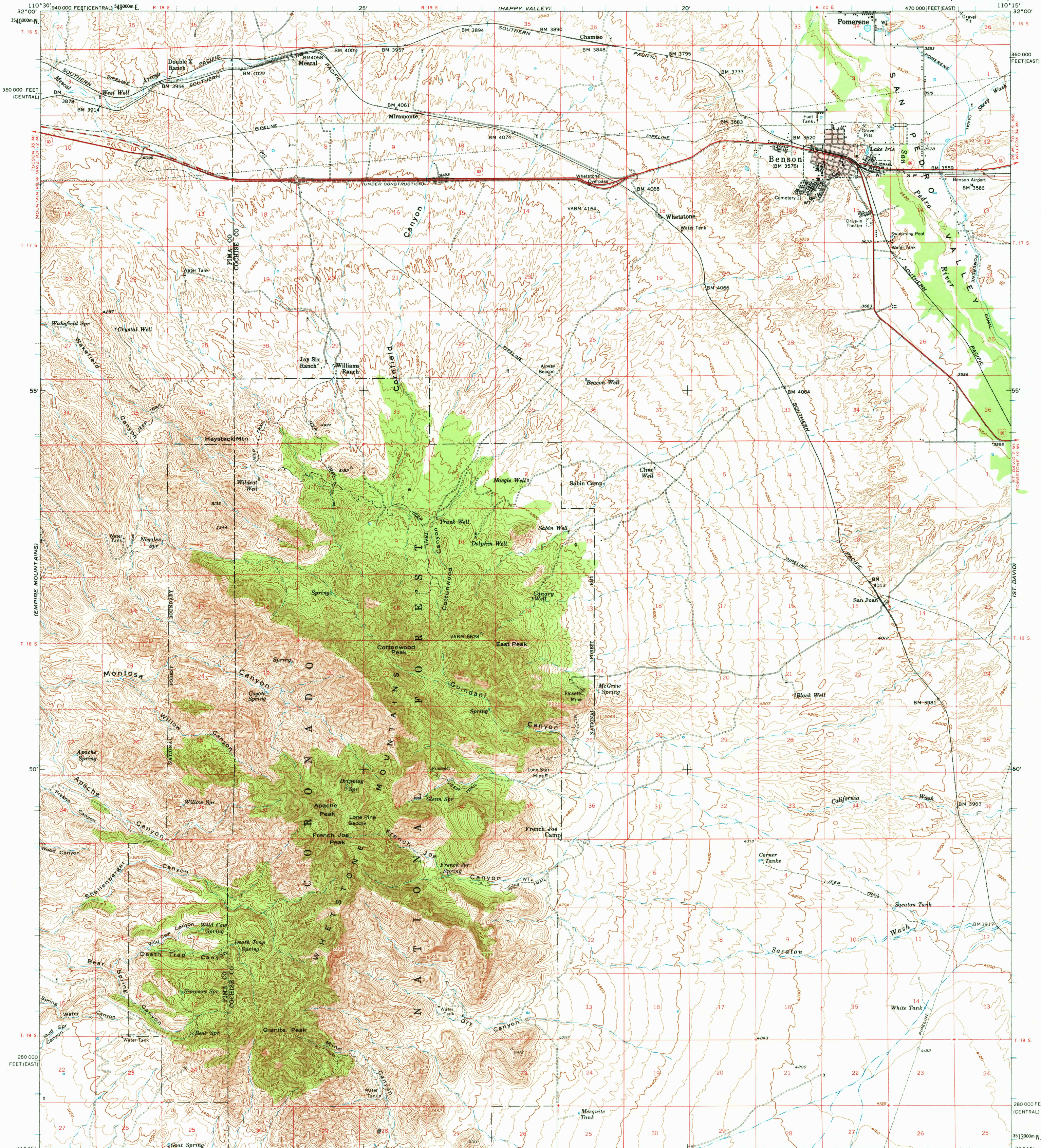
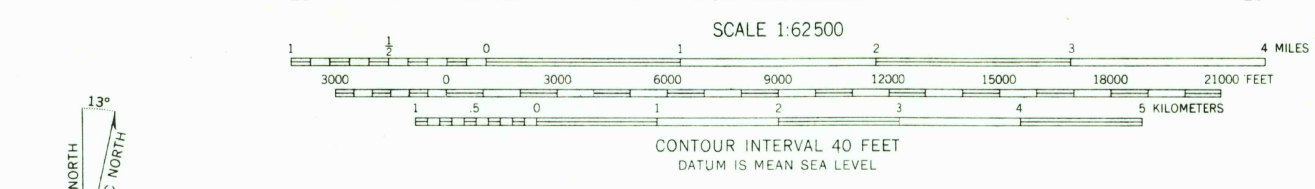


UNITED STATES  
DEPARTMENT OF THE INTERIOR  
GEOLOGICAL SURVEY

BENSON QUADRANGLE  
ARIZONA  
15 MINUTE SERIES (TOPOGRAPHIC)



Mapped, edited, and published by the Geological Survey  
Control by USGS and USC&GS  
Topography from aerial photographs by ER-55 plotter  
Aerial photographs taken 1955. Field check 1958  
Polyconic projection. 1927 North American datum  
10,000-foot grids based on Arizona coordinate system  
east and central zones  
1000-meter Universal Transverse Mercator grid ticks,  
zone 12, shown in blue  
Red tint indicates areas in which only landmark buildings are shown  
Dashed land lines indicate approximate locations  
Land lines unsurveyed in parts of T. 19 S.-R. 19 E.  
Unchecked elevations are shown in brown



ROAD CLASSIFICATION  
Heavy-duty — Light-duty —  
Medium-duty — Unimproved dirt —  
U.S. Route — State Route

THIS MAP COMPLIES WITH NATIONAL MAP ACCURACY STANDARDS  
FOR SALE BY U.S. GEOLOGICAL SURVEY, DENVER 25, COLORADO OR WASHINGTON 25, D. C.  
A FOLDER DESCRIBING TOPOGRAPHIC MAPS AND SYMBOLS IS AVAILABLE ON REQUEST

BENSON, ARIZ.  
N3145-W11015/15  
1958

USGS  
HISTORICAL FILE  
TOPOGRAPHIC

710  
3880

MAR 28 1973