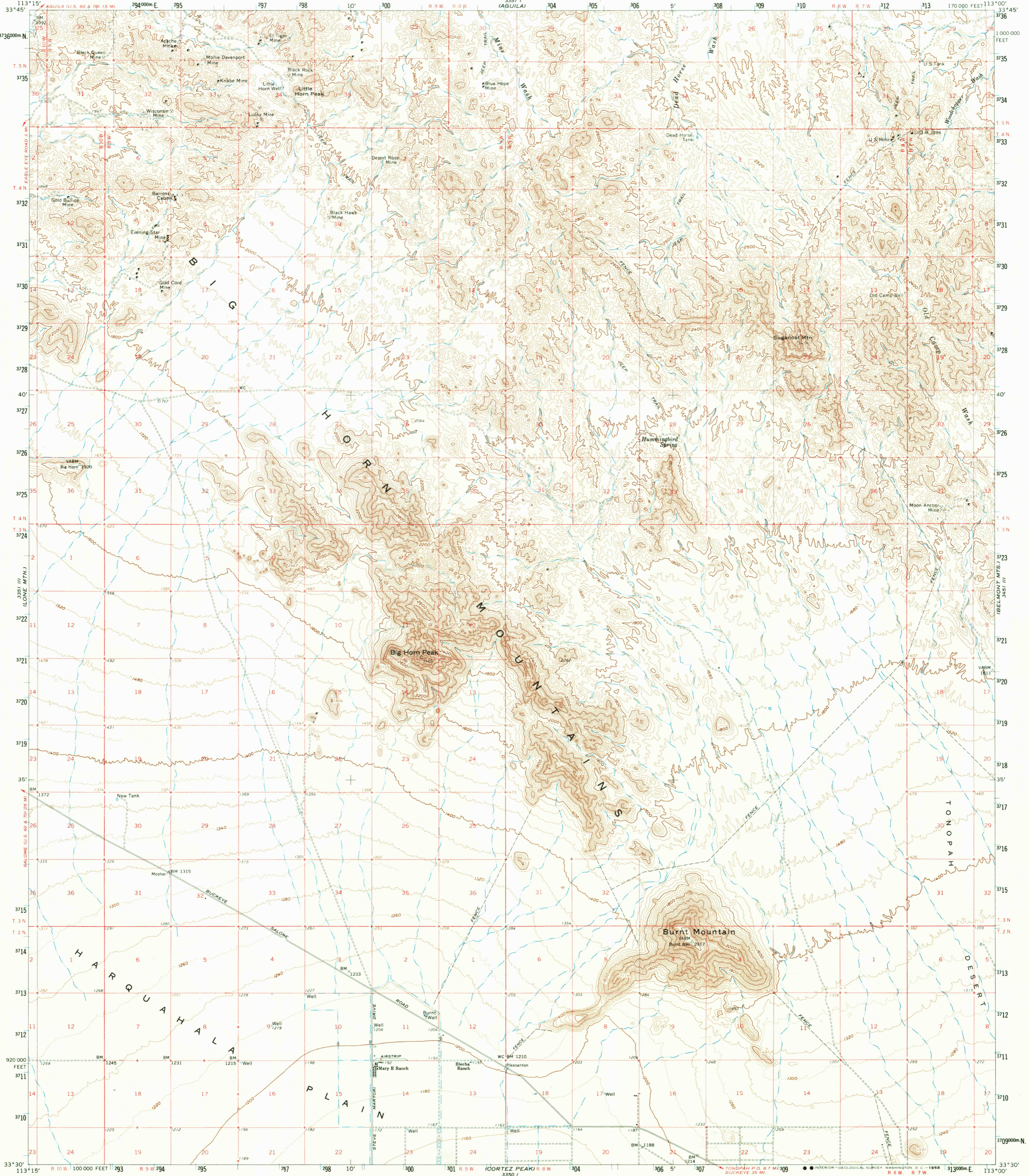
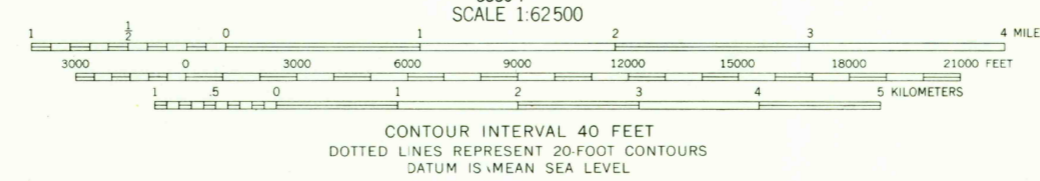
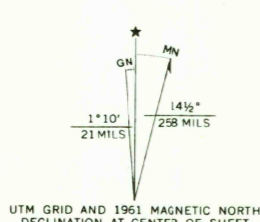


UNITED STATES
DEPARTMENT OF THE INTERIOR
GEOLOGICAL SURVEY

BIG HORN MTS. QUADRANGLE
ARIZONA—MARICOPA CO.
15 MINUTE SERIES (TOPOGRAPHIC)



Mapped, edited, and published by the Geological Survey
Control by USGS and USC&GS
Topography by photogrammetric methods from aerial
photographs taken 1960. Field checked 1961
Polyconic projection. 1927 North American datum
10,000-foot grid based on Arizona coordinate system, central zone
1000-meter Universal Transverse Mercator grid ticks,
zone 12, shown in blue
Where omitted, land lines have not been established



USGS
Historical File
Topographic Division

ROAD CLASSIFICATION
Light duty Unimproved dirt

ARIZONA
U.S.G.S.
FILE COPY
TOPOGRAPHIC DIVISION

BIG HORN MTS., ARIZ.
N3330-W11300/15
1961
AMS 3351 II-SERIES V798

FEB 6 1969

4420

R