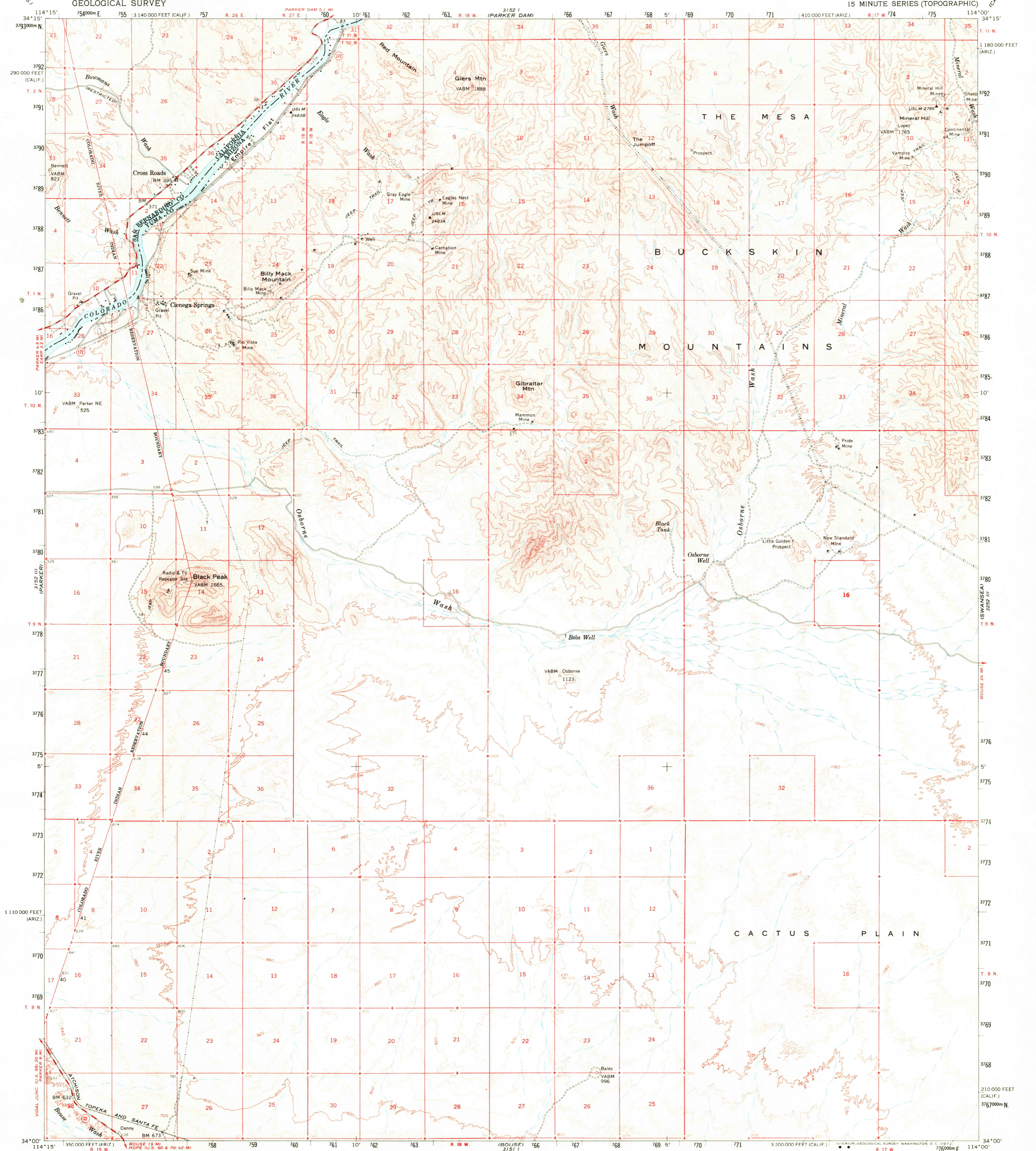


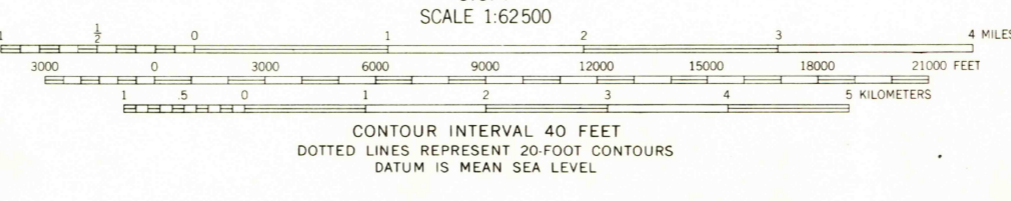
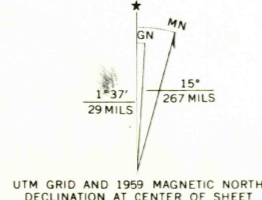
UNITED STATES
DEPARTMENT OF THE INTERIOR
GEOLOGICAL SURVEY

BLACK PEAK QUADRANGLE
ARIZONA-CALIFORNIA
15 MINUTE SERIES (TOPOGRAPHIC)



Mapped, edited, and published by the Geological Survey

Control by USGS and USC&GS
Topography from aerial photographs by photogrammetric methods
Aerial photographs taken 1955. Field check 1959
Polyconic projection. 1927 North American datum
10,000-foot grids based on Arizona coordinate system, west zone
and on California coordinate system, zone 5
1000-meter Universal Transverse Mercator grid ticks,
zone 11, shown in blue
Land lines surveyed in parts of T. 8 N., R. 17 W.,
and T. 9 N., Rs. 17 and 18 W.



CONTOUR INTERVAL 40 FEET
DOTTED LINES REPRESENT 20 FOOT CONTOURS
DATUM IS MEAN SEA LEVEL



ROAD CLASSIFICATION
Medium-duty — Light-duty
Unimproved dirt — State Route

USGS
HISTORICAL FILE
TOPOGRAPHIC DIVISION

JUL 17 1972
BLACK PEAK, ARIZ.-CALIF.
N3400-W11400/15
AMS 3152 II-SERIES V798

THIS MAP COMPLIES WITH NATIONAL MAP ACCURACY STANDARDS
FOR SALE BY U.S. GEOLOGICAL SURVEY, DENVER, COLORADO 80225 OR WASHINGTON, D.C. 20242
A FOLDER DESCRIBING TOPOGRAPHIC MAPS AND SYMBOLS IS AVAILABLE ON REQUEST