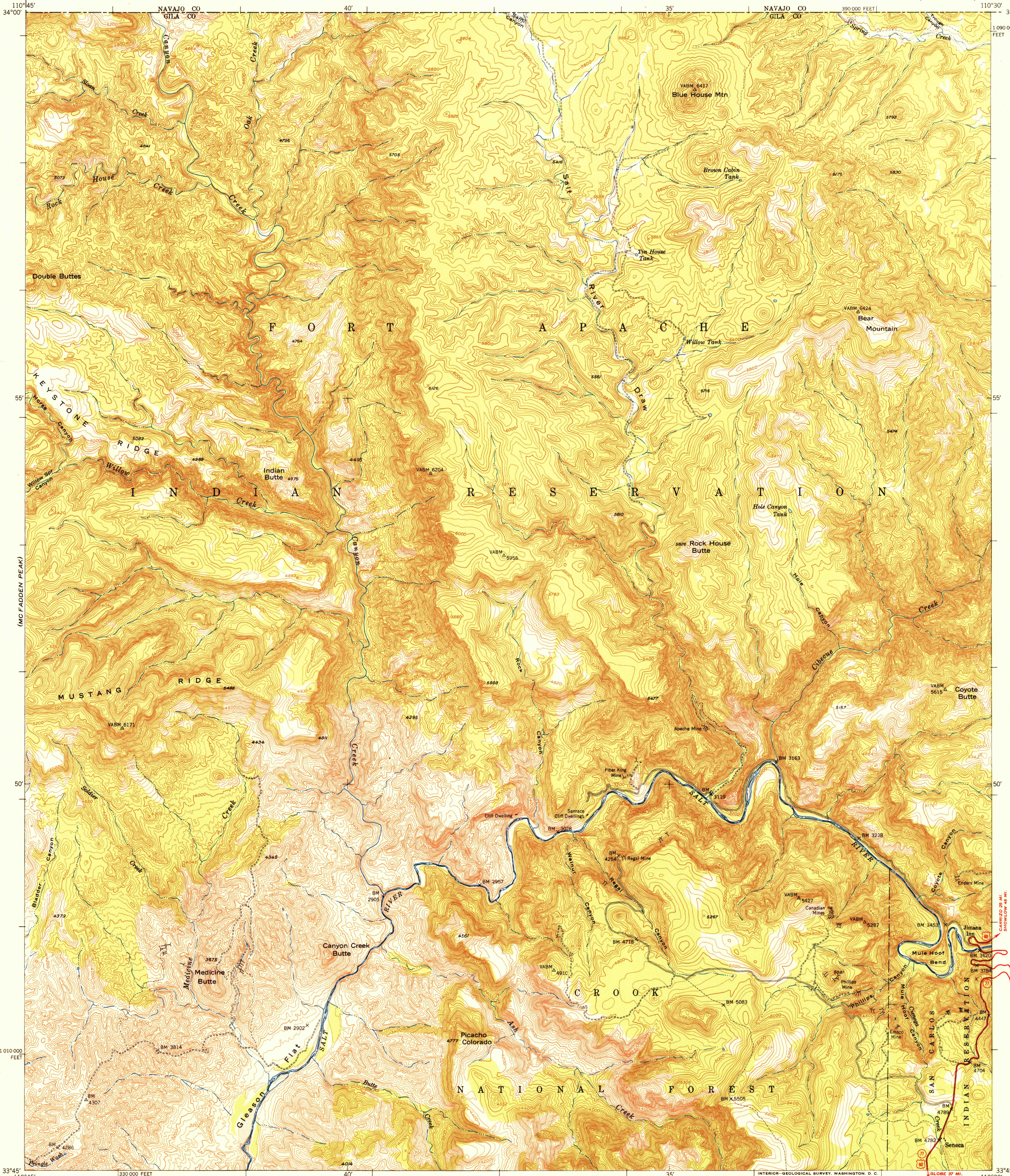


U.S.G.S. FILE COPY Inspection and Editing.

UNITED STATES DEPARTMENT OF THE INTERIOR GEOLOGICAL SURVEY

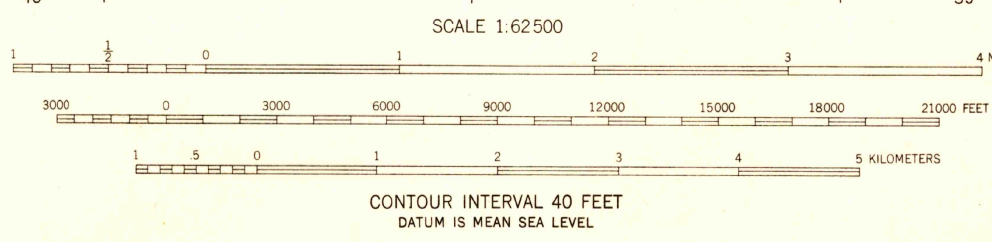
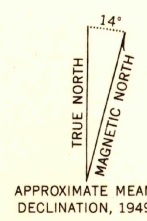
UNITED STATES DEPARTMENT OF THE ARMY CORPS OF ENGINEERS

BLUE HOUSE MTN. QUADRANGLE ARIZONA 15 MINUTE SERIES (TOPOGRAPHIC)



Map labels including: NAVAJO CO, GILA CO, KEYSSTONE RIDGE, INDIAN RESERVATION, MUSTANG RIDGE, CROOK NATIONAL FOREST, BLUE HOUSE Mtn, Indian Butte, Canyon Creek Butte, Medicine Butte, Picacho Colorado, and various creek names like Willow Creek and San Carlos River.

Mapped, edited, and published by the Geological Survey Control by USGS, USC&GS, and USFS Topography from aerial photographs by multiplex methods Aerial photographs taken 1946 Polyconic projection. 1927 North American datum 10,000-foot grid based on Arizona coordinate system, east zone Unchecked elevations are shown in brown



USGS Historical File Topographic Division

ROAD CLASSIFICATION HARD-SURFACE ALL WEATHER ROADS DRY WEATHER ROADS Heavy-duty 4-LANE LANE Improved dirt Medium-duty 4-LANE LANE Unimproved dirt Loose-surface, graded, or narrow hard-surface U.S. Route State Route

U.S.G.S. FILE COPY Inspection and Editing.

BLUE HOUSE MTN., ARIZ. N3345-W11030/15 EDITION OF 1951