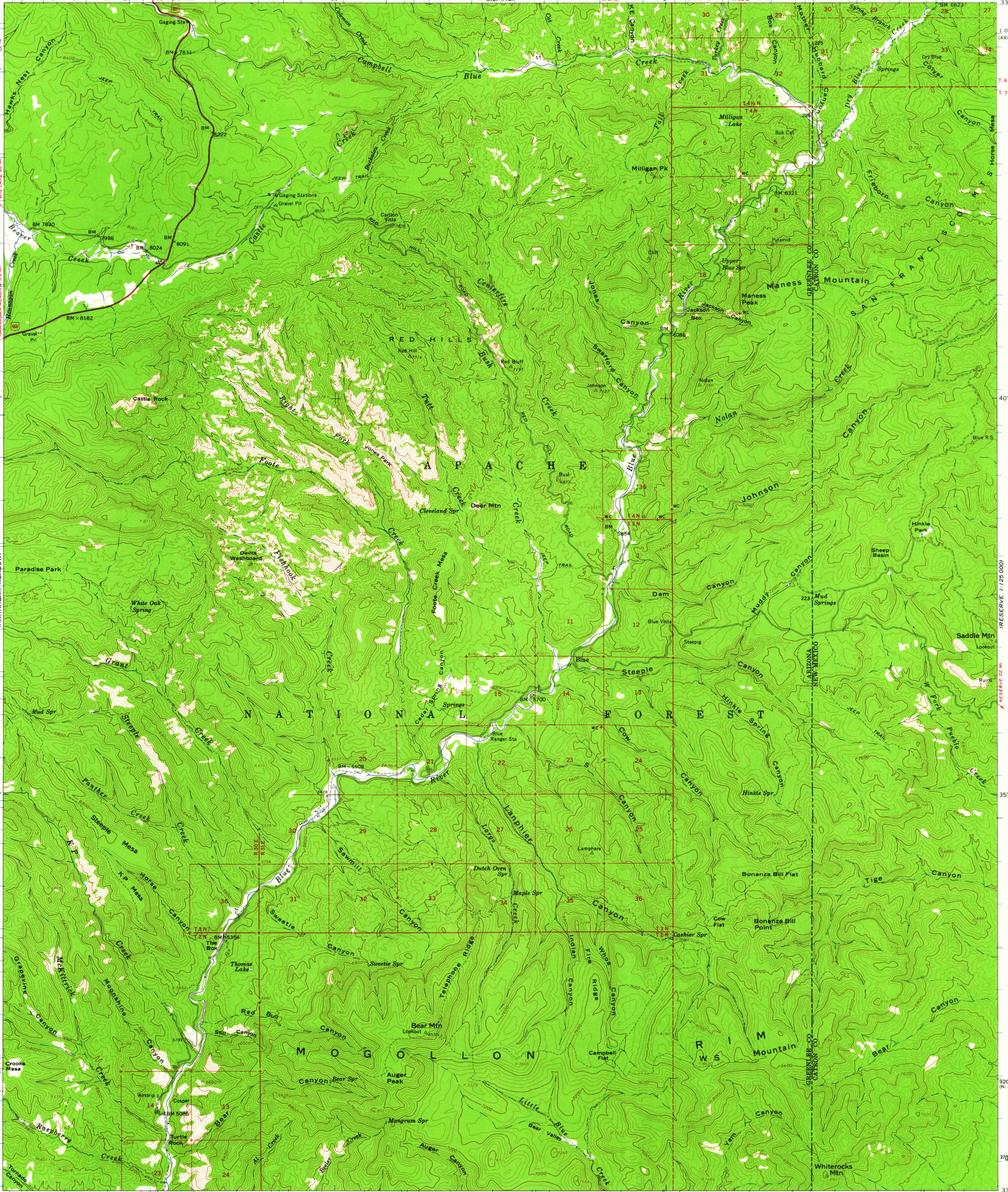


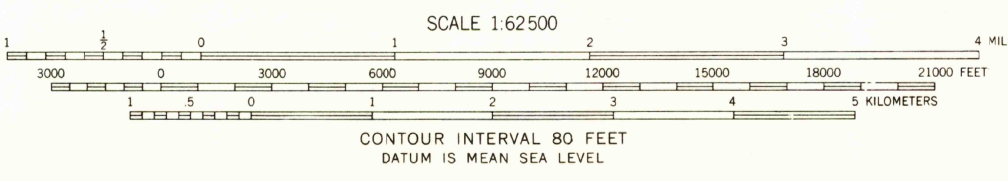
UNITED STATES
DEPARTMENT OF THE INTERIOR
GEOLOGICAL SURVEY

BLUE QUADRANGLE
ARIZONA-NEW MEXICO
15 MINUTE SERIES (TOPOGRAPHIC)



Maped by the U. S. Forest Service
Edited and published by the Geological Survey
Control by USGS, USC&GS, and U.S. Forest Service
Topography by photogrammetric methods from aerial photographs
taken 1950 and 1960. Field checked by USGS 1961
Polyconic projection. 1927 North American datum
10,000-foot grids based on Arizona coordinate system, east zone
and New Mexico coordinate system, west zone
1000-meter Universal Transverse Mercator grid ticks,
zone 12, shown in blue
Where omitted, land lines have not been established

TRUE NORTH
MAGNETIC NORTH
APPROXIMATE MEAN
DECLINATION, 1961



USGS
Historical File
Topographic Division



ROAD CLASSIFICATION
Heavy-duty — Light-duty
Unimproved dirt —
U. S. Route

BLUE, ARIZ.-N. MEX.
N3330-W10900/15
1961

THIS MAP COMPLIES WITH NATIONAL MAP ACCURACY STANDARDS
FOR SALE BY U. S. GEOLOGICAL SURVEY, DENVER 25, COLORADO OR WASHINGTON 25, D. C.
A FOLDER DESCRIBING TOPOGRAPHIC MAPS AND SYMBOLS IS AVAILABLE ON REQUEST

MAY - 2 1963
2755